

# Super Electric Grill M120 - Cast Iron Grill - M120 Top Version

Project .....  
Rev.: .....  
Zone: .....  
Location: .....



CODICE  
CR1772259

MODELLO  
Q70SG/E123P

SERIE  
QUEEN 7

## GENERAL CHARACTERISTICS

For those who do not want to give up the quality and solidity of a Queen stove, the Series 7 offers a 700 mm depth and more compact dimensions to fit any room, burners available in various configurations and wattages, enhanced by the refined Scotch Brite finish.

Thanks to its extreme compositional freedom, every composition is possible: you can combine Model i tops with accessorizable oven and neutral bases and hygienic finishes; create customized solutions by matching and attaching equipment back to back, sideways "flush" perfectly sealed, or "bridge" structures, offering high-level solutions that always perfectly meet the chef's needs. As a total guarantee, all equipment that make up a Queen7 kitchen are certified in compliance with international standards, including CE, GAR, AGA and others.



## TECHNICAL SPECIFICATIONS

Stainless steel outer shells and feet.  
Height of the work surface adjustable from 840 to 900 mm.  
Tops with a thickness of 2 mm.  
Aisi 304 steel burner controlled by safety valve and thermocouple.  
Piezo ignition.  
Adjustable temperature up to 350°C.  
Device for adjusting the height of the grids on two levels.  
Perimeter splash guard risers (h max=12mm).  
Canal with drainage hole and removable grease and residue collection.  
Internal drawer for collecting residual carbonaceous.

Larger, recessed grease trough on the worktop, easier to clean and more capacious

HUMIDIFIER accessory for optimal management of several types of cooking.

Grill height adjustment for handling different types of cooking

4 Grill types available: meat, fish, mixed stainless steel and reversible cast iron meat/fish version

Electric version with tilting heating elements to facilitate the cleaning process

# Super Electric Grill M120 - Cast Iron Grill - M120 Top Version

Project .....  
Rev.: .....  
Zone: .....  
Location: .....



CODICE  
CR1772259

MODELLO  
Q70SG/E123P

SERIE  
QUEEN 7

## Technical Information

SPECIFICATION	DATA
MATERIAL	CR1772259
DEFINITION	Q70SG/E123P GRIGLIA ELE. GHISA M120 TOP
COMMERCIAL LINE	QUEEN
SUPPLY	ELECTRICS
DIM. WIDTH	1 mm
DIM. PRODUCTIVITY	700 mm
DIM. HEIGHT	250 mm
NET WEIGHT	0.5 Kg
VOLUME (net)	0.21
PACKAGE LENGTH	1240 mm
PACKAGE WIDTH	850 mm
PACKAGING HEIGHT	570 mm
PACKAGE VOLUME	0,606 m3
GROSS PACKING WEIGHT	1 Kg
STANDARD POWER SUPPLY	380-415V 3N
FREQUENCY	50-60 Hz
ELECTRICAL POWER	15.6 kW
IP GRADE	IPX5
CERTIFIED MODEL	Q70SG/E123P

# Super Electric Grill M120 - Cast Iron Grill - M120 Top Version

Project .....  
 Rev.: .....  
 Zone: .....  
 Location: .....

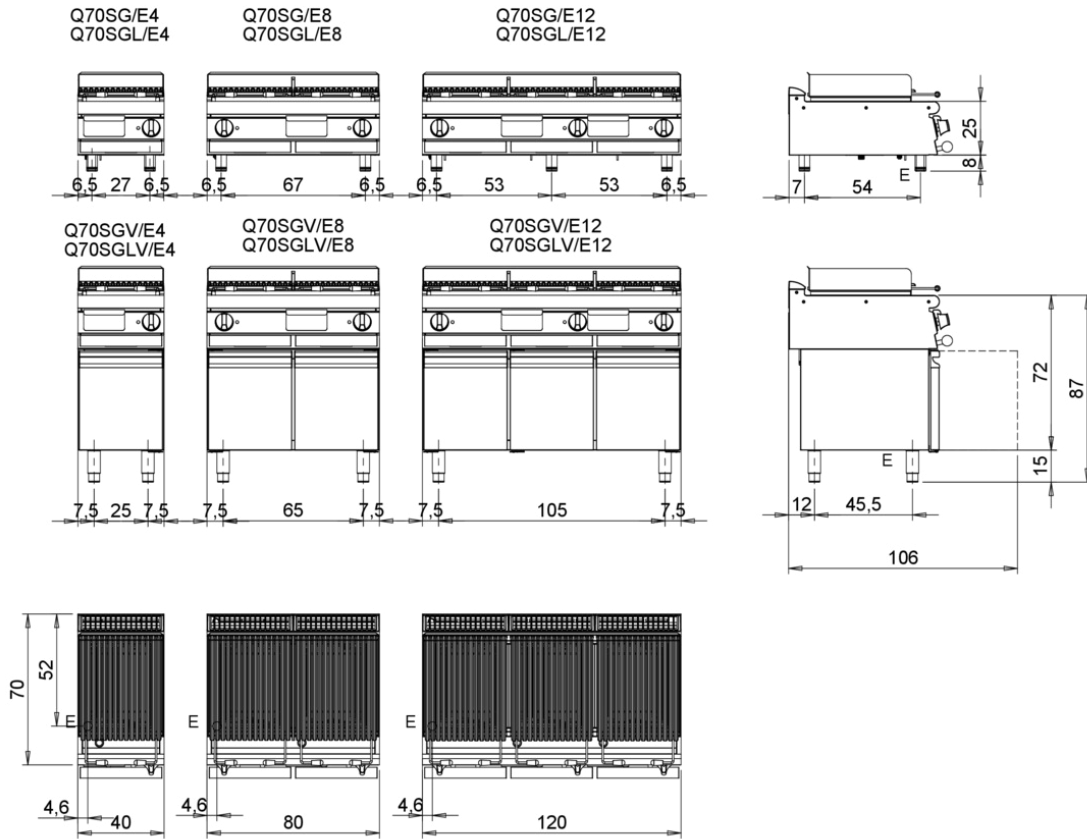


CODICE  
CR1772259

MODELLO  
Q70SG/E123P

SERIE  
QUEEN 7

MISURE IN cm - DIMENSIONS IN cm - ABMESSUNGEN IN cm - MESURES EN cm  
 MEDIDAS EN cm - MATEN IN cm - DIMENSIONES EN cm



## Legenda - Legende - Key - Légende - Leyenda - Legend - Legend

<b>E</b> Pressacavo entrata linea elettrica - Stopfbuchse - Electric cable stress relief - Presse étoupe de câble él - Pisacable - Elektrische kabelwartel - Entrada cabo eléctrico	<b>G</b> Arrivo gas - Gasanschluss - Gas connection - Arrivée gaz - Union de gas - Gasaansluiting - Ligação gás
<b>S</b> Attacco scarico acqua - Wasserablauf - Water outlet - Vidange de l'eau - Desaguadero - Wateraftapaansluiting - Junção descarga água	<b>H20</b> Arrivo acqua - Wasseranschluss - Water inlet - Arrivée eau - Union de água - Wateraansluiting - Junção alimentação água
<b>S1</b> Scarico vasca - Wannenabflusrohr - Pan outlet - Vidange du bac - Descarga cuba - Water toevoer - Descarga da cuba	<b>A1</b> = Calda - Heiss - Warm - Chaude - Caliente - Warm - Morno <b>A2</b> = Fredda - Kalt - Cold - Froid - Fria - Koude - Frio
<b>S2</b> Valvola di depressione - Anti-depression valve - Unterdruck ventil - Soupape de dépression - Válvula de depresión - Onderdrukkelep - Válvula de depressão	
<b>S3</b> Scarico acqua intercapedine - Wasserablauf Zwischenraum - Jacket water drain Evacuation eau double envelope - Descarga de agua intersticios - Afvoer water tussenruimte - Descarga de água na marmita com Sistema de aquecimento indirecto	
<b>S4</b> Scarico - Abflusrohr - Drain - Tuyau d'évacuation - Tubo de drenaje - Aftapbuis - Tubulação de dreno	<b>L</b> Rubinetto di livello - Level tap - Wasserhahn - Robinet de niveau - Grifo de nivel - Niveaakraan - Torneira de nível

# Super Electric Grill M120 - Cast Iron Grill - M120 Top Version

Project .....  
Rev.: .....  
Zone: .....  
Location: .....

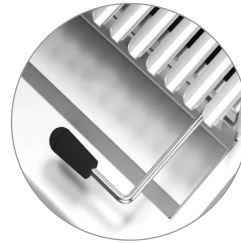


CODICE  
CR1772259

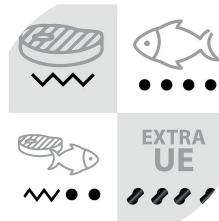
MODELLO  
Q70SG/E123P

SERIE  
QUEEN 7

## PRODUCT'S RANGE PLUS



4 Grill types available: meat, fish, mixed stainless steel and reversible cast iron meat/fish version



4 Types Grills available: meat, fish, mixed stainless steel and reversible cast iron meat/fish version



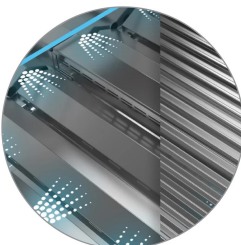
Smoker that can be installed on models M40-M80 - M120 for a barbecue flavour menu. Made of AISI304 stainless steel. Kit equipped with a guide for sliding the smoker box.



Exclusive stainless steel power-boosting system (PBS) that optimizes and channels the heat generated by the heating elements to the cooking zone.



HUMIDIFIER accessory for optimal management of several types of cooking.



Grill height adjustment for handling different types of cooking



Electric version with fold-down heating elements to facilitate the cleaning process.

# Super Electric Grill M120 - Cast Iron Grill - M120 Top Version

Project .....  
Rev.: .....  
Zone: .....  
Location: .....



CODICE  
CR1772259

MODELLO  
Q70SG/E123P

SERIE  
QUEEN 7

## ACCESSORIES

CODE	MODELLO	DESCRIZIONE
CR1658159	Q7AF	Q70 SUPER GRILL SMOKER KIT
CR1658179	Q72GG	Cast Iron Grid M40 Q7
CR1658189	Q72GTI	M40 Q7 Stainless Rod Grate
CR1658389	Q72GI	Stainless Grid M40 Q7
CR1658519	Q7KU12E	QUEEN 7 M120 ELECTRIC GRILL HUMIDIFIER KIT