

Electric Super Fry top M80 Soft Iron Plate - 1/2 rough - Top Version Thermost. control

Project:
Rev.:
Zone:
Location:



CODE
CR1654759

MODEL
Q90SFT/E820

SERIE
QUEEN 9

GENERAL FEATURES

In addition to offering the maximum choice of 2 mm thick solutions and plans and 90cm depths, this series is equipped with all the power, robustness and functionality you need to work efficiently.

External coatings and stainless steel feet Britite Scotch Finish.

Height of the adjustable work surface from 840 to 900mm.

Gamma modularity: 200-400-600-800-1200

Wide range of accessories.



TECHNICAL DETAILS

15 mm thick cooking plate totally independent of the top.

Large canal canopy along the entire perimeter of the plate for the collection of cooking residues, inclined towards the front for the decelusion of the liquids in the large drawer.

Large fat collection drawer.

Uniform cooking temperature on the whole plate. Optimizing the heat in the coach area and increasing the comfort of operators in the kitchen.

Plate not welded to the machine with optimization of the structural points subjected to thermal stress

Too full cap in stainlessness, equipped as standard for the management of the flooding of the canaline

Plate not welded to speed up maintenance interventions and any replacements in users

New version with identical useful surface of cooking and reduced energy power. An increase in yield per cm2 which allows a reduction in consumption up to 15% compared to traditional versions

Electric version: heating by means of armored resistances in incoloy. Thermostatically controlled cooking temperature and adjustable from 110 to 280 ° C. Safety thermostat.

Thermostat

M80

Top version

Electric Super Fry top M80 Soft Iron Plate - 1/2 rough - Top Version Thermost. control

CODE	MODEL	SERIE
CR1654759	Q90SFT/E820	QUEEN 9

TECHNICAL INFORMATION

SPECIFICATIONS	DATA
CODE	CR1654759
MODEL	Q90SFT/E820
COMMERCIAL LINE	QUEEN
SUPPLY	ELETTRICA
WIDTH	800 MM
DEPTH	900 MM
HEIGHT	250 MM
POWER SUPPLY VOLTAGE STANDARD	380-415V 3N
ELECTRIC POWER	15 KW
PLATE DIMENSIONS	705 X 490 MM

Electric Super Fry top M80 Soft Iron Plate - 1/2 rough - Top Version Thermost. control

CODE	MODEL	SERIE
CR1654759	Q90SFT/E820	QUEEN 9

ACCESSORIES

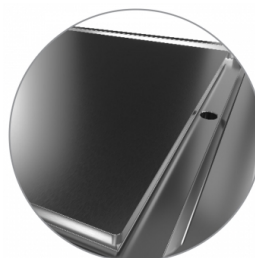
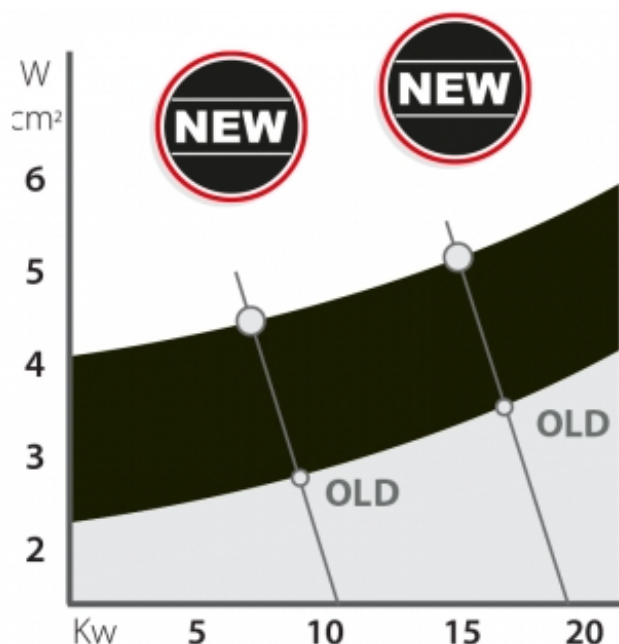
CODE	MODEL	DESCRIPTION
CR1354989	PRPC	RASCHIETTO PER PIASTRA CROMATA
CR1354999	PKLR	LAME PER RASCHIETTO (10 PCS)
CR1356399	RPR	Raschietto piastra rigata
CR1658629		
CR1658609	97TFT	Tappo per pulizia plancha
CR1658689		
9KSCFT	9KSCFT	Kit Scarico continuo
79KEA	79KEA	Kit Erogatore acqua

Electric Super Fry top M80 Soft Iron Plate - 1/2 rough - Top Version Thermost. control

CODE
CR1654759

MODEL
Q90SFT/E820

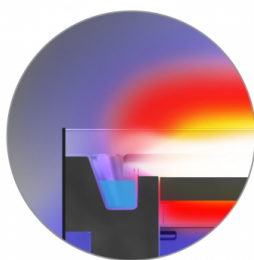
SERIE
QUEEN 9



Alarmable gully for the collection of cooking residues on the entire perimeter of the facilitated cleaning plate, and better maintenance of the humidity of the food in cooking



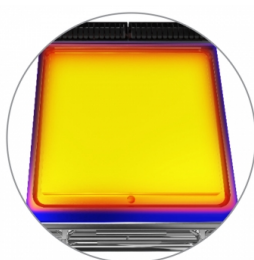
Large fatty drawer with capacity of the entire volume of the perimeter channel



Thermal cut that facilitates the user and adjacent machinery.



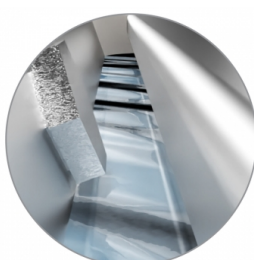
The design of the striped plate guarantees cleaning until the end of the plate



Uniform cooking temperature on the whole plate. Optimizing the heat in the cook area and increasing the comfort of operators in the kitchen.



Plate not welded to speed up maintenance interventions and any replacements in users



Available as an accessory the water supply kit

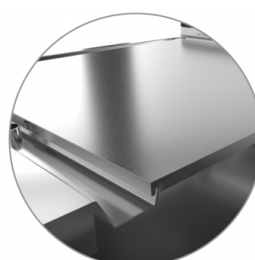


Plate not welded to the machine with optimization of the structural points subjected to thermal stress