



REFRIGERATED CABINET ROCKET TEMP

-2/+8°C - 24 X GN 2/1 - 2 DOORS

CODICE

BN20SM2IPO35

MODELLO

R140TNN

PRODUCT

REFRIGERATED CABINETS

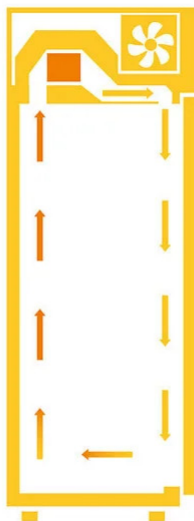


B

ENERGY CLASS

SERIE ROCKET

Indirect ventilation, supported by a full-height ducting system, ensures a uniform air flow on every level of the cabinet. This innovative solution enables even temperature distribution.



TECHNICAL SPECIFICATIONS

Rocket refrigerated cabinets designed for uniform temperatures and consistent performance. Ideal for those looking for an effective solution to maintain food freshness.

The 83 mm insulation with CFC-free polyurethane is designed to maximise energy yield, reducing consumption and maintaining a constant internal temperature.

Ventilated Refrigeration Technology

Uniform cold distribution ensures constant temperature maintenance

Indirect ventilation, supported by a full-height ducting system

The use of the R290 refrigerant gas, which complies with the latest environmental regulations, ensures a reduced environmental impact, promoting sustainability and respect for the ecosystem.

USB port for transferring recipes and HACCP records.

Up to 100 customisable recipes

Software updated via USB port.

Press-formed steel sides (not for double-chamber 35/35 models).

Internal equipment: 6 plastic coated GN 2/1 grids + 3 intermediate grids



REFRIGERATED CABINET ROCKET TEMP

-2/+8°C - 24 X GN 2/1 - 2 DOORS

CODICE
BN20SM2IPO35

MODELLO
R140TNN

PRODUCT
REFRIGERATED CABINETS

Technical Information

| SPECIFICATION | DATA |
|-------------------------|-------------------|
| MATERIAL | BN20SM2IPO35 |
| DIM. WIDTH | 1400 mm |
| DIM. PRODUCTIVITY | 830 mm |
| DIM. HEIGHT | 2080 mm |
| STANDARD POWER SUPPLY | 220-240 V ~ 50 Hz |
| ELECTRICAL POWER | 0.262 Kw |
| GAS/REFRIGERANT TYPE | R290 |
| REFRIGERATION POWER | -10/45 °C - 484 W |
| ENERGY CLASS | B |
| CLIMA CLASS | 5 |
| CELL SIZE | 542X710X1480 |
| CAPACITIES | 1298 l. |
| INSULATION THICKNESS | 83 mm |
| TEMPERATURE RANGE | -2 / +8°C |
| NUMBER OF PANS | 48 |
| GRILL PITCH | 55 mm |
| DEPTH WITH OPEN DOOR | 1472 mm |
| DOOR OPEN DIMENSION | 535x1480 mm |
| USEFUL INTERNAL DEPTH | 685 mm |
| MAX STORAGE T. | 60 °C |
| MIN STORAGE T. | -40 °C |
| MIN. OPERATING PRESSURE | 0,2 bar |
| MAX. OPERATING PRESSURE | 30 |



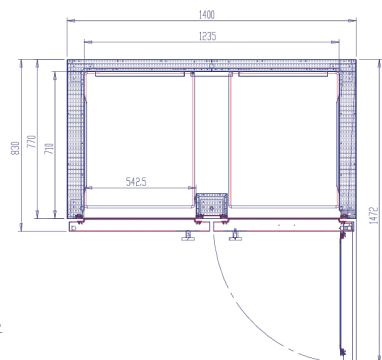
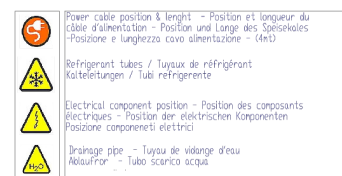
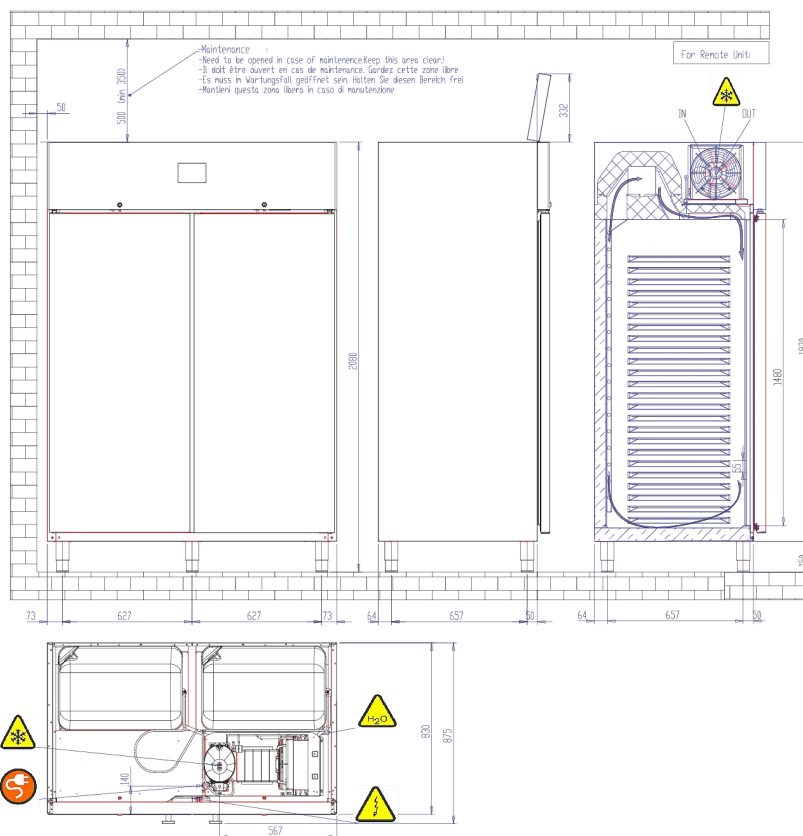
REFRIGERATED CABINET ROCKET TEMP

-2/+8°C - 24 X GN 2/1 - 2 DOORS

CODICE
BN20SM2IPO35

MODELLO
R140TNN

PRODUCT
REFRIGERATED CABINETS



GASTRONOM 2/1
Refrinators/ Kuchschranke/ Armadi refrigerati/
Armoires refrigerées/ Armarios refrigerados/Koelkasten/



REFRIGERATED CABINET ROCKET TEMP

-2/+8°C - 24 X GN 2/1 - 2 DOORS

CODICE

BN20SM2IPO35

MODELLO

R140TNN

PRODUCT

REFRIGERATED CABINETS

Product's PLUS



State-of-the-art refrigeration circuit, designed with an integrated front curtain that ensures even and effective distribution of cold inside the cold room. This advanced technology creates a homogeneous flow of air that envelops every corner of the refrigerated on open cabinet, maintaining constant temperatures and ensuring optimal product preservation, while minimising heat loss.



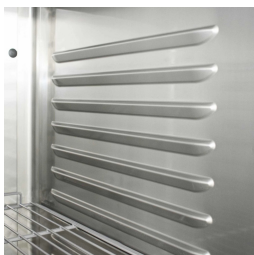
The refrigeration system with a monoblock outside the cell frees up internal space, optimising storage capacity and ensuring efficient use of every available inch.



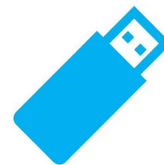
Innovative patented 7-chamber magnetic seals, combined with an increased door thickness of 65 mm, provide optimal thermal insulation. This advanced solution minimises temperature dispersion, ensuring maximum energy efficiency and consistent performance, even under intensive use.



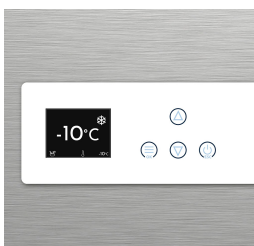
Thanks to the R290 gas supplied as standard for all available versions, Olis guarantees care and sustainability in all aspects of its product development.



Grid rails molded on the sides, ensuring easy cleanability.



The multifunctional USB port, supplied as standard, enables fast and secure management of operations, supporting firmware updates, import and export of parameters, recipes and languages. It also provides efficient downloading of HACCP data (including temperatures, alarms and events), ensuring traceability and full regulatory compliance.



Thanks to an innovative and user-friendly control system, temperature and operating parameters are easy to monitor and adjust.



REFRIGERATED CABINET ROCKET TEMP

-2/+8°C - 24 X GN 2/1 - 2 DOORS

CODICE
BN20SM2IPO35

MODELLO
R140TNN

PRODUCT
REFRIGERATED CABINETS

ACCESSORIES

| CODE | MODELLO | DESCRIZIONE |
|--------------|--------------------------|---|
| 1405011065 | MASTER BAC GN1/1 H60 MM | CONTAINER 325X530X60 MM |
| 1405011150 | MASTER BAC GN1/1 H150 MM | CONTAINER 325X530X150 MM |
| 14051200 | MASTER BAC 60X40 H70 MM | CONTAINER 400X600X70 MM |
| 1440065530 | GR PLAST GN2/1 | PLASTIC COATED GRID 530X650 MM GN2/1 |
| 1231190 | GUIDA CENTR. M 140 | RIGHT/LEFT GUIDE FOR CENTRAL Grids |
| BN1440165530 | GR INOX GN2/1 | STAINLESS GRID 530X650 MM GN2/1 |
| 219914 | RT | WHEEL KIT DIAM. 100, H127MM |
| KIT-IOT 4.0 | KIT-IOT 4.0 | CONNECTIVITY 4.0 SUPREME SUPPLEMENT KIT |