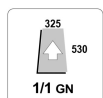


## SAE201B

COMBI FOR CATERING AND LARGE BUSINESSES - 20 X 1/1 GN - ELECTRIC WITH DIRECT STEAM - STEAM GENERATOR OPTIONAL • MANUAL ELECTRONIC CONTROLS - ASSISTED COOKING - EQUIPPED WITH N. 1 TROLLEY NKS201



3.5-inch (LCD - TFT) colour display for displaying your favourite programs, pre-set programs, variable fan speed, automatic washing, menus, and settings.

### Features



#### EFFICIENT

Energy monitor. VCS Vapor Cleaning System, new washing system. Reduction in detergent consumption up to 30% less.



#### STURDY

Long Life Component LLC. New long-lasting components. EMA Easy Maintenance Access to reduce service intervention times.



#### SMALL

Up to 15% less space by miniaturising the components (depending on model).



#### POWERFUL

Up to 20% more powerful. Pre-heating up to 320°C. Thanks to the new energy supply systems, Naboo 5.0 results in savings of up to 16% less compared to previous models.



#### ACCURATE

Stable and accurate temperature at all times thanks to the automatic consumption management. Autoclimate controls the ideal climate, thus guaranteeing excellent cooking quality at all times.



#### QUICK

Broccoli in just 7 minutes. 24 chickens in 30 minutes (Ref. mod.101)

Capacity

Capacity	20 x GN 1/1			
Distance between layers	<i>mm</i>	63	<i>inch</i>	2.5
Meals - Croissants	<i>n.</i>	150 / 300 - 180 / 300		
Max. total load	<i>kg</i>	90	<i>lbs</i>	198.5
Max. tray load	<i>kg</i>	25	<i>lbs</i>	55.1

Dimensions

Width	<i>mm</i>	892	<i>inch</i>	35.1
Depth	<i>mm</i>	862	<i>inch</i>	33.9
Height	<i>mm</i>	1812	<i>inch</i>	71.3
Maximum outer width	<i>mm</i>	892	<i>inch</i>	35.1
Max exterior depth	<i>mm</i>	966	<i>inch</i>	38.0
Maximum exterior height	<i>mm</i>	1856	<i>inch</i>	73.1
Packaging width	<i>mm</i>	1100	<i>inch</i>	43.3
Packing depth	<i>mm</i>	1110	<i>inch</i>	43.7
Packaging height	<i>mm</i>	2040	<i>inch</i>	80.3
Net weight	<i>kg</i>	273	<i>lbs</i>	602.0
Gross weight	<i>kg</i>	316	<i>lbs</i>	696.8
Generator net weight	<i>kg</i>	280	<i>lbs</i>	617.4
Generator gross weight	<i>kg</i>	320	<i>lbs</i>	705.6
Volume	<i>m3</i>	1.39	<i>ft3</i>	49.1
Packing volume	<i>m3</i>	2.49	<i>ft3</i>	87.9
Minimum installation distance - left side	<i>mm</i>	50	<i>inch</i>	2.0
Minimum installation distance - rear side	<i>mm</i>	50	<i>inch</i>	2.0
Minimum installation distance - right side	<i>mm</i>	500	<i>inch</i>	19.7
Cooking compartment width	<i>mm</i>	459	<i>inch</i>	18.1
Cooking compartment depth	<i>mm</i>	650	<i>inch</i>	25.6
Cooking chamber height	<i>mm</i>	1501	<i>inch</i>	59.1

Power supply

Power supply voltage	3N-AC 400 V			
Electrical absorption	<i>A</i>	58		
Frequency	<i>Hz</i>	50/60		
Total electric power	<i>kW</i>	37,2		
Differential switch	RCD cl. B			
Steam heating power (with steam generator)	<i>kW / kcal</i>	36 / -		

Water Connection

Cold water inlet	ø 3/4"		
Softened water inlet	ø 3/4"		
Min. pressure	bar 2		
Max. pressure	bar 5		
Minimum water flow	Lt 10		
Drainage slope	4°		
Discharge - ø	mm 50	inch	2.0

Water quality

Water hardness for steam generation connection	°dh / ppm	6° / 9° fH
pH value	Ph	> 7,5
Cl (chloride) - max	mg / l	30
Cl2 (free chlorine)	mg / l	0.1
Fe (iron)	mg / l	0.1
NH2Cl (monochloramine)	mg / l	0.2
Max. cold water temperature	°C	30 °F 86.00
Max. softened water temperature	°C	50 °F 122.00
Electrical conductivity	μS	50 - 200

Emissions

Latent heat	<i>W</i>	6696	
Sensitive heat	<i>W</i>	4464	
Max. liquid discharge temperature	<i>°C</i>	85	<i>°F</i> 185.00
Noisiness	<i>db</i>	< 50	

Special voltages and frequencies on request

TS-NAE201B-F60	3-AC 480 V - 60 Hz
TS-NAE201B-F50	3-AC 480 V - 50 Hz
TS-NAE201B-E60	3N-AC 440 V - 60 Hz
TS-NAE201B-E50	3N-AC 440 V - 50 Hz
TS-NAE201B-D60	3-AC 440 V - 60 Hz
TS-NAE201B-D50	3-AC 440 V - 50 Hz
TS-NAE201B-C60	3-AC 400 V - 60 Hz
TS-NAE201B-C50	3-AC 400 V - 50 Hz
TS-NAE201B-B60	3-AC 230 V - 60 Hz
TS-NAE201B-B50	3-AC 230 V - 50 Hz

## HOW TO USE

- Fast-Dry Boosted® - Automatic system for quick dehumidification of the cooking chamber.
- Rapid selection of favourite programs using scroll & push, with the dedicated scroller.
- Programmable with the ability to store 99 cooking programmes in automatic sequence (up to 9 cycles), assigning a name and dedicated icon.
- Automatic with 95 tested and stored cooking programmes, including programmes for reheating on the plate or in the pan.
- Autoclima® - System that automatically manages the perfect climate in the cooking chamber.
- Manual mode with three cooking modes and instant cooking start: convection from 30°C to 300°C, steam from 30°C to 130°C, combination convection + steam from 30°C to 300°C.

## CONTROL MECHANISMS

- Multipoint core probe with external connector, ø 3 mm.
- Intelligent Energy System - Based on the quantity and type of product, the oven optimises and controls the energy output, maintaining the best cooking temperature and avoiding fluctuations.
- Low consumption LED cooking chamber lighting. Optimal visibility in all points of the cooking chamber. Neutral light that doesn't alter the original colours of the product.
- EcoVapor - With the EcoVapor system, there is a net reduction in water and energy consumption due to the automatic controls of the steam saturation in the cooking chamber.
- Self-diagnosis before starting to use the equipment, with descriptive and audible signalling of any anomalies.
- SERVICE program: Testing the operation of the electronic board - Display of the temperature probes - Counter for operating hours of all primary functions for programmed maintenance.
- Pre-configured SN energy optimisation system (optional).
- Possibility of setting combi switch-off at the end of the automatic wash program.
- USB connection to download HACCP data, update software and load/download cooking programmes.
- Temperature control at the product core using probe with 4 detection points.
- Ability to choose up to 6 fan speeds; the first 3 speeds automatically trigger a reduction in heating power. For special cooking methods, you can use an intermittent speed.
- Easy access to programmable user parameters to customise the appliance through the user menu.
- Automatically regulated steam condensation.
- Auto reverse (automatic reverse of fan rotation) for perfect cooking uniformity.

## STRUCTURAL CHARACTERISTICS

- Long Life Component LLC - Use of new long-lasting components (Lainox internal approval procedure).
- Long Life Gasket - LLG. Automatic electromagnetic tracked frame hold and release system to preserve the seal of the stop gasket (patent pending).
- Solid state relay for power optimisation and modulation.
- Compact brushless magnetic drive motors.
- New oven drain with built-in air gap in accordance with standard EN61770.
- Two water inlets (soft and cold water).
- Front removable control panel for easy servicing.
- New push-in adaptable dove-tail joint seal for oven front panel made with heat and age resistant silicon rubber, easy to replace.
- Cooking chamber in 1 mm thick 18/10 AISI 304 stainless steel with long fully rounded edges for best air flow and easier cleaning.
- Deflector that can be opened for easy fan compartment cleaning.
- Adjustable hinge for optimal seal.
- Door with three locking points. Handle brake in open door position.
- Internal glass that folds to open for easy cleaning.
- Door with rear ventilated double tempered glass with air chamber and interior heat-reflecting glass for less heat radiation towards the operator and greater efficiency.
- Perfectly smooth, watertight chamber.

## OPERATION

- 3.5-inch (LCD - TFT) colour display for displaying your favourite programs, pre-set programs, fan, automatic washing, menus and settings.
- Possibility to view and modify the recipe at any time.
- User interface with a choice of 29 languages.
- Acoustic and visual signalling during the various stages of cooking, with a flashing light at the end of the cycle.
- Manual humidifier.
- Rapid cooling with possible injection of water into the cooking chamber.
- Automatic resumption of cooking in case of a power failure.
- Cool Down function for the rapid fan-cooling of the cooking chamber.
- Manual pre-heating.
- LED bars to signal that the temperature, timer and probe temperature are activated.
- SCROLLER knob with Scroll and Push function for confirming choices.
- LED HVS (High Visibility System) alphanumeric display to display the temperatures, Autoclima, time and core temperature.

## ELECTRICAL OPERATION

- Cooking chamber heating system with armoured heating elements in INCOLOY 800 stainless steel.

## STEAM GENERATION - DIRECT

- Direct cooking chamber steam generation system with water injection directly on the fan and nebulization on the heating elements. Advantage: immediate availability of steam in the cooking chamber.

**STEAM GENERATION - INDIRECT (WITH STEAM GENERATOR)**

- New high-performance fully insulated steam generator in AISI 304 stainless steel.
- CAL-OUT system to prevent scale build-up within the boiler, as standard.
- Boiler semi-automatic de-scaling program.
- Alarm in case of boiler de-scaling required.
- Daily automatic boiler draining and rinsing, temperature of drained water below 60°C.
- Automatic boiler pre-heating.
- Steam generator heating elements of armoured INCOLOY 800 type.

**SAFETY FEATURES**

- In case of a power failure during washing, hygiene is always guaranteed insofar as the washing cycle is automatically resumed.
- Maximum last tray shelf height 160 cm.
- Complies with national and international standards for safe operation in case of use without direct operator supervision - IEC 60335-1 / IEC 60335-2-42.
- Max 65°C external temperature on the door panel.
- Fan motor brake.
- Boiler probe to check boiler completely empty.
- Automatic electronic control of water level in the steam generator during filling and draining.
- Steam generator temperature limiter.
- Ventilated component cooling system with electronically controlled over-temperature display.
- Self-diagnosis with smart error viewing.
- Electronic control for lack of water alarm.
- Door open/closed electronic sensor.
- Fan motor thermic protection.
- Cooking compartment safety device for pressure built-up and depression.
- Cooking chamber temperature limiter.

**CLEANING AND MAINTENANCE**

- CALOUT descaling system that prevents the formation and accumulation of limescale in the steam generator (for model with steam generator). Separate container and automatic dispensing (CalFree Boosted liquid descaler). Supplied with 1 liquid descaler tank - 990 gr.
- VCS - Vapor Cleaning System. New automatic washing system with vaporisation of the detergent in the cooking chamber. Allows a significant reduction in detergent consumption up to 30%. Separate container and automatic dispensing (CombiClean Boosted liquid cleanser). Supplied with CombiBlue, alkaline sanitising detergent for starting professional ovens (990 gr).
- Easy external cleaning thanks to perfectly smooth surfaces in stainless steel and glass and IPX5 protection against water splashes.
- "Fast" ultra-fast washing in 10'. Minimum interruptions to the work cycle and consistently optimal cleaning.
- 7 automatic washing programmes without the need for operator input after start-up: Manual - Rinse - Fast - Soft - Medium Eco - Hard Eco - Grill.
- WMS - Wash Management System. System allowing washing programmes to be planned based on combi use.
- Manual cleaning system with retractable hand-held shower.

**INSTALLATION AND ENVIRONMENT**

- It is recommended to have periodic maintenance carried out by a LAINOX Service Center in accordance with the manufacturer's recommendations and as stated in the maintenance manual and warranty.
- Operation without adding the water softener and descaler (model with steam generator).
- It is recommended to have the equipment installed by LAINOX accredited Service Centers.
- Quality ISO 9001 / Safety ISO 45001 / Environmental ISO 14001 certification.
- Product recycling rate: 90%.
- LCP - Life cycle perspective: CO2 consumption - 380 Kg CO2 eq/year. The calculation was performed taking mod. \_E101B (model with steam generator), taking into account a hypothetical restaurant use and considering 8 hours a day for 3.5 days a week, forty-eight day per year.
- 100% recyclable packaging.

**STANDARD EQUIPMENT**

- 6 speed fan
- USB connection
- Multipoint core probe ø 3 mm. With external connector
- Built-in and retractable hand shower with tap
- CALOUT descaling system for models with boiler. Supplied with anti-scale product
- Trolley NKS201
- Automatic cleaning system

**OPTIONAL TO BE REQUESTED WHEN ORDERING**

**OB201E:** Steam generator. For electric model

**SSB201S:** Extra charge for trolley NKS201S - 15 x 1/1 GN - ₤ 83

**SSB154:** Extra charge for trolley NKS154 - 15 x EN1 (600 x 400) - ₤ 89

**SN:** Extra charge for energy saving system connection. Electric models only

**MK201B:** Marine version kit - Extraction hood and configuration for connection, cannot be installed

**LLG:** Long Life Gasket - Automatic tracked frame hold and release

**KPG201:** Chicken grill kit professional

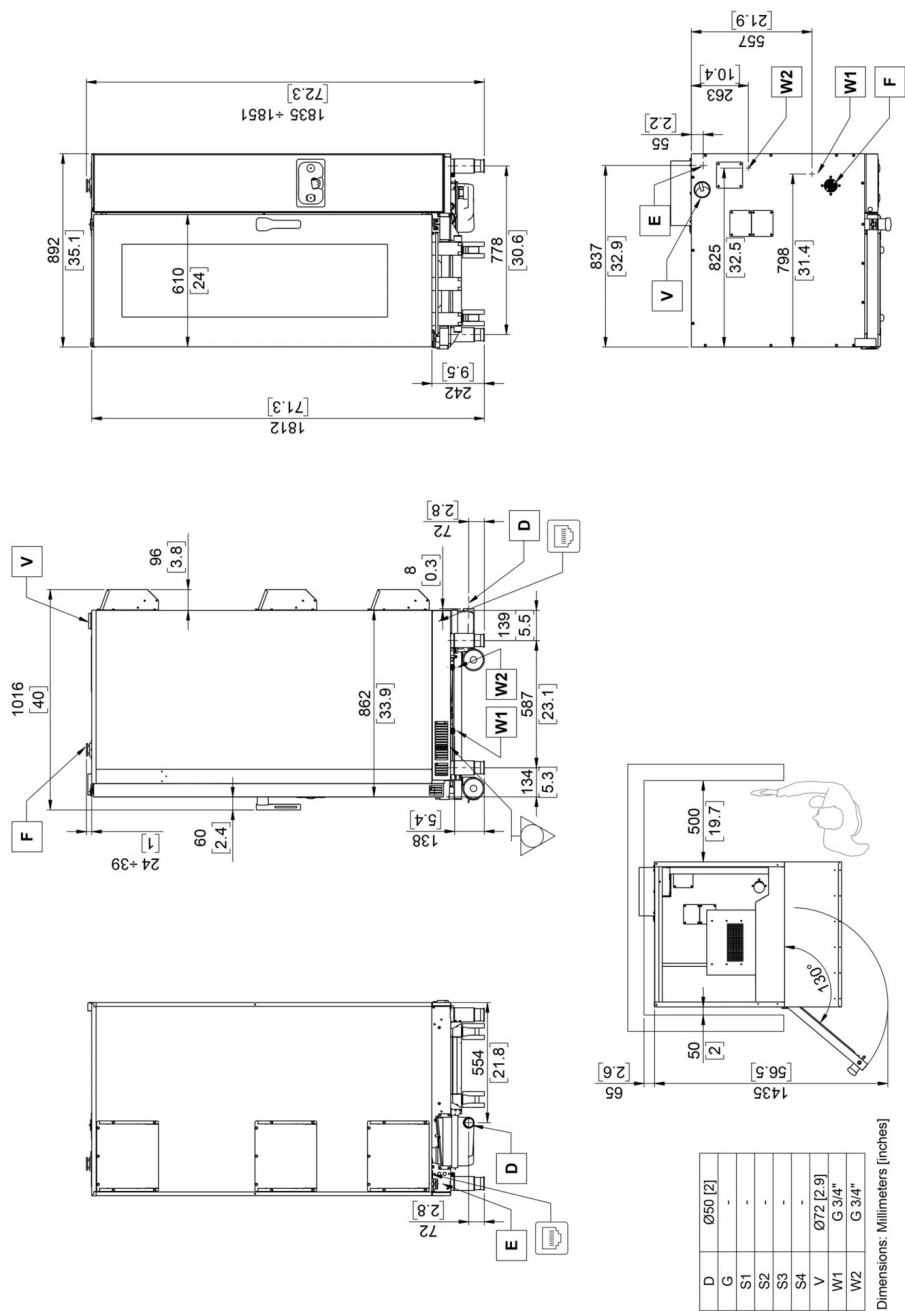
**DSP:** Display-control panel protection

**BPK:** Configuration for connection to extraction hood

**OB201E-SF:** Steam generator. For electric model

**SNCP:** Extra charge for energy saving system connection. Electric models only. Exclusive for Power Garden system

**SSB564P:** Extra charge for trolley NKS564P - 5 x EN1 (600 x 400) - ₤ 250



A	Technical compartment cooling air intake	D	Liquid discharge	E	Electric power supply cable inlet	F	Cooling chamber air intake
G	Gas inlet	S1	Cooling chamber fumes exhaust	S2	Cooling chamber fumes exhaust	S3*	Steam generator fumes exhaust
S4*	Steam generator fumes exhaust	V	Steam vent and cooking chamber pressure drop safety device	W1	Water inlet	W2	Softened water inlet
	Equipotential connection		Ethernet connection				

The data reported in this document is to be considered non-binding. The company reserves the right to make changes at any time, without prior notice

