



## Sunsets over Palm Park - 5/152 RAILWAY STREET COTTESLOE

[www.shellabears.com.au](http://www.shellabears.com.au)

Shellabears

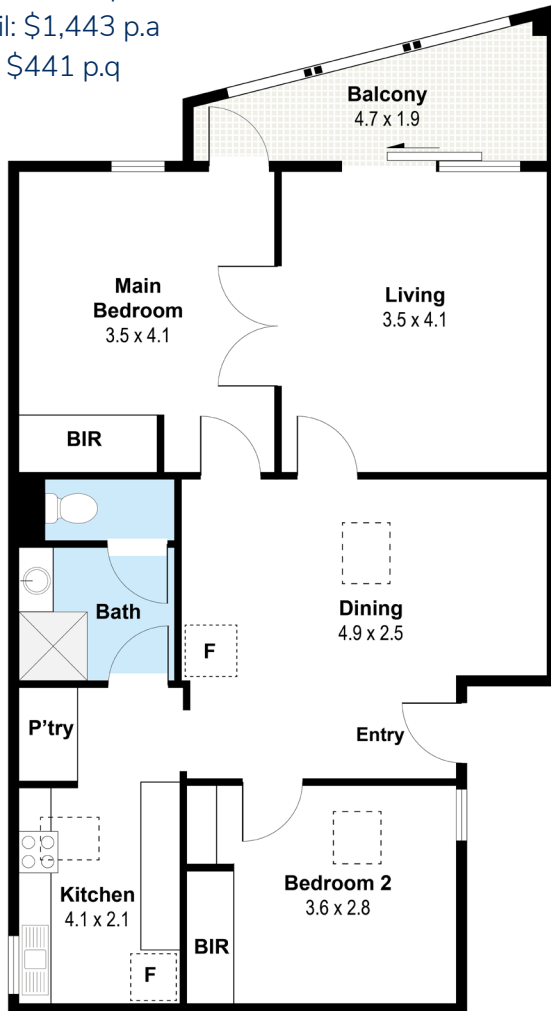
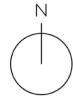


## Rates (approx):

Water: \$1,032 p.a

Council: \$1,443 p.a

Strata: \$441 p.q



## Features:

- Large apartment in small complex
- Architect designed
- Option for two or three bedrooms
- Generous living areas
- Be part of the future of the 'village'
- Wonderful amenities
- Invest or reside in your own pied-à-terre
- Northern aspect over park
- All amenities at your doorstep



**Chris Shellabear**  
0418 910 065



## Scan to take a tour!

Simply open the camera on your phone, hold it over the QR code to scan and click the URL to view the tour!