

29th Te Wānanga o Aotearoa Waka Ama Sprint Nationals

15th – 20th January 2018 - Lake Karāpiro, Cambridge

HAPPY NEW YEAR! – Kohitātea – Pānui 3

POWHIRI – MONDAY 16TH JANUARY

The Pōwhiri will take place at 8:30am Monday 15th January - Manuhiri to assemble in the car park at the Don Rowlands Centre at 8.00am.

We would like to encourage as many paddlers and supporters to attend the Pōwhiri. Everyone is welcome. There will be cup of tea/coffee and refreshments available in the Don Rowlands centre after the Pōwhiri.

MANAGERS MEETINGS

All Mangers meetings will be held in at the Don Rowlands Centre.

When	Relevant to:	Where
Sunday 14 th January	Midget racing Monday	4:00pm Don Rowlands Center
Monday 15 th January	All other Junior grades	5:30pm Don Rowlands Center
Wednesday 17 th January	W1 Racing	6:00pm Don Rowlands Center
Thursday 18 th January	J19 and Senior W6/W12 racing	6:00pm Don Rowlands Center

CLUB TROPHIES



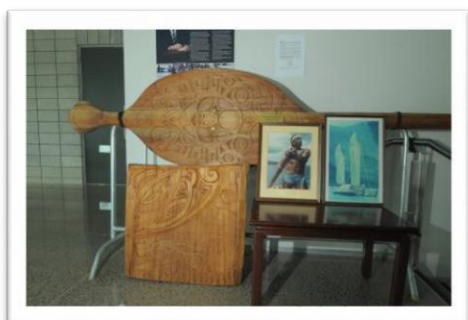
In 2011 Nga Kaihoe o Aotearoa awarded 2 new trophies. These trophies are perpetual trophies that will be awarded at future nationals and enjoyed by Generations of Waka Amapaddlers.

The Trophies were carved by Matahi Whakataka-Brightwell who has been instrumental in the re-birth and growth of the sport of Waka Ama in Aotearoa.

The first is a trophy that recognises clubs paddling excellence and achievement throughout the week. Points will be accumulated throughout the week from all finals and the club with the most points at the end of the week will be awarded this honour.

This trophy was last year awarded to **Horouta Waka Hoe** who topped the club points with 369.5 . [Click here to see full club list of points](#)





The second trophy was carved and named in honour of Ace Cuthers who we sadly lost in 2010. It is the **“Ace Cuthers Memorial Club Spirit Award”**. It will be chosen by the Volunteers and Officials at the event. They will take into consideration actions of the club throughout the week, their performance on and off the water. The club that optimises the values of Waka Ama; Manaakitanga, Whanaungatanga, Hauora, Tu Tangata.

The winning club in 2017 was **Te Pou Herenga Waka Ama Club**.

Both trophies will be on display all week in the Don Rowlands centre and will be awarded at the final medal presentation on Saturday 21st January.

VENUE MAPS AND TENT ALLOCATION

Tent allocation sites have been marked for each region (as per below). **Regional coordinators** are to ensure that tents for their region stay within the designated area and are erected in such a way that maximises space for everyone. Please make sure you are mindful of all the clubs from your region and make space for everyone.

(End closest to the tower)

TPOTI 60m	TUOTR 34m	TWOA 4m	HTPWAA 23m	AROCA 58m	TTPCA 21m
--------------	--------------	------------	---------------	--------------	--------------

Here is the historic regional tent allocations for the past 8 years.

2018	TPOTI	TUOTR	TWOA	HTPWAA	AROCA	TTPCA
2017	TPOTI	TTPCA	TUOTR	TWOA	HTPWAA	AROCA
2016	TPOTI	AROCA	TTPCA	TUOTR	TWOA	HTPWAA
2015	TPOTI	HTPWAA	AROCA	TTPCA	TUOTR	TWOA
2014	TPOTI	TWOA	HTPWAA	AROCA	TTPCA	TUOTR
2013	TPOTI	TUOTR	TWOA	HTPWAA	AROCA	TTPCA
2012	TPOTI	TTPCA	TUOTR	TWOA	HTPWAA	AROCA
2011	TPOTI	AROCA	TTPCA	TUOTR	TWOA	HTPWAA

ID CARDS

Pre-ordered ID cards can be picked up from Admin inside the Don Rowlands Centre by the designated Club Co-ordinator. Any replacements ordered after 8th January or at Nationals will cost \$15 each

FEES AND PAYMENT

All club fees and outstanding accounts must be paid by End of Monday 15th January. All queries to the admin office which will be open onsite on From Sunday 15th January @ 2:00pm

Fees include Nationals Entry Fees and Club Affiliation fees.

No Cheques will be accepted.



PARKING

Large vehicles will be permitted to drop off passengers and gear each morning up until 7:30am (7:00am Friday & Saturday). There will be no parking within the race venue from 7:30am onwards (7:00am Friday & Saturday); all vehicles will be required to park in the top field gate 3 entrance at a cost of \$5 per vehicle.

Day passes will be issued if you wish to leave and return at no extra cost.

DISABLED PARKING

Disabled Parking is through gate 3, the parking is located in the drop off zone and passes must be displayed at all times.

PARKING – WEEK PASSES

Week Parking passes are available for \$20. Week passes must be displayed on the vehicles dashboard for clear viewing and must include the vehicle registration number.

Week passes will be available for purchase from the admin desk at the Don Rowlands Centre and online at the Waka Ama On-Line Shop <https://shop.wakaama.co.nz/shop> until Sunday 14th at 5:00pm

After 5pm on Sunday you will need to purchase directly from the Admin on Monday.

(Week passes will not be available for purchase at the gate or after Monday).

Any online purchases need to be collected from the Admin office inside the Don Rowlands Centre.

WAKA USE

As W6 waka are kindly loaned by clubs and Te Wānanga o Aotearoa, Waka Ama NZ will fine anyone who stands up in W6/W12. The fine is \$100 per individual, per infringement. No exceptions. The cost of the fine will be charged to the club concerned. Respect and care for all waka, paddlers, volunteers, and officials is paramount to the sport.

Any team causing damage to any W6/W12 waka at any time during the event will incur the cost of the repairs, which will be charged to the team's club.

All contracted W6 waka are used solely for competition. No contracted waka may be taken or used for training purposes while contracted to the event; this non-permitted use will incur a fine to the offenders' club of \$200 per incident.

W1

A reminder to all W1 competitors:

- There is no restriction to the amount or type of W1 that can be used for this event.
- W1 must be weighed and checked-in on Wednesday 20th between 3pm and 7pm.
- **Hull, Ama and Kiato will be weighed and must weigh a minimum of 16kgs**
- Space will again be marked out for each region.
- Each Region must appoint a Regional W1 Co-ordinator
- Regional coordinators are expected to monitor this space and ensure access-ways are not blocked.
- Paddlers are responsible for storing W1 in allocated spaces without causing damage to any other waka.
- Your W1 is your responsibility.
- Every year paddlers find it necessary to "borrow" bungs from waka without returning them. Please don't!
- Bring your own bungs for your waka and look after them.
- A limited supply of number holders will be onsite and can be purchased from the Admin building for \$5 each. Please bring your own Duct tape.

Number Holders can be ordered online via the <https://shop.wakaama.co.nz/shop> and picked up at Admin at the lake

EVENT SCHEDULE

13th & 14th Saturday/ Sunday	<p>All W6 Waka to be delivered to site and rigged Regional Tents cannot be put up until Friday 13th January Admin will be open from 2pm Sunday 14th</p> <p>Managers Meeting for Midget teams 4:00pm Sunday 14th</p>	
15th Monday DAY 1	<p>Powhiri</p> <p>Midgets Start Racing</p> <p>Managers Meeting (All clubs)</p>	<p>8:30am assemble at 8:00am</p> <p>First Call 10:30am First Race 11:00am 5:30pm - Don Rowlands Centre</p>
16th Tuesday DAY 2	<p>W6 & W12 races</p> <p>Medal presentation at the conclusion of racing</p>	<p>All Midget, Int, J16 7:30am Karakia followed 8:00am First Race call 8:30am First Race Start</p>
17th Wednesday DAY 3	<p>W6 races</p> <p>W1 weigh-in and storage</p> <p>Medal presentation at the conclusion of racing</p> <p>Nga Kaihoe o Aotearoa (Waka Ama NZ) AGM</p>	<p>Midget, Int, J16 7:30am Karakia followed 8:00am First Race call 8:30am First Race Start</p> <p>Between 3pm and 7pm</p> <p>7.30pm Don Rowlands Centre</p>
18th Thursday DAY 4	<p>W1 races</p> <p>Medal presentation at the conclusion of racing</p>	<p>All Age Groups 7:00am Karakia followed 7:30am First Race call 8:00am First Race Start</p>
19th Friday DAY 5	<p>W6 & W12 races</p> <p>Medal presentation at the conclusion of racing</p> <p>Te Wānanga o Aotearoa Corporate Race</p>	<p>J19 and older 7:00am Karakia followed by First Race call 7:30am First Race Start</p> <p>12:00 noon</p>
20th Saturday DAY 6	<p>W6 races</p> <p>Medal presentation at the conclusion of racing</p> <p>Freedom Collective After Party!</p>	<p>7:00am Karakia followed by First Race call 7:30am First Race Start</p> <p>4:00pm (estimated conclusion of racing)</p> <p>Onsite at the Don Rowlands Centre – 8:00pm till 12:30am</p>

EVENT PENALTIES

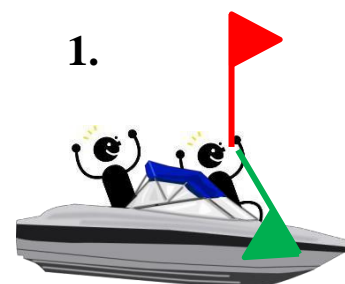
Non-permitted use of waka	\$200 per incident
Damage to W6 /W12	\$cost of repairs
Team additions after 14 th Dec	\$50 (per team)
Team withdrawals after 8 th Jan	Full race fees plus \$50 (per team)
ID Card orders after 8 th Jan	\$15 (Orders by 5th Jan = \$5)
New Paddler registration after 8 th Jan	\$50 (per paddler)
W1 Midget supporter infringement	\$100 per incident
Protests (per incident)	\$100 (refunded if protest upheld)
Appeals (per incident)	\$200 (refunded if protest upheld)

START RULE EXPLANATION

Every race will approach the false start line and start line the same.

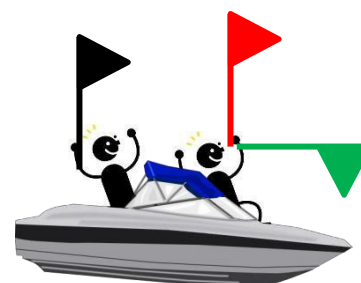
- ♦ Just as normal the **WHITE FLAG** will be used to signal to the Waka they are aligned and to proceed to the false start line.

1. As per normal once all the Waka are aligned on the false start line the **RED FLAG** will be raised to proceed to the start line.

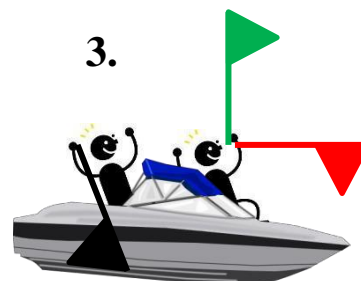


2. If during this time at least the bow of **one** canoe is over the start line – the **BLACK FLAG** will be raised.

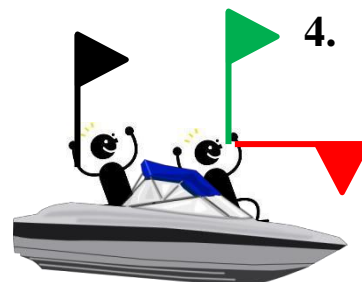
(This allows for canoes to correct themselves if they find they are over the start line.)



3. If the canoes are corrected the **BLACK FLAG** will be lowered and the **GREEN FLAG** will start the race.



4. If after a reasonable amount of time the canoes have not been corrected the **BLACK FLAG** will remain raised and the **GREEN FLAG** will then start the race.



This makes it clear:

- If the **BLACK FLAG** is **lowered** when the **GREEN FLAG** is raised – *No teams will be disqualified for START LINE FAULTS*
- If the **BLACK FLAG** is raised and then **remains risen** as the race starts – *There will be at least one team disqualified for a START FAULT.*

HALF LANES

This year we will be introducing half lanes for all straight races (500m and 250m). This is in keeping with standard practice at World Sprint Championships and will allow further growth in the numbers of competitors at nationals.

It will also allow more teams to progress beyond heats and into Semi finals and Finals. Giving more paddlers more racing.

We are currently in the process of updating our buoys and lanes at Lake Karapiro, to implement this change. A course map will be provided in Panui 4.

Please contact admin@wakaama.co.nz if you have any questions.

RACE RULES

Please ensure you are familiar with the race rules. The updated race rules can be found here <http://www.wakaama.co.nz/pages/read/1003423>

A copy of all amendments made can be viewed here: <http://www.wakaama.co.nz/stories/read/1004686>

VOLUNTEERS

We have a dedicated team of volunteers for the entire week. We are very grateful for all those who have offered their time to volunteer during the week, thank-you.

We would request all regions to assist at the end of each day to remove the Waka from the water. Many hands make for light work and an announcement will be made calling for your assistance each day.



2018 WAKA AMA AFTER PARTY!

Will be held onsite at the Don Rowlands Centre on Saturday 20th January from 8:00pm until midnight, spot prizes and More!

Don't miss this year's Waka Ama Nationals Social Celebration!!! Featuring Annie Crummer, Che Fu, Jason Kerrison & Betty-Anne Monga!

Tickets are \$25 if you buy them online here: <https://shop.wakaama.co.nz/shop> or at the Admin Office during the week of Nationals, there is the option to purchase the tickets online from the admin desk for debit and credit card holders. There limited tickets so don't leave it till the last minute and miss out!



VENDORS

We have a total of 34 vendors and promoters who are going to be onsite, a full list of vendors is available on the website The list of vendors can be found here: <https://shop.wakaama.co.nz/racecalendar/lookup/1105>

HEALTHY KAI

This year we are again sticking with the kaupapa to be a healthier event. There will be no Fizzy drinks or Deep Fried food available for purchase onsite.

MERCHANDISE



T-Shirts will be on sale from **Tuesday 17th January from 10:30am.** We have limited supply so get in quickly!!!

Paddler Shirts Available In various colours



CAMPSITE RULES

**For those staying in the campsite:
Campers at Mighty River Domain, Lake Karapiro.
Temporary Liquor Ban**

There is a liquor ban on the following days:

- 15th -21st January 2018

There is an exception for those staying in the campground whereby you may consume alcohol between the hours of
5.00pm – 9.00pm.

ATM

There will be 2 ATM Machines inside the Don Rowlands Centre

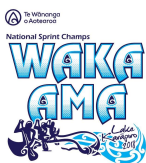
CLUB/REGIONAL COORDINATORS

Not all Regions or Clubs have registered their co-ordinators for this event. To ensure that urgent messages, correction of entries or any other issue is dealt with urgently it is important that National Event Organisers can communicate to Regions and Clubs. This will also prevent delays and/or disappointments. Send details of Club or Region, Coordinators Name, email address and cell number to admin@wakaama.co.nz , subject heading COORDINATOR

Each Club should have a designated co-ordinator. We are happy if you wish to have 2 co-ordinators. Some clubs are so big they need more than one person. We will issue you with a club co-ordinators pass. These individuals will be given an identification pass.

Finally: We will be onsite at the Lake setting up from Friday 12th January. So please do not expect prompt responses to emails. For matters of an urgent nature please call, Lara on 0275484612. Otherwise the Admin desk will be open at the lake from 2:00pm- 7:30pm on Sunday 14th January

Look forward to seeing you all at the Lake, please drive safely.



National Sprint Champs

