

WAIKATO AWA RACE



NAU MAI HAERE MAI

Nga Tai Whakarongo is looking forward to seeing you and your crew paddling on the mighty Waikato Awa in Kirikiriroa, Hamilton

Saturday 8 September 2018

Roose Commerce Park, Grantham Street, Hamilton

RACE SCHEDULE

07.00am – Waka arrive for rigging

08.00am – Opening karakia

20km Race – W1, W2, W6

08.15am – Safety Checks

08.30am – Race Briefing

09.00am – W1, W2 start

09.15am – W6 start

LUNCH

6km Race – W1, W2, W6

11.00am – Safety Checks

11.30am – Race Briefing

12.00pm – W1, W2 start

12.15pm – W6 start

13.30pm - Prizegiving followed by closing karakia

Please note times are subject to change



RACE FEES

Juniors

\$10 per paddler or \$15 for both races

Adults

\$15 per paddler or \$20 for both races

PAYMENT OF RACE FEES

Account Name: Nga Tai Whakarongo

Account Number: 38-9019-0351207-00

Particulars: [Club name]

Code: [Race]

Reference: [Race crew name]





SAFETY INFORMATION

Each waka is required to complete a safety check and comply with the race expectations.



W1	W2	W6	ITEMS
1	2	6	Lifejacket/pdf
1	1	2	Bailers
1	1	1	Spare paddle
-	-	1	25m tow rope tied to taumanu
1	1	1	Communication device (waterproof case)
			Optional: spare lashing

If paddlers cannot swim 50 metres, they **MUST** wear a lifejacket when racing.
All paddlers 16 years or younger **MUST** wear a lifejacket when racing.

With exceptions of the above, lifejackets must be accessible during the race, unless otherwise advised at the race briefing. Race Director may advise paddlers to wear lifejackets when racing due to weather or safety concerns.

EVENT WAIVER

Each paddler entering the race must fill in the event waiver form.
The waiver **MUST BE SIGNED BY EACH CREW MEMBER.**

RACE BRIEFING

All steerers and W1/W2 paddlers must attend the race briefing for their race. Please note, important instructions and safety considerations will be highlight at the briefing. Non-attendance means that a paddler/team will not be allowed to race.

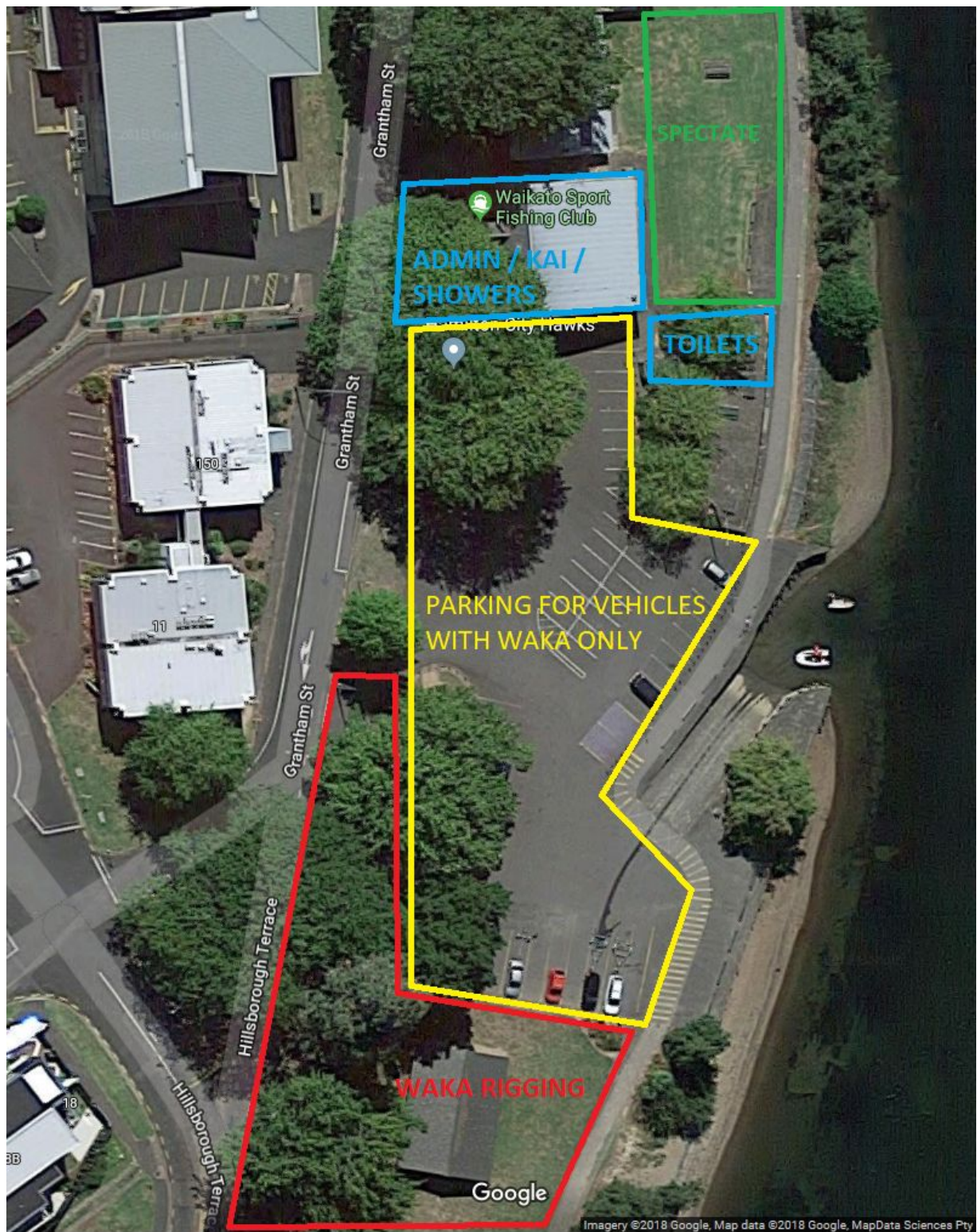
WAKA BOOKING

All NTW waka booking enquiries please contact us on ngataiwhakarongo@gmail.com



Waikato Awa Race 2017

Site Map:



Race Map: 6km

6 km Race Course- turn on buoy



Start Line(Grantham Street)

Turning buoy (ama side)

Race Map 20km

20 km Race course:

Turn 1 - buoy just after Cobham Bridge

Turn 2 - buoy at Pukete Bridge



Start Line/Finish Line (Grantham street)

Turn 1 Buoy (Cobham Bridge)

Turn 2 Buoy (Pukete Bridge)