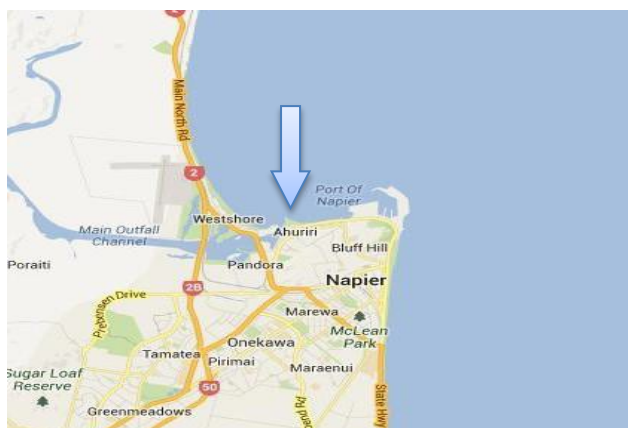


## Te Wānanga o Aotearoa Waka Ama New Zealand Long Distance Nationals 2018 Final Panui | October 2018

Waka Ama Kahungunu in association with Waka Ama New Zealand looks forward to welcoming visitors to the 2018 Te Wānanga o Aotearoa Long Distance Nationals (LDNs) to be held in Napier on 5-6 October 2018.

### VENUE



We will again have two primary venues for this year's LDN event in Napier:

#### *Napier Sailing Club at 63 West Quay, Ahuriri*

All key operations for the LDNs will be based at the Napier Sailing Club. This includes all race operations, registrations and administration, loading bays and all safety checks. The Sailing Club will also be the venue for the prizegivings.

#### *Kakara (Perfume) Point, East Pier Reserve*

The LDNs Fanzone will be located at East Pier Reserve as a course viewing area for spectators and the general public. All races will start and finish from East Pier.

### LATE ENTRIES AND WITHDRAWALS

Any late entries will incur a \$20 per person late fee. Once the club has been invoiced any further changes will incur a \$20 late fee for additions, change of division, withdrawals etc.

i.e. If a W1 paddler is wanting to change from ruddered to rudderless there is a \$20 fee for this change

Any club that withdraws a team after 4<sup>th</sup> October, will still be charged the full entry fee.

### PŌWHIRI

The pōwhiri will be held at the Napier Sailing Club on Thursday, 4 October 2018 commencing at 4.00pm. Participants are requested to assemble in the carpark outside the Sailing Club at 3.45pm ready to proceed with the powhiri once signaled by the hau kainga, at 4.00pm. The kawa for the powhiri is paeke.

## **CAR PARKING AND WAKA DROP OFF**

---

Traffic management at the Napier Sailing Club will be in place from 2.00pm on Thursday, 4 October.

Car parking at the Napier Sailing Club will be restricted and entry will only be permitted to drop off and pick up waka and for emergency services and event officials displaying a car parking pass. If you are dropping off or picking up a waka and you do not have an official car pass displayed then you will be expected to move your car from the venue promptly. We will have loading bay volunteers available to assist you with your waka so that you do not have to leave your vehicle unattended.

General parking is available along West Quay, Pandora Road, Humber Street and Meeanee Quay, Westshore.

A designated parking area will also be available at East Pier however spectators are encouraged to park their vehicles and consider walking between venues to reduce traffic congestion. It is about a pleasant 10-15 minute walk along the waterfront.

The W6 trailer carpark will be located at Meeanee Quay (see Appendix C). The trailer park will be open during the following indicative times:

- Thursday 2.00pm-6.00pm
- Friday 8.00am-10.00am, 2.00pm-5.00pm
- Saturday 7.00am-10.00am, 2.00pm-5.00pm

## **EVENT CATERING**

---

Our local hosts will be providing a rolling BBQ and soups at the Napier Sailing Club venue throughout the event.

The Saturday evening meal will be available to all competitors at the Napier Sailing Club BBQ area from 4.30pm. Competitors are asked to come along early to pick up meals. We are aiming to serve all meals before the commencement of Saturday Prizegiving.

Food vendors will also be located at East Pier.

## **PARA KORE – ZERO WASTE**

---

A reminder that the LDNs will be a zero waste event in supporting Para Kore Aotearoa. Waste management stations will be available at both venues with volunteers who will assist to sort out waste to various recycling categories.

Single use water bottles will not be available at the event so all paddlers are asked to bring their own refillable drinking bottles. Water stations will be established at both venues.

All food vendors and meals provided during the LDNs will be served on compostable or recyclable products.

All participants are asked to help with our waste management campaign by assisting to keep the immediate event areas at both venues clean and tidy at all times.

## MERCHANDISE

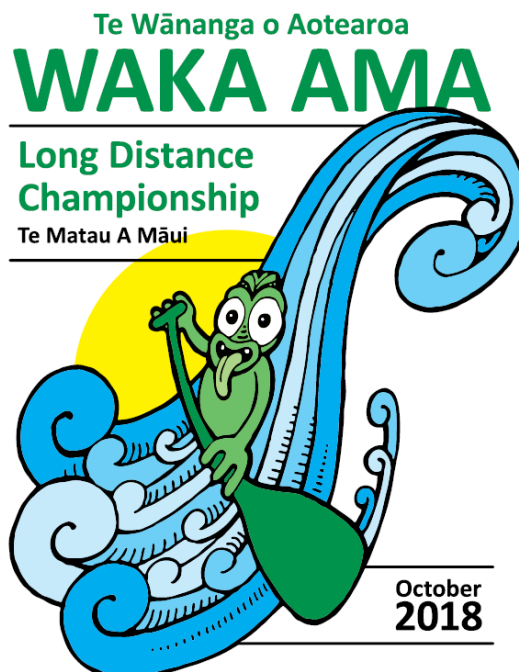
There will be a limited amount of merchandise available to purchase onsite from Friday.



## QUESTIONS AND ENQUIRIES

For any further information and enquiries please go to [www.wakaama.co.nz](http://www.wakaama.co.nz) or contact us on [ldn@wakaama.co.nz](mailto:ldn@wakaama.co.nz).

Finally, thank you our local sponsors, Clubs and organisations for supporting Waka Ama Kahungunu to again host the 2018 Te Wānanga o Aotearoa Waka Ama Long Distance Nationals. Ngā mihi nui ki a koutou!



## EVENT PROGRAMME

### Thursday, 4 October 2018:

2.00pm – 3.45pm	Registrations and administration enquiries open Loading bay open to receive W1, W2 and W3 waka
4.00pm	Pōwhiri Napier Sailing Club – 63 West Quay, Ahuriri
5.00pm – 7.00pm	Registrations and administration enquiries open

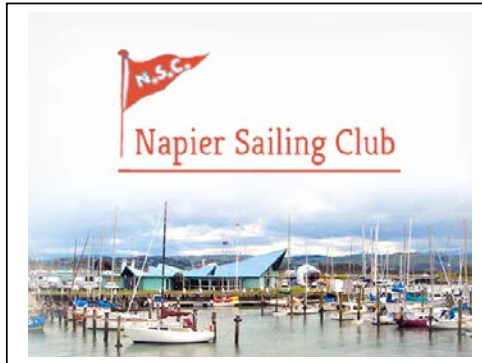
### Friday, 5 October:

<b>8:00am:</b>	Registration/Admin open Race 1 and 2
<b>8:00am</b>	Safety Checks commence
<b>Race 1</b> <ul style="list-style-type: none"> <li>W1 Rudderless</li> <li>W1 Rudderless</li> <li>W2/W3</li> </ul> <p>9.00AM: RACE BRIEFING 10.00AM: RACE START</p>	<p><i>W1 Rudderless:</i></p> <ul style="list-style-type: none"> <li>Senior Women 16km, Junior Women 8km</li> </ul> <p><i>W1 Rudderless:</i></p> <ul style="list-style-type: none"> <li>Senior Men 16km, Junior Men 8km</li> </ul> <p><i>W2/W3</i></p> <ul style="list-style-type: none"> <li>Senior Women 16km, Senior Mixed 16km, Junior Women 8km, Adaptive Women 8km</li> </ul> <p><i>Adaptive:</i></p> <ul style="list-style-type: none"> <li>W1 Adaptive Men 8km</li> </ul>
<b>Race 2</b> <ul style="list-style-type: none"> <li>W1 Rudderless</li> <li>W1 Rudderless</li> <li>W2/W3</li> </ul> <p>12.30PM: RACE BRIEFING 1.30PM: RACE START</p>	<p><i>W1 Rudderless:</i></p> <ul style="list-style-type: none"> <li>Senior Men 16km, Junior Men 8km</li> </ul> <p><i>W1 Rudderless:</i></p> <ul style="list-style-type: none"> <li>Senior Women 16km, Junior Women 8km</li> </ul> <p><i>W2/W3:</i></p> <ul style="list-style-type: none"> <li>Senior Men 16km, Junior Men 8km, Junior Mixed 8km, Adaptive Men 8km, Adaptive Mixed 8km</li> </ul> <p><i>Adaptive:</i></p> <ul style="list-style-type: none"> <li>W1 Adaptive Female 8km</li> </ul>
6.00pm	Prizegiving

### Saturday, 6 October:

<b>6:30am:</b>	Registration/Admin open for Race 3
<b>7:00am</b>	Safety Checks commence
<b>Race 3</b> <ul style="list-style-type: none"> <li>W6 Junior</li> <li>W6 Adaptive</li> </ul> <p>7.30AM: RACE BRIEFING 8.30AM: RACE START</p>	<ul style="list-style-type: none"> <li>Junior 16 Women, Men and Mixed 10km</li> <li>Junior 19 Women, Men and Mixed 16km</li> <li>W6 Adaptive Mixed 16km</li> </ul>

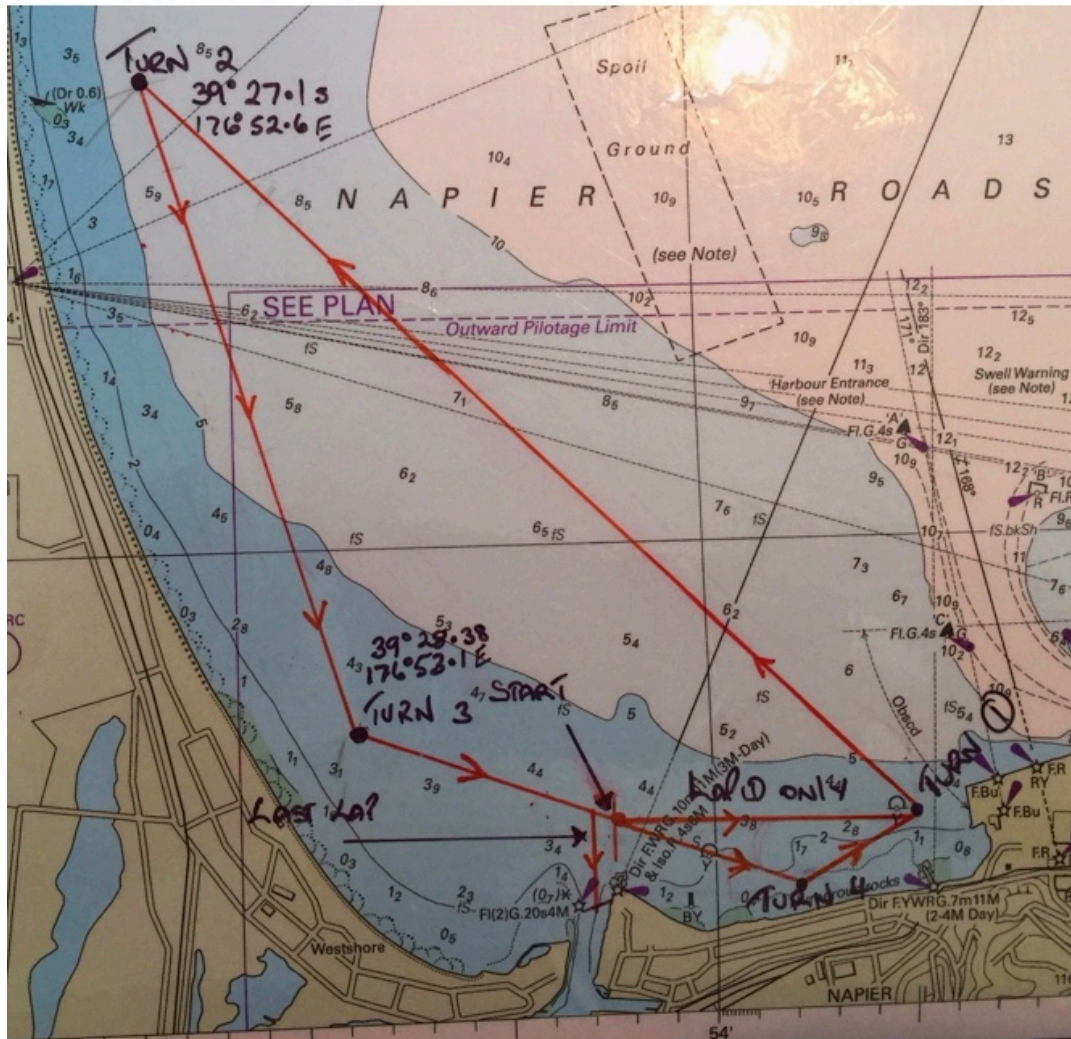
<b>8.30am:</b>	Registration/Admin open for Race 4
<b>9:00am</b>	Safety Checks commence
<b>Race 4</b> <ul style="list-style-type: none"> <li>W6 Women</li> <li>W6 Mixed</li> </ul> 10.00AM: RACE BRIEFING 11.00AM: RACE START	<ul style="list-style-type: none"> <li>W6 Women (Opens, Masters, Senior Masters) 24km</li> <li>W6 Women (Golden Master &amp; Master 70) 16km</li> <li>W6 Mixed (Opens, Masters, Senior Masters) 24km</li> <li>W6 Mixed (Golden Master Mixed &amp; Master 70 Mixed) 16km</li> </ul>
<b>11:00am:</b>	Registration/Admin open for Race 5
<b>12:00pm</b>	Safety Checks commence
<b>Race 5</b> <ul style="list-style-type: none"> <li>W6 Men</li> </ul> 1.00PM: RACE BRIEFING 2.00PM: RACE STARTS	<ul style="list-style-type: none"> <li>W6 Men (Opens, Masters, Senior Masters) 24km</li> <li>W6 Men (Golden Master &amp; Master 70) 16km</li> </ul>
4.30pm	Dinner for competitors to be served at Napier Sailing Club
6.30pm	Prizegiving Poroporoaki





## Appendix A

### COURSE MAP



## Appendix B

### NAPIER SAILING CLUB SITE MAP



#### Key:

1. Napier Sailing Club – registration, race briefings, shower facilities etc
2. Restricted parking (card holders only)
- 2a. Emergency personnel and restricted parking
3. Restricted Area – No Access
4. Loading Bays
5. W1 weigh in area
6. Waka drop off and rigging area
7. Waka drop off and rigging area
8. Waka rigging area
9. Jetty
10. Entrance and exit to Napier Sailing Club through controlled barrier arms

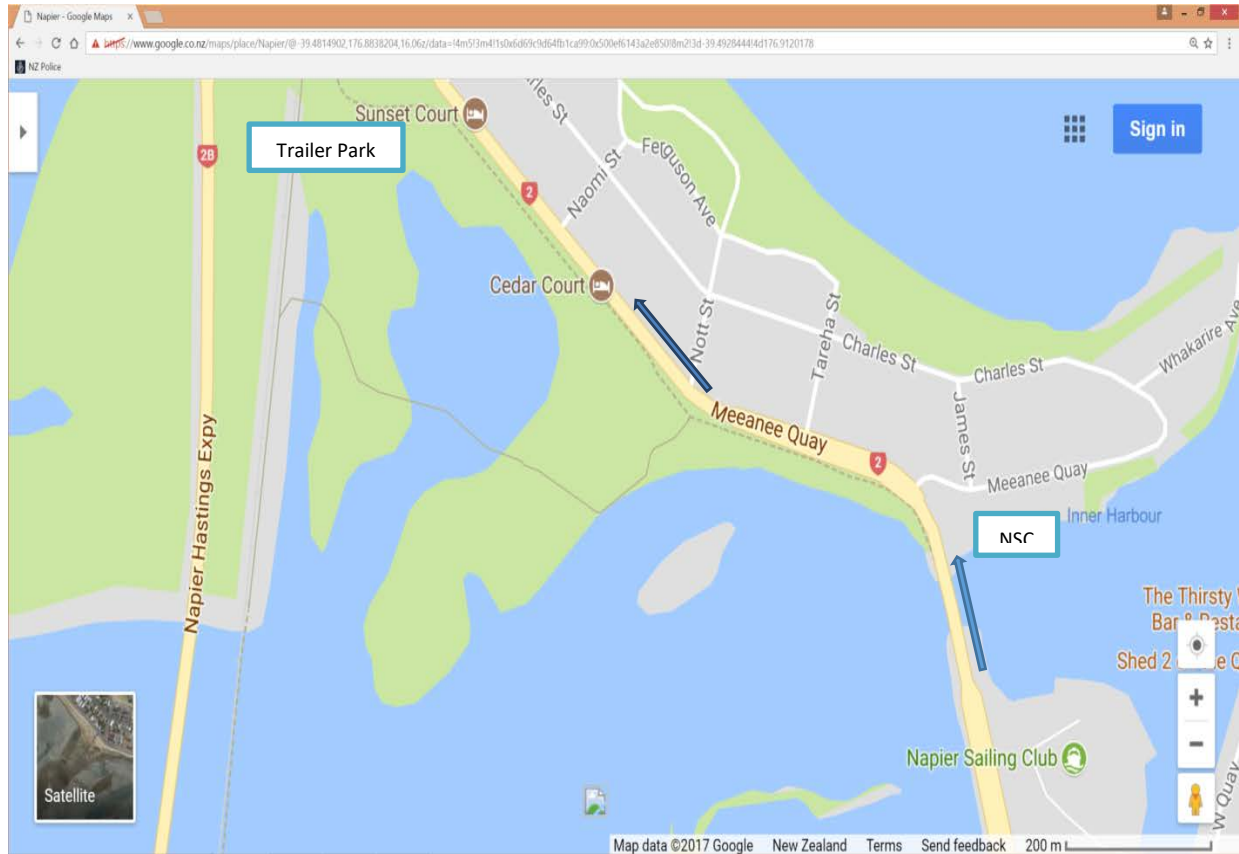


## Appendix C

### W6 TRAILER CARPARK

North of the Pandora Bridge

[entry to the fenced parking area is opposite Naomi Street]



W6 trailer park located at Meanee Quay (opposite Naomi Street), Westshore.

## Appendix D

### VENUE DIRECTIONS

Between the Napier Sailing Club to Kakara (Perfume) Point, East Pier Reserve

Key:

- A** Napier Sailing Club
- B** Kakara (Perfume) Point, East Pier Reserve

*Walking:*

Walking between the two venues is about a 15 minute walk along the waterfront on West Quay past a variety of cafes, bars and restaurants around the inlet at Ahuriri on to Nelson Quay, past the Napier Fishing Club to East Pier Reserve.

*Driving:*

- ➡ • While the shortest driving route from the Sailing Club is to turn left and take the same route as the walkers along West Quay, it is often very busy and congested.
- ➡ • The quickest driving route from the Napier Sailing Club to East Pier Reserve is to take a right turn out of the Sailing Club, turn left at the roundabout on to Pandora Rd, turn left at the railway track onto Lever St. At the Ahuriri shops, turn left onto Nelson Quay and around past the Fishing Club to East Pier Reserve.

