

Value Proposition for Waka Ama Club Members: “What does my affiliation fee get me?”

Where does my Affiliation fee go? – Your affiliation fee (\$15 for an adult, \$12 for a Junior and \$5 for an intermediate and Midget) goes to Waka Ama New Zealand.

What is it used for?

Your affiliation fee helps us to administer the sport and provide you, your club and your region with all of the services, administration and operations below and more!

1	Being part of sport for the whole whanāu
2	Being part of the fastest growing water sport in Aotearoa
3	Ability to be a club affiliated to a National Sporting Organisation recognised by Sport NZ
4	Ability to be a paddler affiliated to a club
5	Waka Ama NZ Website - One of the most up to date sports websites in New Zealand
6	Club listing on the website
7	Club Access to the website Members Area to monitor and administer affiliations and id cards
8	Club Access to online entries for Sanctioned Events listed on the calendar
9	Club Access to online entries for National events listed on the calendar
10	Eligible to take part in IVF World Sprints (according to criteria being met)
11	Recognition by the National Sporting Body for funding purposes. Letters of support for funding available to all affiliated clubs
12	Continual improvement and development of website and technical services
13	Use of the Club Tool Kit
14	Safety Rules developed in conjunction with Maritime NZ
15	Sanctioning process for all events – provides guidelines and criteria for hosting events
16	Safety Guidelines and Rules for events
17	Access to heavily reduced Public liability insurance through sanctioning
18	Legally reviewed Safety Waivers and Safety Documents
19	Free online entries set up and admin support for sanctioned events hosted by clubs and regions
20	Monthly members prize draw (sees 3 affiliated paddlers every month win prizes)
21	Exclusive deals offered by our Suppliers and/or Sponsors
22	Sprint National races screened on Maori TV
23	Easy to understand Safety Videos – Specific for Waka Ama (Tips and Tricks) http://wakaama.co.nz/stories/read/1003352
24	Paddling Video and Booklet resource on Website https://www.youtube.com/user/wakatv
25	Free Steering Clinics for affiliated members
26	Free Rigging Clinics for affiliated members
27	Access to Coaching Clinics – (Roll-out 2015)
28	Waka Ama Flip and Float sessions
29	Templates for training schedules and regular development tips on Website (commencing 2014)
30	Adaptive Waka Ama pathway
31	Free workshop for Pocket Timer Pro use
32	‘How to’ Guide for Pocket Timer Pro developed and available on website
33	Waka Ama NZ Facebook page managed and updated regularly
34	Free advertising for affiliated members to sell their canoes on the waka ama new Zealand website/facebook
35	Waka Ama New Zealand Board – Providing sound and professional governance

36	Access to the 25 Year strategic vision for the sport
37	Help with strategic plan development
38	Access to advice on financial accountability and sound financial management
39	Affiliated Club voting process for Board elections
40	Affiliated paddlers can take part in National Sprint Championship Events at Karapiro
41	Access to a world class race course owned and provided by Waka Ama NZ
42	Affiliated paddlers can take part in National Long Distance Championships (Organised in conjunction with host Regions)
43	Affiliated paddlers can take part in all sanctioned events
44	All sanctioned events meet a safety standard
45	Access to New Zealand Post Sponsorship – Providing branded product for all paddlers at National Sprint Championship and National Secondary School Championship - waterproof pouch, bags, hats, Kete, drinks bottles, bailers etc...
46	Medals awarded at National events
47	Involvement in a national selection process for World Sprints events
48	Co-ordination of World Sprints Teams
49	The uniform provided to World Sprints paddlers
50	Advocacy and leadership for the sport at an International level
51	Marketing and promotion of Waka Ama through the NZ Post PR company
52	A strong relationship with Water Safety New Zealand
53	Water Safety information available online
54	Increasing awareness of Water Safety & PFD's
55	Professional administration of the organisation/sport
56	Access to the Waka Ama New Zealand office to assist and answer any questions you have
57	Club membership database management system for clubs
58	Paperless invoicing for clubs
59	Xero Accounting package software available to regions
60	Free professional photos from all major events (Taken by Garrick Cameron – Studio5.co.nz) All available to download free from our website – if you wish for Higher res versions simply contact us we will send to you. https://plus.google.com/u/0/photos/110544200822387100000/albums
61	Waka TV – A collection of YOU TUBE videos all featuring waka ama https://www.youtube.com/user/wakatv
62	Waka Ama Twitter – Managed access
63	Waka Ama History – The history of our sport documented for all to enjoy http://www.wakaama.co.nz/pages/read/1003368
64	Historical results of events http://www.wakaama.co.nz/stories/read/1003434
65	Strategic planning assistance for regions & clubs
66	Access to a constitution template for new clubs (Available from 2014)
67	Comprehensive Race Rules and Review process
68	Event templates
69	Waka Ama Tikanga Booklet (available 2015)
70	Outward Bound Scholarships available for all affiliated members to apply for annually
71	Collaboration with International Federations to provide access to events like Gubbi Gubbi in Australia.
72	Organisation of the National Secondary School Championships (In conjunction with Te Waiariki Porea Trust)
73	Access to international event information via the waka ama website http://www.wakaama.co.nz/pages/read/1003502

74	Discounted Life Jackets through RFD for Affiliated clubs and members
75	A point of access to other clubs in other regions when you are travelling to different regions and want to go for a paddle but don't know where to go or who to go to
76	Legal advice related to waka ama business
77	Access to Sport NZ and its resources
78	Access to regional sports bodies
79	Access to become a Waka Ama volunteer and upskill in various roles at a club, regional or national level
80	Volunteers acknowledged at National events
81	Have input on events by completing the online surveys
82	Access for clubs to Waka Ama NZ staff presentations at Regional Meetings twice yearly
83	Easy online access for a paddler to check their affiliation status
84	Comprehensive Race Calendar for paddlers
85	Flexible affiliation across 1 or more clubs to maximise regatta opportunities
86	Governance development for regions and clubs
87	Steering information for beginners on website
88	Officiating and admin up skilling
89	Assistance with race management (advice in lead up to events)
90	Para Waka Ama Equipment development and resources for clubs.
91	Waka Ama Flip & Float Certificates (Roll out 2014)
92	Development of Unique Waka Ama Coaching Pathway
93	Management of race calendar on behalf of regions, clubs and paddlers
94	Unique ID Card designs
95	Opportunity to share your paddling stories via the website
96	Certification of Waka Ama Safety Basics through Coast Guard Boating education
97	Waka Ama NZ support for nominations to various sports awards, nationally and regionally
98	Advocacy for the sport at a National level
99	Advocacy of the sport Internationally
100	Online database of membership Statistics – Used by clubs for funding applications, students for assignments etc.
101	Being officially part of the best sport in New Zealand!

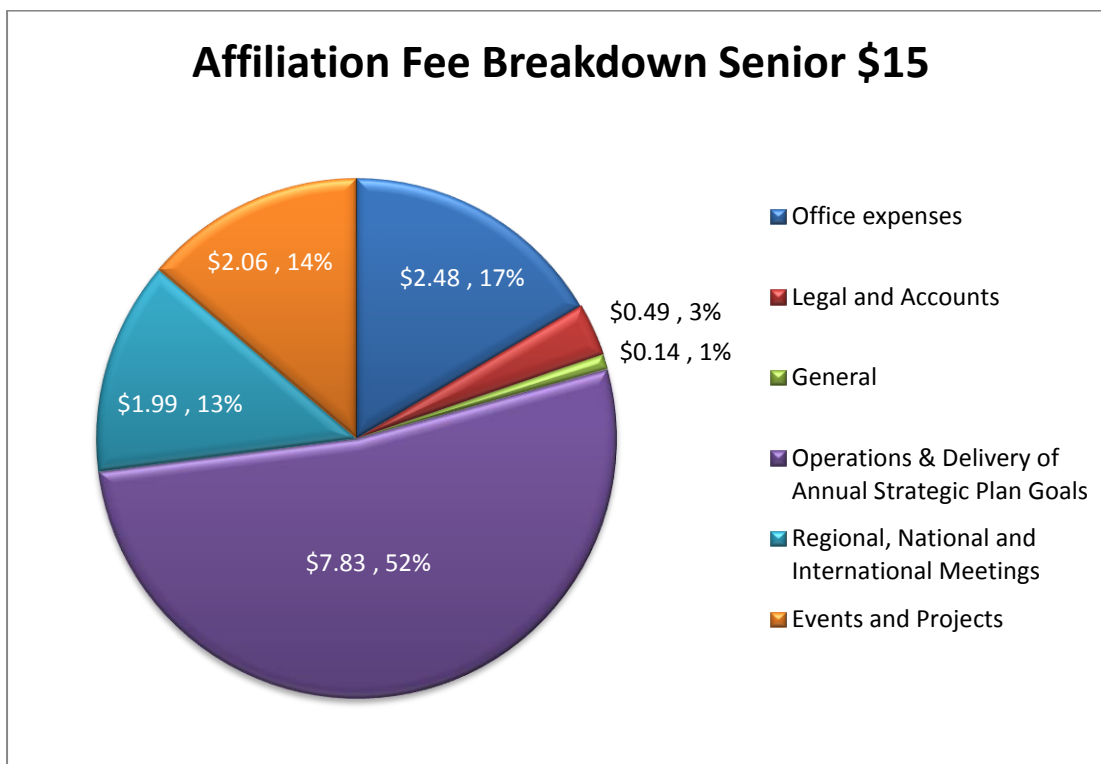
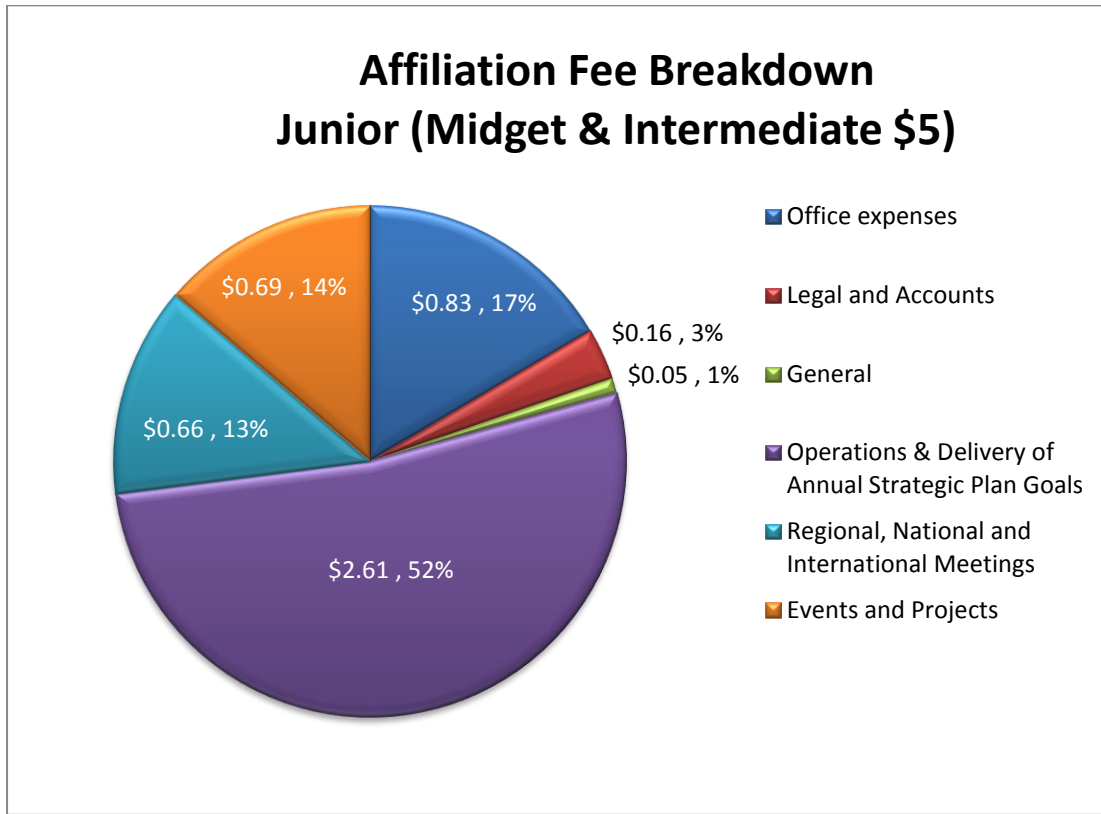
Is there Value for Money?

Value for money is often relative to what else you can get for the same amount of money (Opportunity Cost). If you chose not to be a member of a waka ama club then you could spend that \$15, \$12 or \$5 national affiliation fee on other items or services. For example \$15 could buy you 3 coffees in Auckland, or 1 Hoyts movie ticket.

We are always looking for ways to increase the value you get, and the things we can offer our members as well as ways to make club administrators jobs easier.

In terms of actual dollars figures the per paddler affiliation fee can be broken down in the follow cost areas as below:

Per paddler Affiliation fee- Breakdown -1 July 2012 - June 2013



Affiliation Fee Breakdown Junior \$12

