



**GUNZ 'N ROZES  
OUTRIGGER TEAM**

## **WAITAKERE GUNZ 'N ROZES W6 RACE EVENT**

### **Waitemata Harbour Race**

### **10k "Kauri Point" and 20k "Harbour Bridge"**

***Saturday 5 May 2017***  
**Bridge Ave, Te Atatu South, Auckland**

#### **Event Details**

Host Club / Team: Waitakere Outrigger Canoe Club – Gunz 'n Rozes  
Contact person: Julz Pua-Tipokoroa  
Mobile: 021 686 281  
Entries: Waka Ama NZ online system

Divisions: All normal divisions N.B. any division may paddle in 10k or 20k races, except juniors  
10k only  
Race Fees: Seniors \$20 per paddler  
Juniors \$10 per paddler

#### **Race Programme**

**We intend to run on-time!!**

**Please Note: Races 1 / 2 and Races 3 / 4 run at the same time.**

7.00am Registration Opens, collect pack from registration

7.10am Safety boat briefing for all safety boat personnel at registration area

7.20am Karakia and Race Briefing for Kauri Point Races 1 & 2 – 10km at registration area

7.45am 10km Kauri Point Race 1 start (Women and Mixed) (to finish around 9.00am)

7.55am 10km Kauri Point Race 2 start (Men) (to finish around 9.00am)

8.50am Race Briefing for Harbour Bridge Races 3 and 4 – 20km at registration area

9.15am 20km Harbour Bridge Race 3 start (Women and Mixed) (to finish around 11.30am)

9.35am 20km Harbour Bridge Race 4 start (Men) (to finish around 11.30am)

There will be free hot soup after each race. Food for sale from Waitakere Club Juniors.

## Site Instructions

Please follow instructions from our friendly officials.

**Most important requirement – sorry, we are not permitted to park on-site – you must park your vehicle out on the street. However those towing W6 waka may park on-site in the designated area.**

You will be met at the gate and directed to the waka set-up area. The waka area is situated some distance from the rego / briefing and launching areas – you need to be organised!!

Please complete your registration asap.

You must attend briefings on time, at the registration area. Your captain will need to sign off on your team's attendance. No signature, no result recorded.

Looking from the land there is a right hand ramp and a left hand ramp. Use of the right hand ramp is prohibited (this is a Te Atatu Boating Club requirement). The left hand ramp is fine.



## Safety Checks

All safety checks need to be completed 15mins prior to racing. Checkers will be in high vis and it is the paddler's responsibility to ensure your waka is checked. A coloured plastic tie will be attached to your kiato to signify check completed. If your waka is being used for multiple races you need to have another check between races (different coloured ties will be used for each race).

## Race Courses

Races will begin outside the ramp. Teams will need to negotiate under the motorway bridge 200m from the start line, and then moored boats outside the bridge. Briefings will emphasise the need for safety, people and property.

See the Course Maps below.

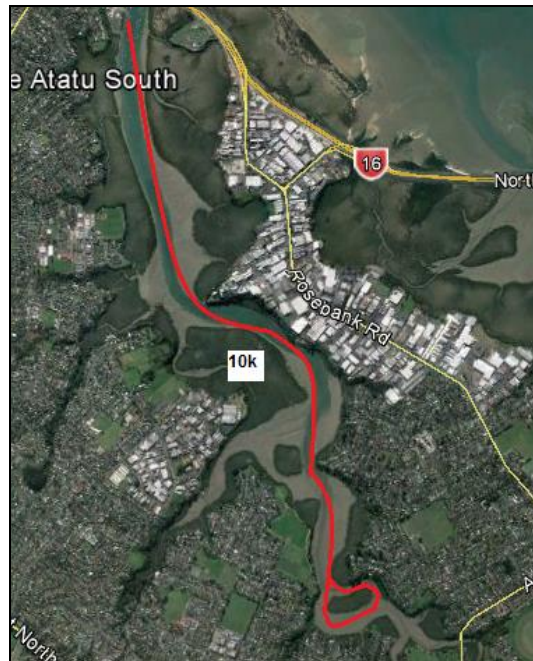
High tide is 11.03am. Races 1 and 2 will start into the tide, Races 3 and 4 will finish just after high tide.

The 10km race turns on a green channel marker on the other side of the harbour. The 20k race turns at the Harbour Bridge after rounding a buoy at Chelsea Sugar Works. Both courses require the rounding of a number of channel markers – this will be explained at briefings and the lead boat will track the course around each marker. There will be time penalties for failure to round a marker.

### Good Weather Course – Waitemata Harbour



Bad Weather Course – Whau River (20k twice around)



## Results

All results will be posted on the Waka Ama website on the Monday after the race, they will also be displayed at the venue.

**WE LOOK FORWARD TO YOU JOINING US FOR A GREAT DAY'S RACING!!**