



WAITAKERE OUTRIGGER CANOE CLUB

is proud to host

“Waitemata Hoe - W6 Race”

8km Short Course and 16km Long Course

Saturday 18 August 2018

Bridge Ave, Te Atatu South, Auckland

Event Details

Host Club: Waitakere Outrigger Canoe Club

Contacts: Daniel Mana-Daniel 021 070 9535 or Lora Martin 020 407 62060

Entries: Waka Ama NZ online system

Divisions: All normal divisions N.B. any division may paddle in 8km or 16km races (except Juniors short course only)

Race fees:

Short Course \$10 per paddler

Long Course \$20 per paddler

No entries or payment will be accepted on race day. Entries close Monday 13th August and all payments need to be cleared by Wednesday 15th August.

Race Programme

We intend to run on-time!

Time	Description	Grades
0730	Waka Arrive, Unload, Lash, Register and Safety Checks	
0845	Karakia	
0850	Race 1 Brief (8KM)	Novice / Juniors / Adult - Short Course
0915 – 1015	Race 1 Start	
1035	Race 2 Brief (16KM)	Mixed / Women – Long Course
1100 – 1300	Race 2 Start	
1300	Race 3 Brief (16KM)	Men – Long Course
1320 – 1520	Race 3 Starts	
1530 -1600	Prize Giving and Close	N.B. No prizes for placing however spot prizes on offer ☺

There will be free hot soup after each race and food for sale from Waitakere Club Juniors.

Site Instructions

Please follow instructions from our friendly officials.

Most important requirement – sorry, we are not permitted to park on-site – you must park your vehicle out on the street. However, those towing W6 waka may park on-site in the designated area.

You will be met at the gate and directed to the waka set-up area. The waka area is situated some distance from the registration, briefing and launching areas.

Please complete your registration ASAP.

You must attend briefings on time at the registration area. Your captain will need to sign off on your team's attendance. No signature, no result recorded.

Looking from the land there is a right hand ramp and a left hand ramp. Use of the right hand ramp is prohibited (this is a Te Atatu Boating Club requirement). The left hand ramp is fine.



Safety Checks

All safety checks need to be completed 15mins prior to racing. Checkers will be in high vis and it is the paddler's responsibility to ensure your waka is checked. A coloured plastic tie will be attached to your kiato to signify check completed. If your waka is being used for multiple races you need to have another check between races (different coloured ties will be used for each race).

Race Courses

Races will begin outside the ramp. Teams will need to negotiate under the motorway bridge 200m from the start line, and then moored boats outside the bridge. Briefings will emphasise the need for safety, people and property.

See the Course Maps below.

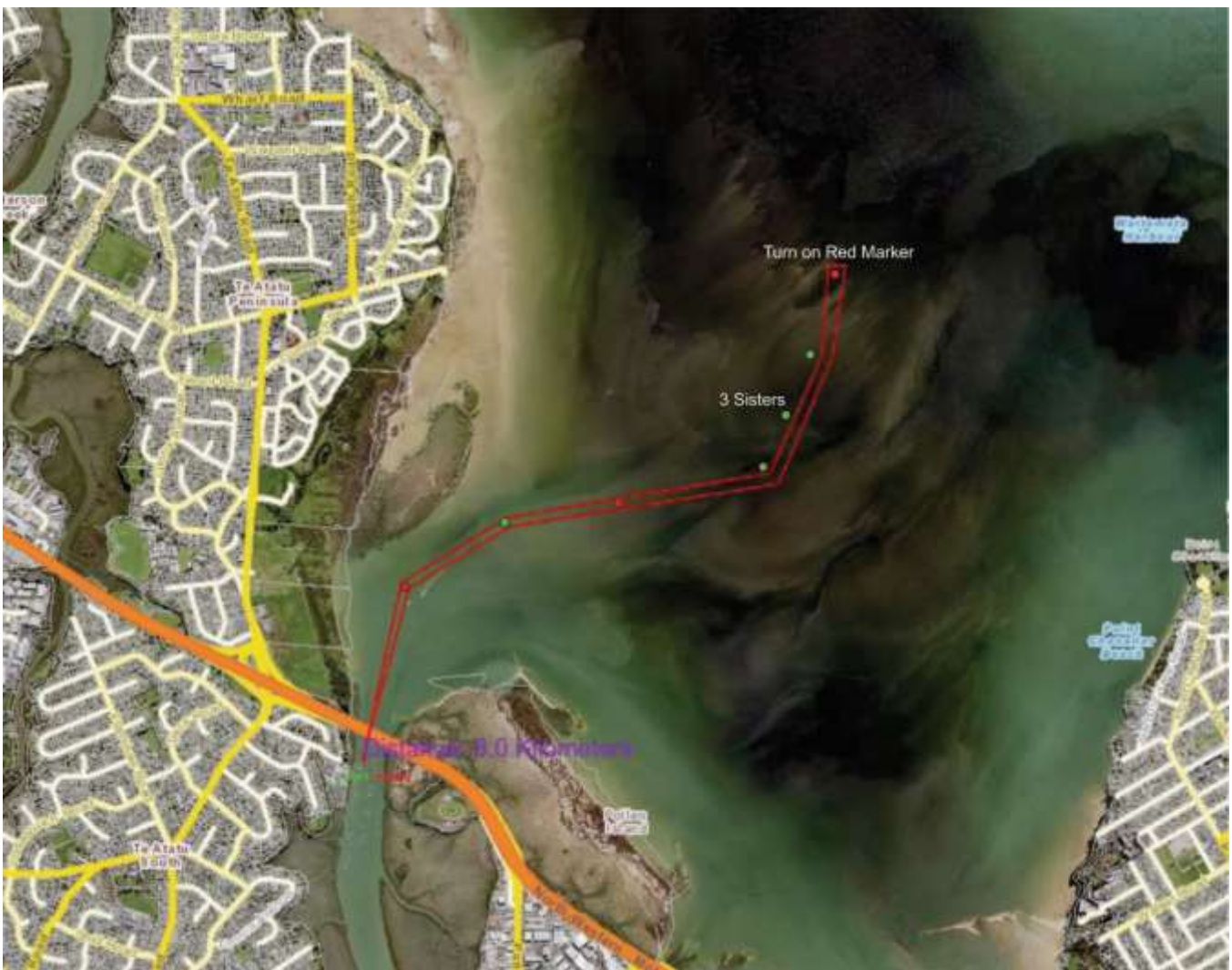
High tide is 1250.

The 8km race turns on a red channel marker after the 3rd green channel marker. The 16km race turns at the buoy near Chelsea Sugar Works. Both courses require the rounding of a number of channel markers – this will be explained at briefings and the lead boat will track the course around each marker. There will be time penalties for failure to round a marker.

Results

All results will be posted on the Waka Ama website on the Monday after the race and they will also be displayed at the venue.

WE LOOK FORWARD TO YOU JOINING US FOR A GREAT DAY'S RACING!!



Short Course 8km



Long Course 16km



Bad Weather Course 8km (16km x 2 circuits)

