

Become a Hireup support worker

Choose who you support and when you work on Hireup, the online platform for Australians with disability to find, hire and manage support workers who fit their needs and share their interests.

How it works



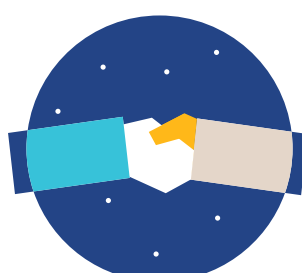
Build

Build a Hireup profile, get verified and join the community.



Find

Find people to support on the Hireup job board.



Hire

Get hired by people seeking support in your local area.



Manage

Manage your support and get paid with ease through our online dashboard.

What support can I provide?

On Hireup you can provide a range of different supports, from in-home personal care to support at work or in the community.

The type of support you provide is entirely up to you and is most effective when you bring your personality, skills and interests to the job. Our diverse network of workers has been built to provide a range of skills for people seeking support to choose from, this means both industry newcomers and career support workers can join Hireup.



Home maintenance



In-home care



Personal care



Out & about



Education & employment



Therapy support



Transport



Specialist (high needs)

Pre employment checks

| | |
|---|-------------------------------------------------------------------|
| ✓ | Driver's licence or passport |
| ✓ | CV |
| ✓ | Two professional referees |
| ✓ | Police Criminal Record Check |
| ✓ | CPR and/or First Aid Certificate |
| ✓ | Working with Children Check <i>(if working with children)</i> |
| ✓ | Working with Vulnerable People Check <i>(only certain states)</i> |

How do I get started?

- 1 Build a Hireup profile
- 2 Complete our pre-employment checks
- 3 Get verified by Hireup

Your profile is your chance to tell our community about yourself and the kind of support you can provide. It is your Hireup calling card and first impressions count so make sure your profile is well-written and professional, shows off your personality and is always kept up to date.

VISIT www.hireup.com.au FOR MORE INFORMATION



How do I find work?

There are two ways to connect with people seeking support on Hireup:

- 1 Browse the online job board for new opportunities
- 2 Search and message any users actively seeking support in your area



How do I get paid?

Get paid quickly and simply through our secure online platform. We pay our workers fortnightly and make super and tax contributions on their behalf. Our contractor-free model means you are properly supported in your work and receive casual employee benefits, including casual and penalty pay loading.



How do I build my career?

Take on as much work as you would like and develop your Hireup profile with industry insight and exposure. Hireup's network of people seeking support is growing rapidly and you will find many and varied job opportunities to build your career.

Being a Hireup support worker

Join Australia's national community of local supports and find meaningful work as a Hireup support worker.

- Community
- Purpose
- Opportunity
- Flexibility

Ready to get started?

Bring your whole self to work

www.hireup.com.au/register