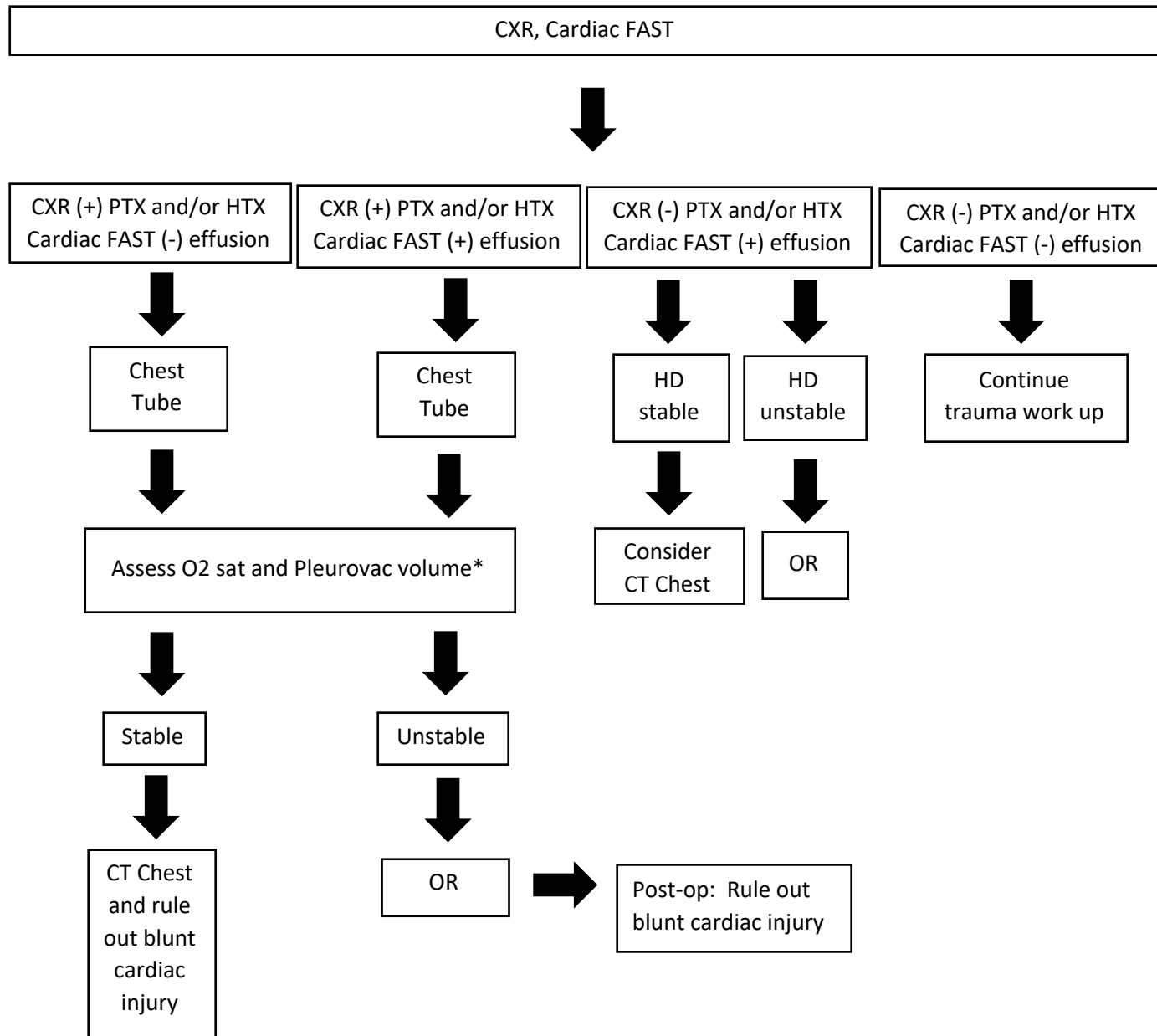


Blunt Chest Trauma Evaluation and Management



Indications for CT chest w/contrast:

- Rapid deceleration mechanism
 - Fall >20 ft
 - MVC >40 mph
- Auto versus pedestrian
- Age >60
- Chest pain
- Intoxication
- Altered mental status/alertness
- Distracting painful Injury
- Chest wall tender to palpation
- Hypoxia
- Abnormal CXR

*Immediate output of 1L-1.5L of blood, or ≥ 200 mL/hr x 4hrs or hemodynamic instability with ongoing blood loss into the chest tube mandates operative exploration.