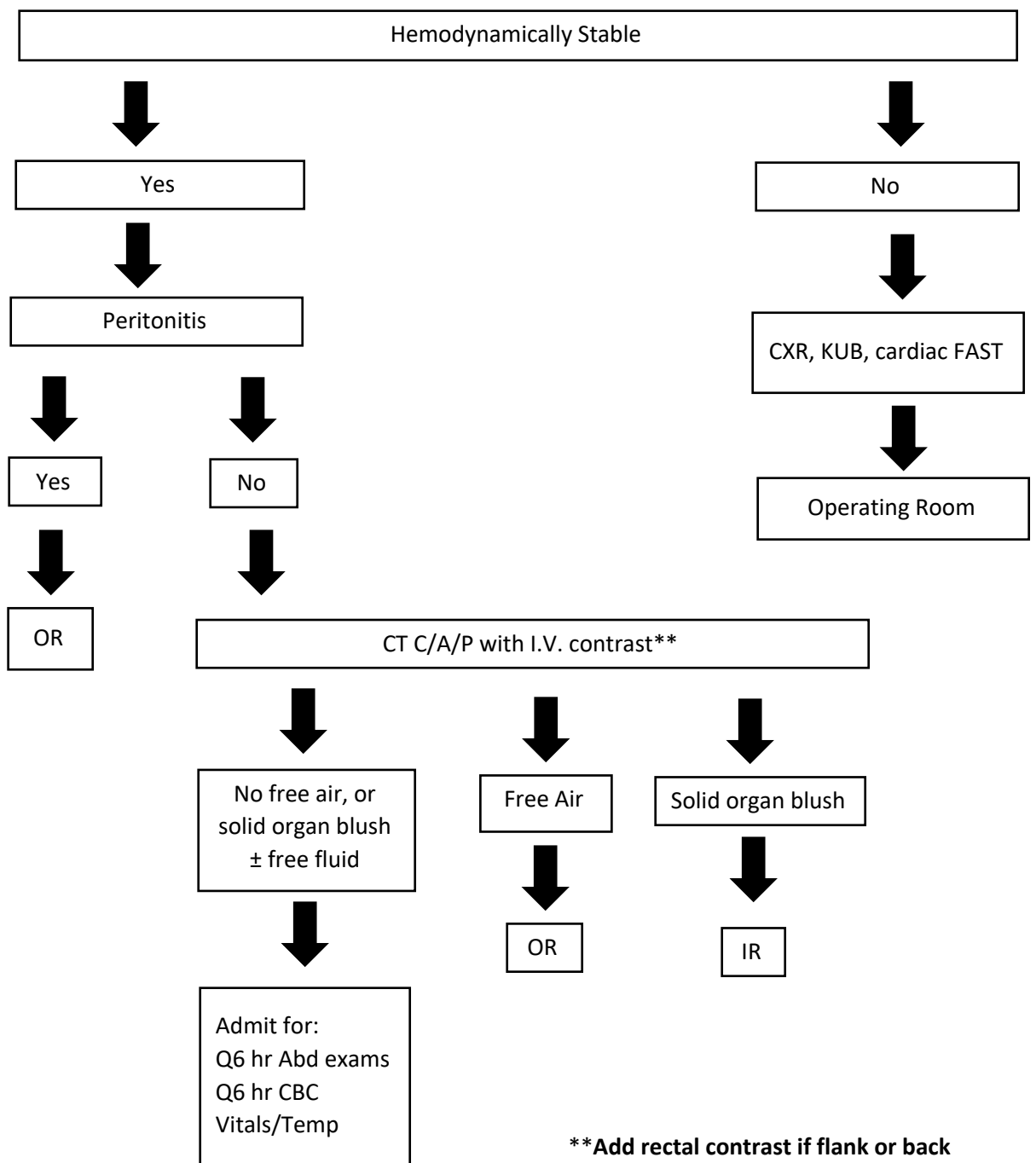


Penetrating abdominal/flank/back injury evaluation and management*



Abdomen: trans-nipple line superiorly, inguinal ligaments and symphysis pubis inferiorly and anterior axillary line laterally

Flank: area between anterior and posterior axillary lines from 6th intercostal space to iliac crest

Back: posterior to the axillary lines from the tip of the scapulae to the iliac crests

*If injury is from left nipple to left costal margin (anteriorly) to tip of scapula to iliac crest (posteriorly), perform diagnostic laparoscopy to rule out diaphragm injury ≥ 24 hrs obs

**Add rectal contrast if flank or back