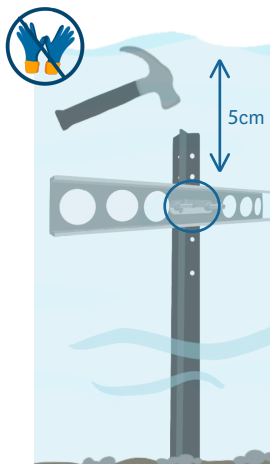


eDNA Manifold-mount Instructions



WILDERLAB
Discovery through DNA

Manifold set up:



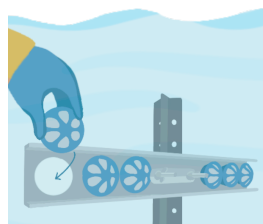
Hammer your waratah into the stream bed, in an area of moderate to high flow.

Attach the passive sampler manifold to the waratah using the provided U-bolt and nuts with the edged section of the manifold facing upstream. Ensure the top of the manifold is approximately 5cm below the stream surface.

Leave the manifold for approx. 5 minutes prior to inserting the filter pods to reduce the risk of cross contamination between sampling events and sites.

Deploying the passive sampler:

1



Put on a pair of gloves from the kit, and carefully push each filter pod (up to 6 can be used) into place with the leaf guard facing upstream. Ensure a tight and secure fit.

2

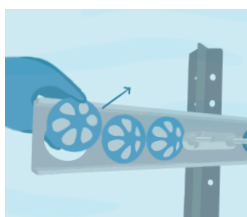


Record the location co-ordinates in WGS84 decimal format (for example -41.30951, 174.82110 as displayed on Google Maps).

Leave the sampler deployed for 24 hours.

Retrieving the passive sampler:

1



Put on the remaining pair of gloves. If you have more than one filter pod, work with one at a time: gently remove a filter pod from the manifold by pushing on the edges of the pod from the back.

2



Pointing the leaf guard to the ground, pull on the easy-pull tag protruding from the back of the filter pod to remove the sponge filter. This motion squeezes out excess water from the sponge filter.

3



Avoid touching the filter directly. Holding the tag, flick the filter in a downward motion to rid the filter of even more excess water.

4



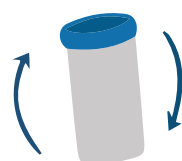
Take the sample jar out of the kit and place only the sponge filter in the sample jar.

5



Take out the small syringe containing preservative and unscrew the cap. Dispense all preservative into the sample jar containing the filter.

6



Screw the jar lid on tightly, then shake the sample jar well to ensure distribution of the preservative throughout the filter.

7



Repeat these steps for all filter pods in your manifold. Place all sample jars in the sample bag, and complete the sample information on the back of the bag.



If you would like more information including instructional videos, please scan the code to visit wilderlab.co/directions



Submit your samples online at wilderlab.co/submit-samples.

Print and sign the Chain of Custody (CoC) form that will be emailed to you after online sample submission. Include this in the parcel with your samples (no refrigeration necessary).

Send your samples and CoC form to the address provided in the auto-email.

An email will be sent to you after sample submission with details on where to send your parcel.

Send your samples back to us within one month from collection.

If this isn't possible, ensure that your samples are stored in a freezer at -20 °C until you send them.