

# NEXO

Hyundai's next-generation  
fuel cell electric vehicle.

Fuel cells convert chemical energy in hydrogen to electricity, emit nothing but pure water and offer high fuel efficiency and an ultra-quick refuelling time of 3 minutes.



## Driving to a cleaner future



Zero CO<sub>2</sub> and  
noxious emissions



Filters and purifies  
the air as it drives



Emits nothing  
but water vapour



Quiet operation  
(no noise pollution)



Touchable surfaces made  
from bio-materials

## Cutting-edge technology for everyday



Refuelling time  
of 3 minutes



5-star  
EURO NCAP

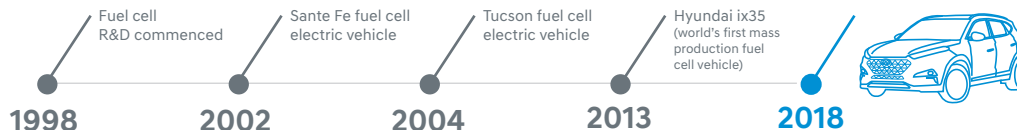


World's best fuel cell efficiency,  
safety and driving range



Ability to power  
external devices

## Hyundai's hydrogen journey



Official member

Hydrogen Council

co-chair

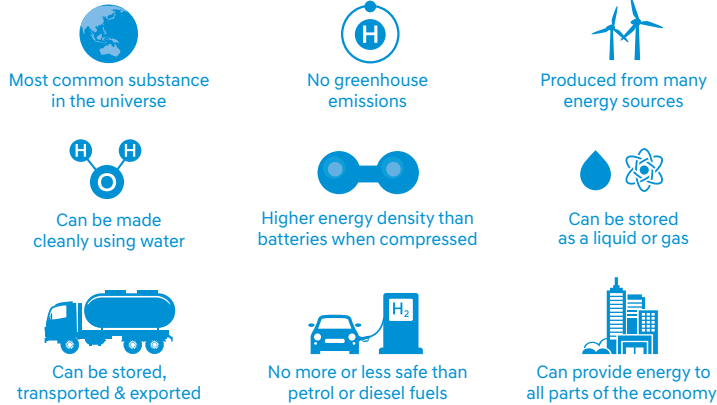
AUSTRALIAN  
HYDROGEN  
COUNCIL

co-founder

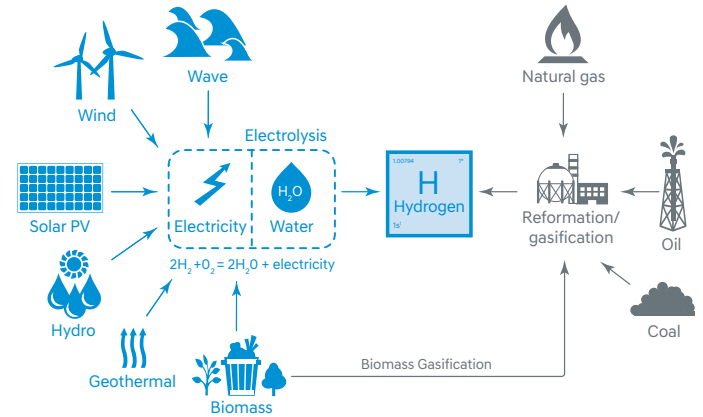
HYUNDAI

BLUE-DRIVE

## Why hydrogen?

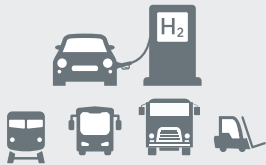


## Where hydrogen comes from



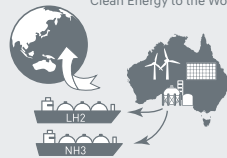
## Hydrogen opportunities

Refuelling transport vehicles



Export to overseas

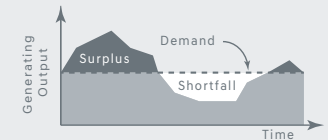
"Clean Energy to the World"



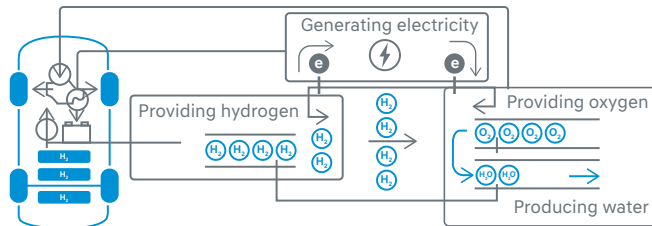
Stationary power applications



Smoothing fluctuations in renewable energy and storing surplus



## Fuel cell drivetrain functionality



## Components of a hydrogen refuelling station

