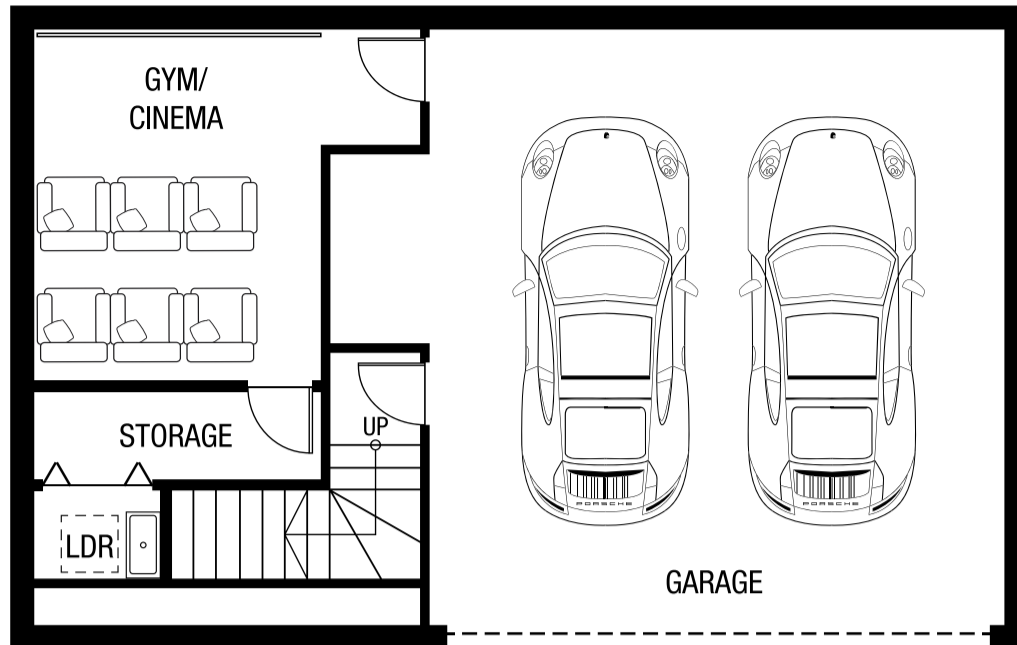
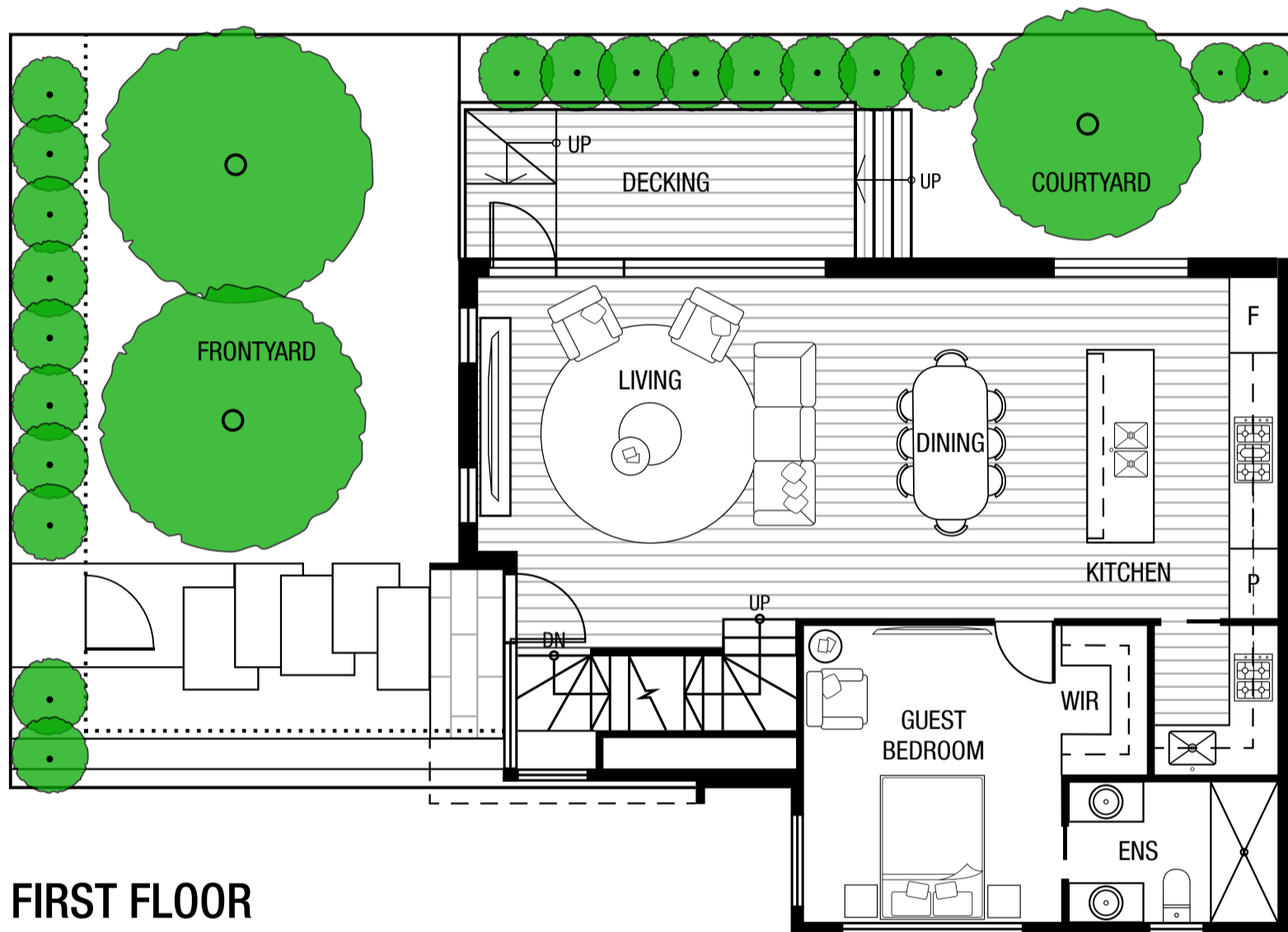


UNIT 1

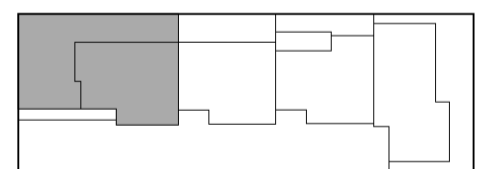
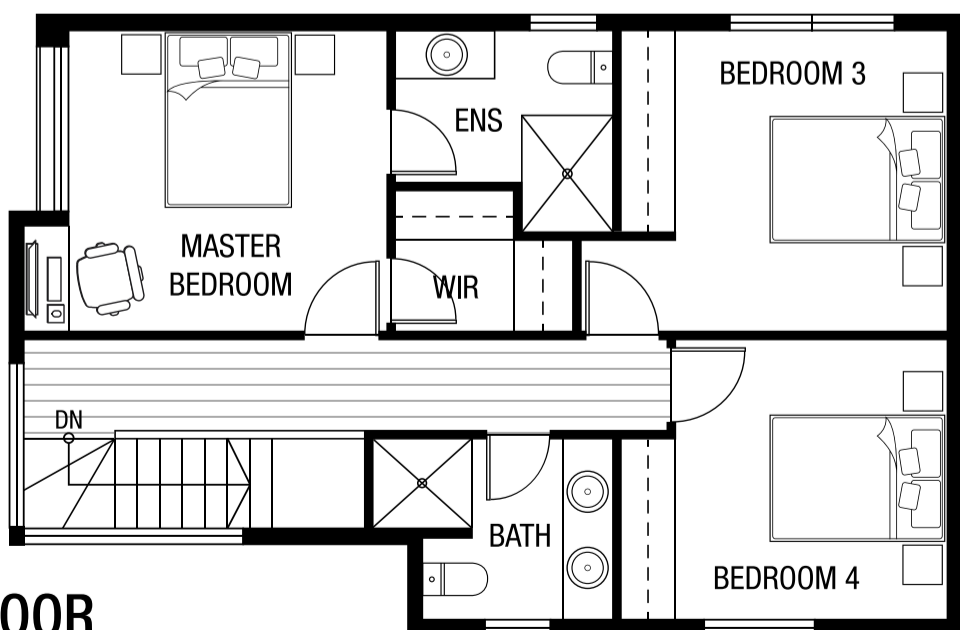
GROUND FLOOR



FIRST FLOOR



SECOND FLOOR



ESTIMATED AREAS

GROUND FLOOR	78.2	M ²
FIRST FLOOR	90.0	M ²
SECOND FLOOR	66.3	M ²
TOTAL INT FLOOR AREA	234.5	M ² (25.0 SQ)
P.O.S.	84.8	M ²

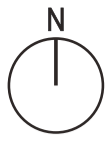


18 AMDURA RD DONCASTER EAST

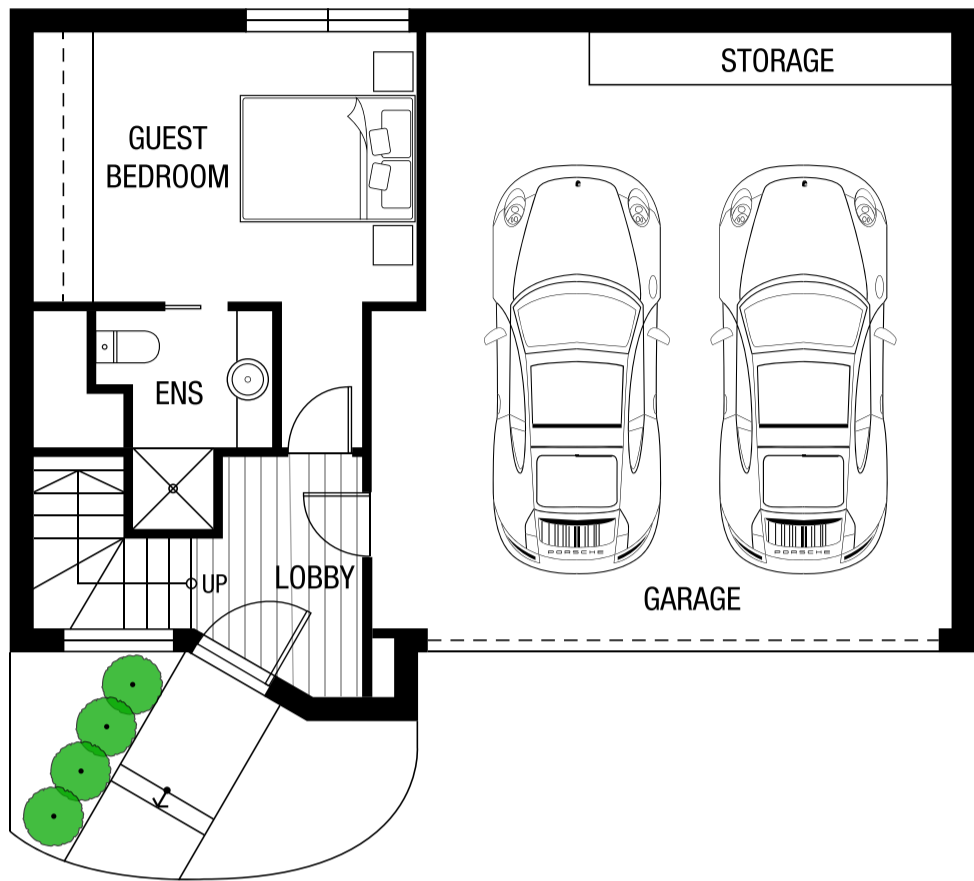
ARDEN

RESIDENCES

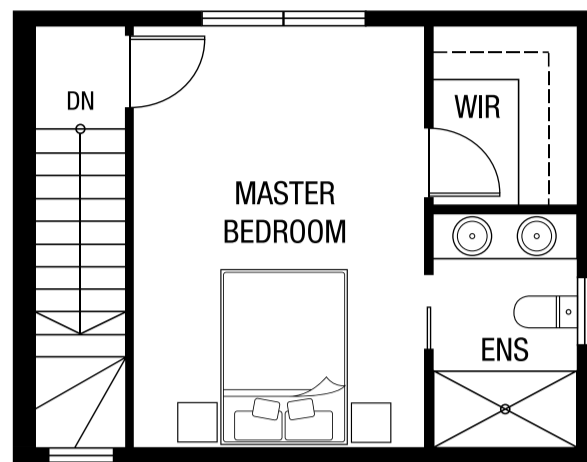
These plans are intended as a guide only. The dimensions and areas are approximate only and may not accurately represent the actual dimensions and areas of the dwellings or the spaces within them and are subject to change without notice. In addition, locations of utilities may vary during construction and fittings and fixtures on these plans are for illustration purposes only. The areas are generally measured in accordance with Property Council of Australia Methods of Measurement. Prospective purchasers must rely on their own enquiries and should refer to the Contract of Sale and its schedules for all matters to be included in the purchase price, of the dwelling, including plans, finishes, fittings, appliances and other particulars of sale. Loose furnitures and white goods are not included. Extent of floor finishes may vary. External spaces and landscaping are indicative only.



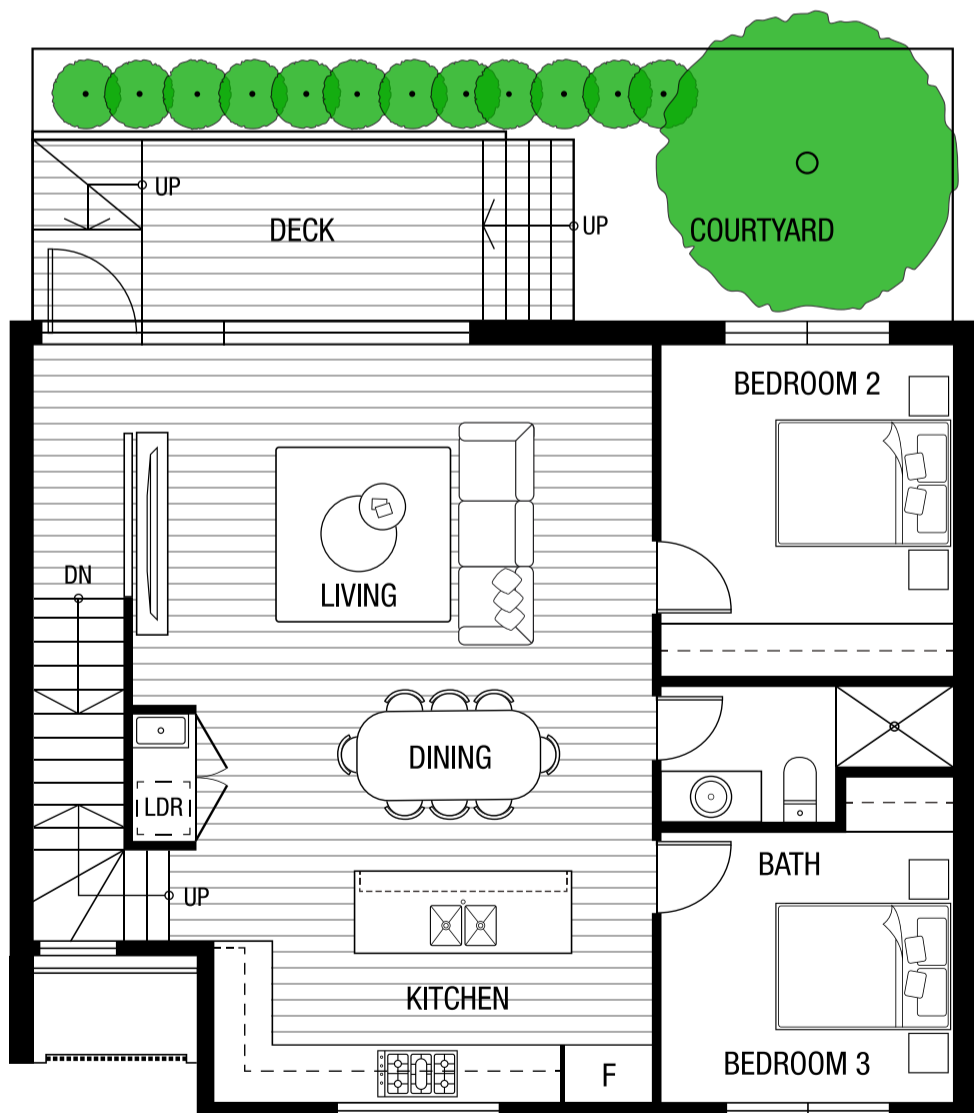
UNIT 2



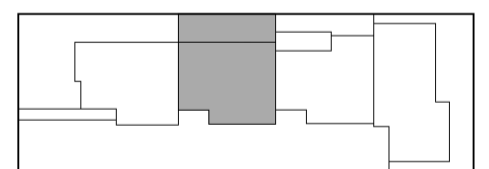
GROUND FLOOR



SECOND FLOOR



FIRST FLOOR



ESTIMATED AREAS

GROUND FLOOR	74.8	M ²
FIRST FLOOR	87.8	M ²
SECOND FLOOR	31.1	M ²
TOTAL INT FLOOR AREA	193.7	M ² (21.0 SQ)
P.O.S.	30.3	M ²

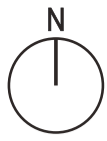


18 AMDURA RD DONCASTER EAST

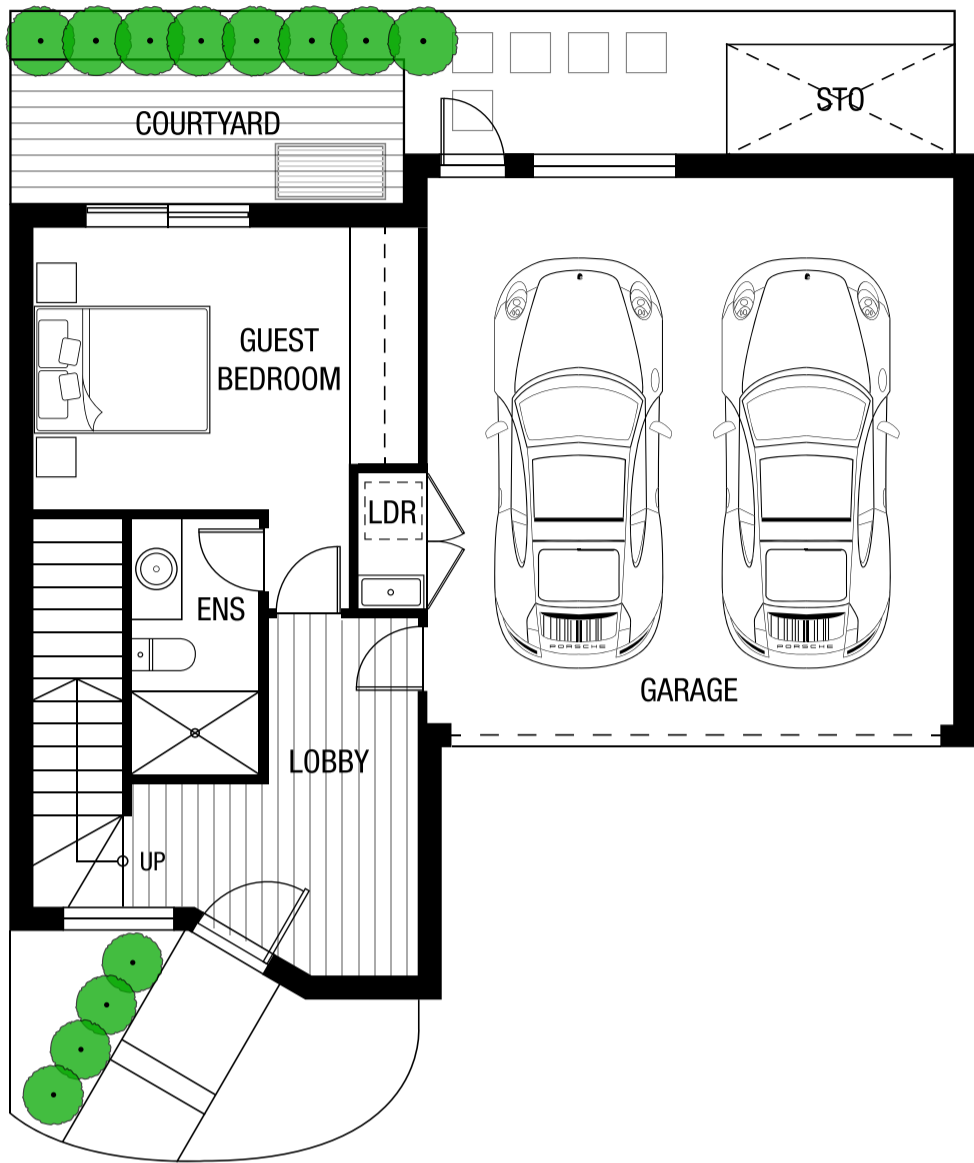
ARDEN

RESIDENCES

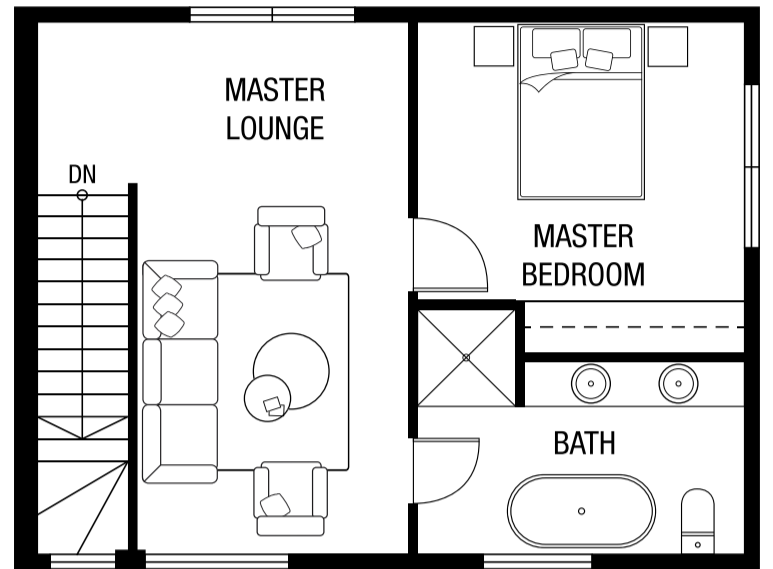
These plans are intended as a guide only. The dimensions and areas are approximate only and may not accurately represent the actual dimensions and areas of the dwellings or the spaces within them and are subject to change without notice. In addition, locations of utilities may vary during construction and fittings and fixtures on these plans are for illustration purposes only. The areas are generally measured in accordance with Property Council of Australia Methods of Measurement. Prospective purchasers must rely on their own enquiries and should refer to the Contract of Sale and its schedules for all matters to be included in the purchase price, of the dwelling, including plans, finishes, fittings, appliances and other particulars of sale. Loose furnitures and white goods are not included. Extent of floor finishes may vary. External spaces and landscaping are indicative only.



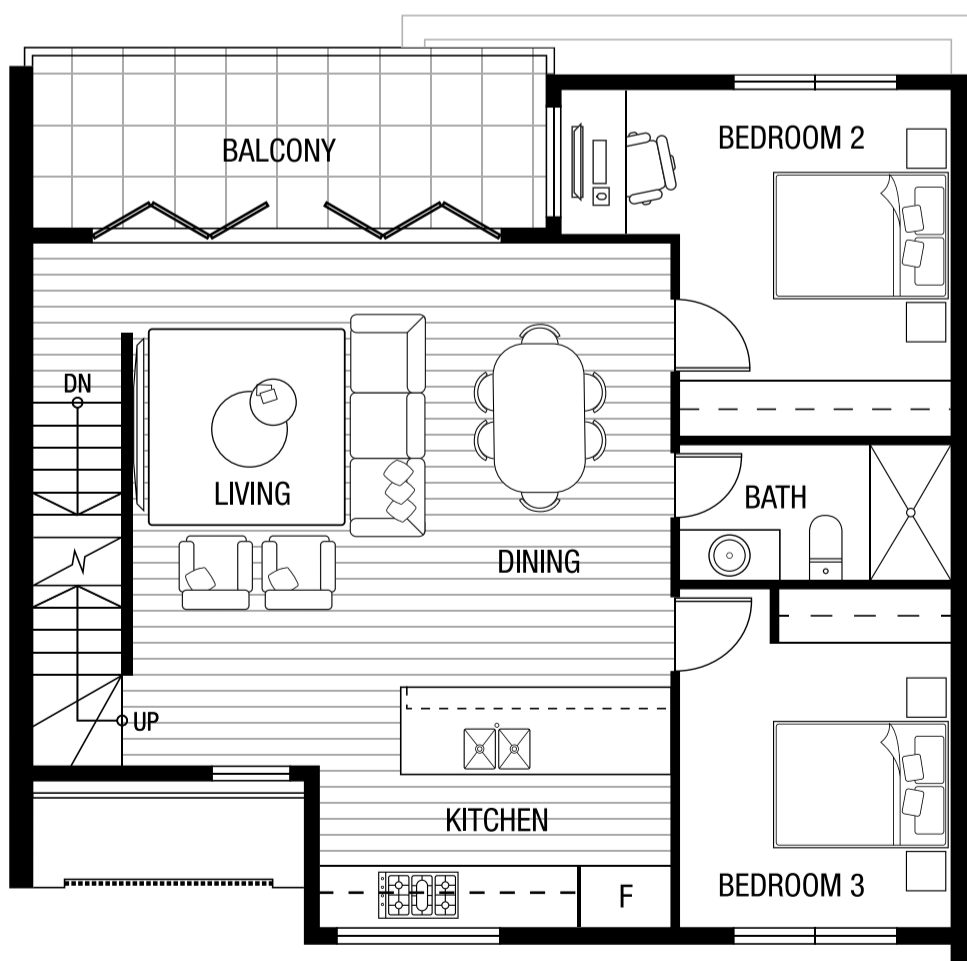
UNIT 3



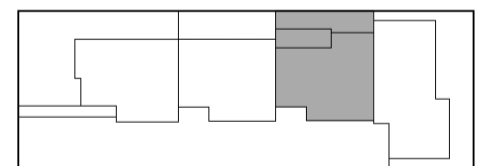
GROUND FLOOR



SECOND FLOOR



FIRST FLOOR



ESTIMATED AREAS

GROUND FLOOR	76.2	M ²
FIRST FLOOR	84.0	M ²
SECOND FLOOR	49.8	M ²
TOTAL INT FLOOR AREA	210.0	M ² (22.6 SQ)
P.O.S.	29.9	M ²

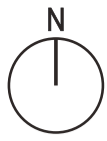


18 AMDURA RD DONCASTER EAST

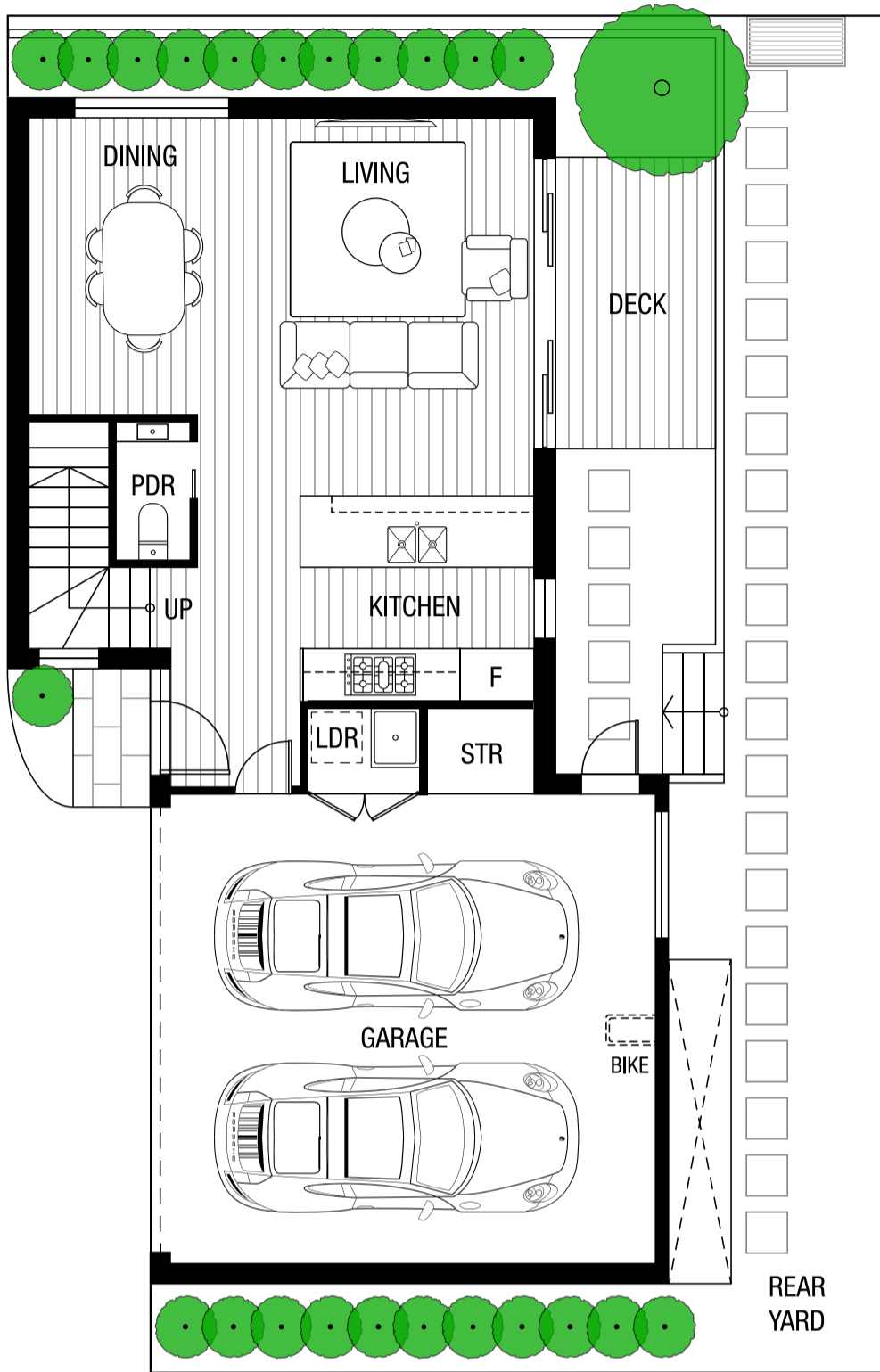
ARDEN

RESIDENCES

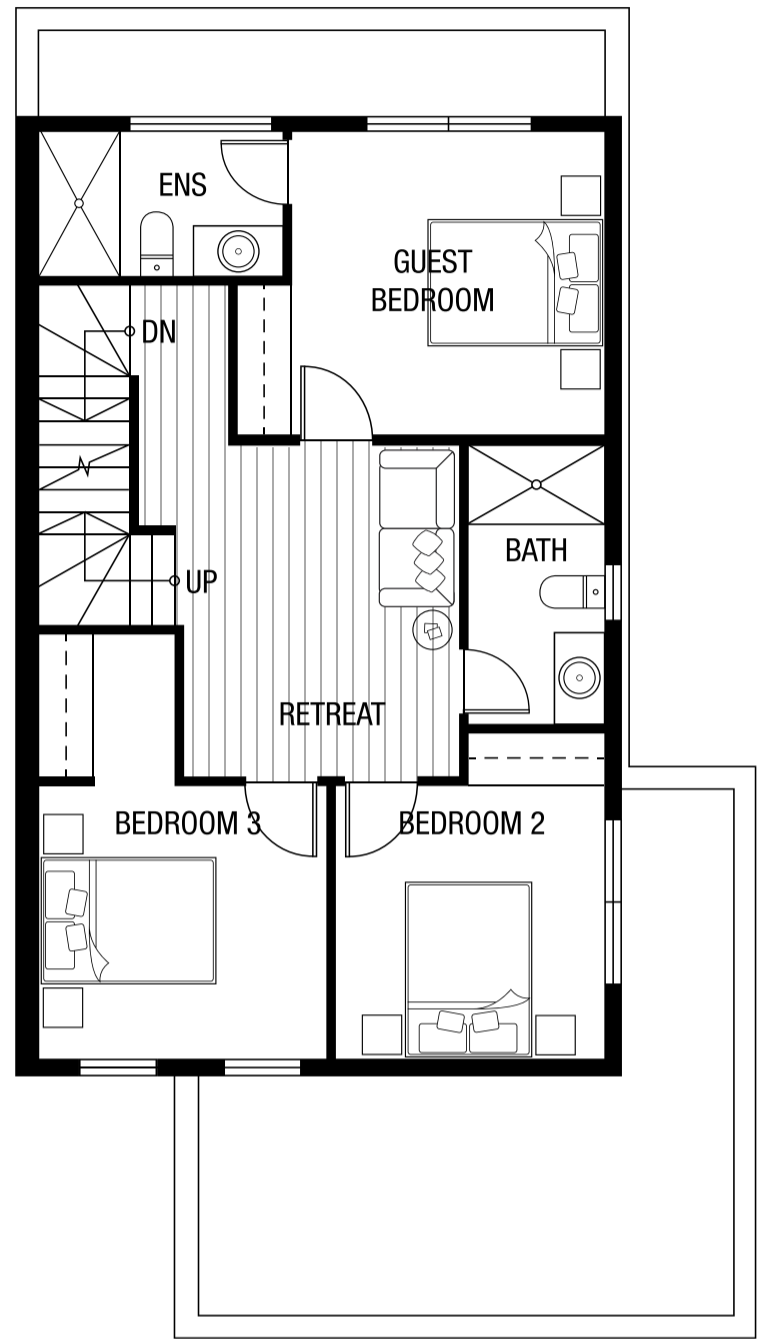
These plans are intended as a guide only. The dimensions and areas are approximate only and may not accurately represent the actual dimensions and areas of the dwellings or the spaces within them and are subject to change without notice. In addition, locations of utilities may vary during construction and fittings and fixtures on these plans are for illustration purposes only. The areas are generally measured in accordance with Property Council of Australia Methods of Measurement. Prospective purchasers must rely on their own enquiries and should refer to the Contract of Sale and its schedules for all matters to be included in the purchase price, of the dwelling, including plans, finishes, fittings, appliances and other particulars of sale. Loose furnitures and white goods are not included. Extent of floor finishes may vary. External spaces and landscaping are indicative only.



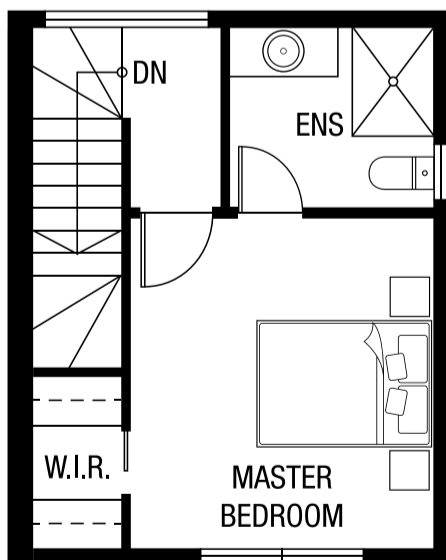
UNIT 4



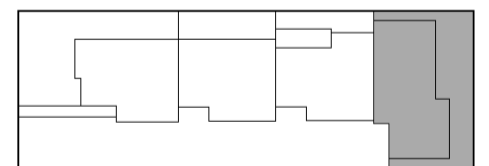
GROUND FLOOR



FIRST FLOOR



SECOND FLOOR



ESTIMATED AREAS

GROUND FLOOR	93.7	M ²
FIRST FLOOR	69.2	M ²
SECOND FLOOR	29.5	M ²
TOTAL INT FLOOR AREA	192.4	M ² (21 SQ)
P.O.S.	70.4	M ²



18 AMDURA RD DONCASTER EAST

ARDEN

RESIDENCES

These plans are intended as a guide only. The dimensions and areas are approximate only and may not accurately represent the actual dimensions and areas of the dwellings or the spaces within them and are subject to change without notice. In addition, locations of utilities may vary during construction and fittings and fixtures on these plans are for illustration purposes only. The areas are generally measured in accordance with Property Council of Australia Methods of Measurement. Prospective purchasers must rely on their own enquiries and should refer to the Contract of Sale and its schedules for all matters to be included in the purchase price, of the dwelling, including plans, finishes, fittings, appliances and other particulars of sale. Loose furnitures and white goods are not included. Extent of floor finishes may vary. External spaces and landscaping are indicative only.