



THE PENTHOUSE COLLECTION

CHESTER & ELLA

| NEWSTEAD, BRISBANE |



THE PENTHOUSE COLLECTION

**CHESTER & ELLA**

| NEWSTEAD, BRISBANE |

KOKODA

---

Founded with a passion for architecture and a proud pioneering spirit, Kokoda Property creates living landmarks of craftsmanship, superior quality and thoughtful design. In just 22 years our award-winning luxury residences have made the Kokoda Property name synonymous with quality and style, cementing our reputation as one of Australia's most respected developers.

**KOKODA**  
PROPERTY

# ADDRESSES OF DISTINCTION

Defined by award-winning design, superior quality and proud heritage, Kokoda Property creates luxury residences in Australia's most desired locations.

---

## THOUGHTFUL, AWARD-WINNING DESIGN

We seek out the nation's premier locations and create bespoke residences to match, both in design and style. Offering unrivalled lifestyle and luxury, our homes live up to our promise, receiving multiple industry awards for design excellence.

## SUPERIOR QUALITY & CRAFTSMANSHIP

Our standards are as high as yours. Every touch point of a Kokoda Property residence is carefully considered and cleverly designed. With meticulous attention to detail and luxury inclusions as standard, we aim to exceed your expectations every time.

## BESPOKE, PERSONAL SERVICE

We understand that buying a new home is one of life's most significant investments. Kokoda Property is with you every step of the way to make the journey simple and seamless, and help you personalise your residence to suit your individual style.

## PROUD HERITAGE IN LUXURY

We began 18 years ago, building luxury homes in Melbourne's most elite suburbs. Today our philosophy remains unchanged and our finished product serves as our proud legacy. Every Kokoda Property residence represents an unfaltering commitment to quality.

## HOMES YOU'LL LOVE LIVING IN

Our ultimate satisfaction comes from creating homes you'll adore, inside and out. Where style and lifestyle meet in perfect harmony and happiness is effortless. Proven, trusted and respected, Kokoda Property creates homes that are not just livable, but lovable.

---

*where worlds collide*

**CHESTER & ELLA**

| NEWSTEAD. BRISBANE |

THE PENTHOUSE COLLECTION

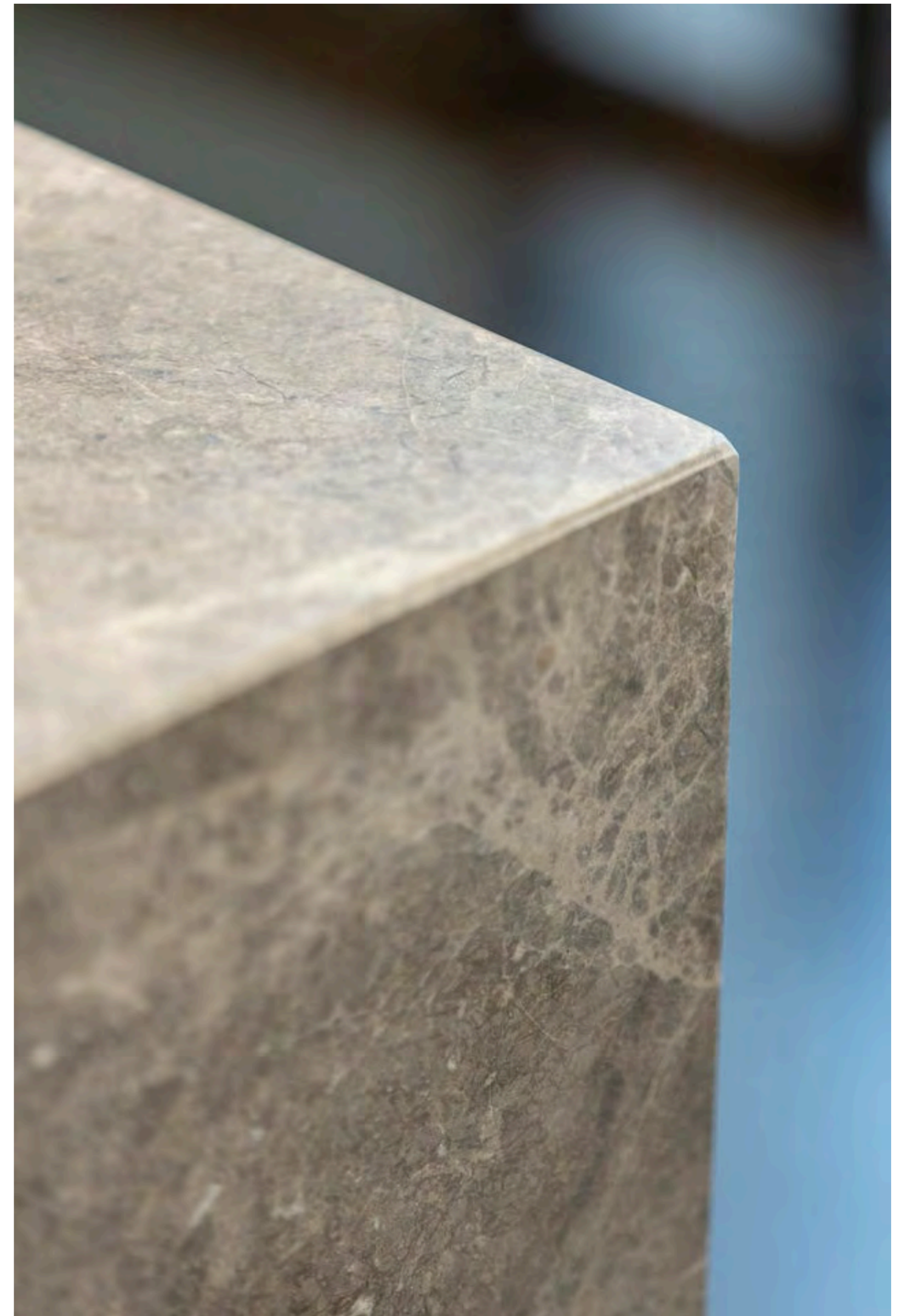


**NATURAL HIGH**

For your eyes only. Match your favourite Pinot Noir with Brisbane's finest view. Floor to ceiling windows perfectly frame the panorama. Opulent Herringbone oak flooring adds a rich warmth with optional feature fireplace igniting the evening ahead.

Keep the vista all to yourself, or share the wonder with treasured guests from your oversized terrace. Enjoy the natural high that comes with living life at the top.





PLAT DU JOUR

Culinary explorations and decadent degustations. Proportioned for the professional, your kitchen's subtle aesthetic conceals chef-standard functionality. Slick timber inspired cabinetry, floating marble benchtop and an abundance of storage set the style scene.

Miele appliances including double wall oven, induction cooktop, microwave, dishwasher and integrated Liebherr double fridge wait patiently for gastronomic inspiration to take hold.

GREEN WITH ENVY

A decadently sized playground where inside becomes out with just a simple slide of your doors. The sun goes down on yet another beautiful day, and your stylish soirée heats up with the promise of a magical night.

An outdoor kitchen with barbecue makes alfresco entertaining effortless. Stone paving and sub-tropical landscaping enhance the luscious ambience.

Guests mingle on the expansive terrace, sweet music sets the mood and your optional plunge pool is the perfect temperature for a late night dip under the stars.





THE GREAT BEAUTY

Private and privileged. This is luxury redefined. Low maintenance living reaches grand proportions, with impressively high ceilings and understated sophistication. Juxtaposing the beauty of nature's most luxurious materials with a meticulous attention to craftsmanship, the Penthouse Collection sets a sumptuous mood with refined modernity.



## CURATED CALM

### SURRENDER TO SIMPLICITY

Artistic influences infuse your bathroom with chic simplicity. The sculptural free-standing dual tone bath is an exquisite centerpiece. Luxuriate and emerge transformed.

Contemporary design excels with everyday amenities concealed behind a feature wall of crisp white penny round tiles. 60mm marble oozes opulence, oversized tiles rise floor to ceiling, and delicate touches of black magic complete the masterpiece.





MAKE AN ENTRANCE

The grand lobby beckons. You've arrived. A subtle warmth where considered details relax your senses and make you feel instantly at home. Custom lighting disarms, Herringbone oak flooring enhances the ambience and soaring ceilings create a serene space.

Hayball have collaborated with Ministry of Design Singapore to create the grand entrance Chester and Ella deserves, with Concierge for convenience, lounge for luxuriating and art to inspire.

### IGNITE APPETITES



### AFTER DARK

Smoked Kingfish with fennel. Darling Downs Wagyu with truffled mash. Valrhona chocolate ganache with fresh fig. Hosting a decadent dinner party for twenty of your closest friends is a refined affair in Level 5's private dining room and show kitchen.

Leave the behind the scenes operations to the experts. Your Concierge will engage the personal chef and catering team to ensure your special occasion is seamless while you ensure the conversation scintillating.



### ENTERTAIN THE POSSIBILITY

Intimate or epic private functions exclusively for residents, can be held right at home. Designed by award winning Ministry of Design, the event precinct on Levels 4 & 5 offers unrivalled hotel style access without leaving the building.

Reserve the whole level, or select an individual space to suit your soirée, through the Concierge. Unified by a bespoke sculptural spiral staircase, the precinct takes lavish amenities to a whole new level.



SUMMER DAZE

Welcome to paradise. Ella's poolside retreat is an urban rooftop oasis. Catering for every want, this exquisite escape features a swimming pool and spa for rejuvenating, and outdoor cinema for moonlight movie magic. Sun loungers and secluded spots to relax are perfectly positioned to capitalise on the panoramic views and stunning sunshine.



**SOAK IT UP**  
Say hello to a new dawn with a rejuvenating dip in the swimming pool and spa on Level 18. A place for solo escapism or to share with close friends. Settle in for sun-drenched skies and inspiring views.

Hotel luxuries come standard. As a connoisseur of cool, you deserve an unparalleled wealth of exclusive amenities and Concierge to look after life's little details.

**CONCIERGE HOURS OF OPERATION**  
*Monday to Friday 7am-8pm, Saturday and Sunday 9am-5pm*

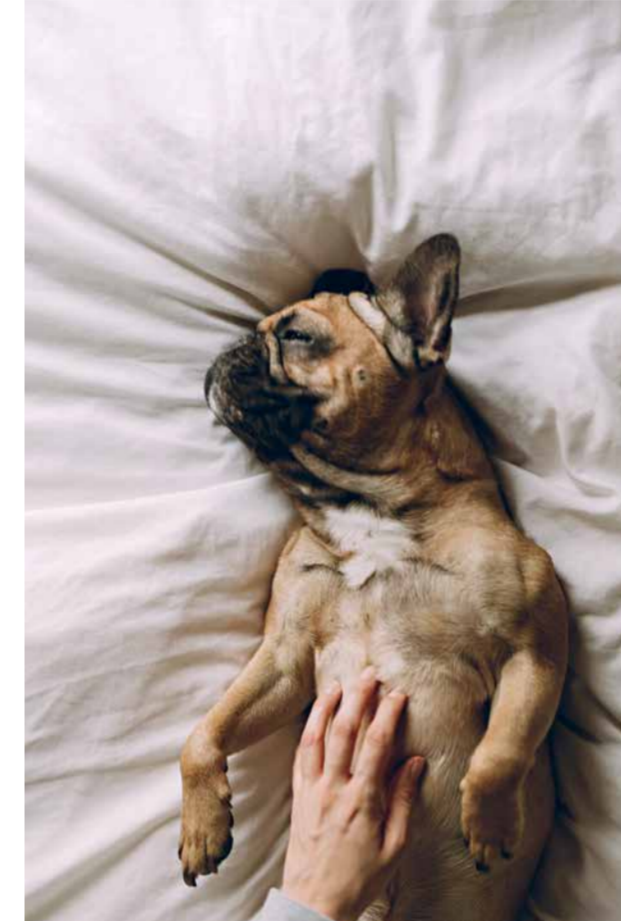
# A LIFE LESS ORDINARY



**ARRIVE IN STYLE**  
Pit stops from A to B. Road trips from city to coast. Your Concierge can organise suitably impressive transportation to get you there in style.



**DO NOT WASH**  
From delicates to your favourite denim, your Concierge can organise your laundry to be dry-cleaned, washed or pressed and returned inside your door. Your Concierge can also escort your preferred cleaners to your residence in your absence, so your home looks equally beautiful.



**DOG DAY AFTERNOON**  
The royal treatment extends to your four-legged friends. Your Concierge can organise dog walking services for your pampered pooch, along with pick-ups and drop-offs. Pats come complimentary.



**EYE ON THE BALL**  
Settle the score with a game of billiards on Level 4, or move out to Level 4's terrace for table tennis. Perfect your putt on Level 18's rooftop putting green or kick back watching the game in the private theatre room.



**STAND AND DELIVER**  
Limes for your margaritas, fresh flowers for the table, or that little late night net-a-porter.com session. Allow your Concierge to take delivery of all your precious items and online purchases (we won't tell anyone).



**DINNER PARTY, SANS DRAMA**  
Let your Concierge engage the personal chef and catering team to cater your next big celebration or intimate gathering in the Level 5 dining room and kitchen.



**LET SPARKS FLY**  
Settle into the evening fireside on Level 4's outdoor opulent terrace. An intimate lounge with central fire pit will mesmerise as your tales are told and magic unfolds.

Please refer to the Management Engagement and Letting Authorisation Agreement (the Management Agreement) for all standard concierge services included within the body corporate levies. Additional services (such as arranging transportation, laundry, dry cleaning, dog walking, car washing, personal trainer, event planner and personal chef) can be requested by residents and will be charged as an additional cost to the requestor. Information contained in the Management Agreement is subject to change without notice. Concierge onsite hours of operation are Monday to Friday 7am-8pm, Saturday and Sunday 9am-5pm. Hours are subject to change.

# HOT

IN THE CITY

## BRISBANE, AUSTRALIA

A rising metropolis. A sun-drenched stage. Locals know her secrets and international guests are drawn to uncover them. The enviable climate, vibrant arts scene and freshest of flavours fuse with historic charm, and life moves at just the perfect pace.

Every palate, whim and want is catered for. Elite universities, globally revered restaurants and the unparalleled outdoor lifestyle are here waiting for you. Relax, celebrate and prosper when you call Australia's most in-demand city home.

This is Brisbane.





# CHESTER & ELLA



| BRISBANE |  
CRICKET GROUND  
'THE GABBA'

| KANGAROO POINT |

| BOTANIC  
GARDENS |

| STORY BRIDGE |

| NEWSTEAD, BRISBANE |

BRISBANE CBD

JAMES ST PRECINCT

FORTITUDE VALLEY

EMPORIUM  
PRECINCT

NEWSTEAD

GASWORKS PLAZA

TENERIFFE

TENERIFFE  
WOOLSTORE  
PRECINCT

BRISBANE RIVER

## PRIME POSITION



THE WORD



Guilt-free pleasures **NODO DONUTS**

l o c a l  
l o v e

MAKE YOUR MOVE

Beyond your front door a world of wonder awaits. Infused with energy and eclecticism, Newstead and its neighbours serve up cool on every corner. Start with a guilt-free pleasure at Nodo. Gluten-free of course. Meet your entourage for brunch at King Arthur and plan the night's adventures (and your outfit to match). A sleek silhouette from Gail Sorronda pared back with a glittering sunset at Eleven. Just perfect.



Toast of the town **ELEVEN ROOFTOP BAR**



James Street fashionista **GAIL SORRONDA**



Brunch royalty **KING ARTHUR**



**BE THERE IN 5**

FIRST ROUND'S ON ME

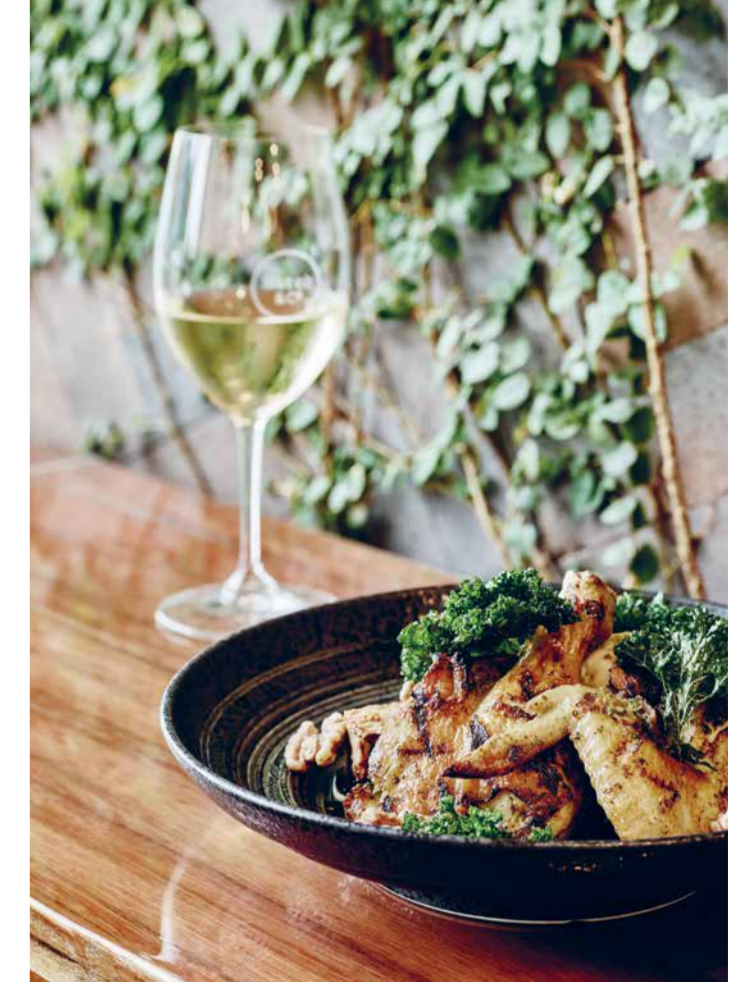
INSIDER TRADING

Ales are chilled and the Newstead Brewery is hot and humming. Enjoy the boast worthy rights that come with a brewery just a block away, and arguably Brisbane's best burger at Ben's on the flip side.

Close deals and toast your wins at Tartufo, the Italian with a big heart and an even bigger bar. Dress the part in designer threads from Nudie and hatch new strategies for success at Hatch & Co. Chester certainly knows how to mix business with pleasure.



A quick pint **NEWSTEAD BREWING CO.**



Eat your greens **HATCH & CO**

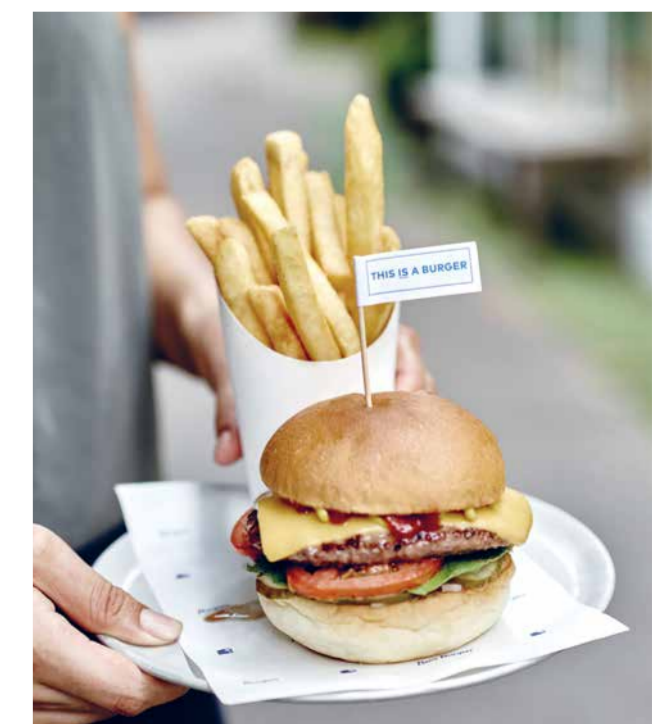
t h e  
h o o d



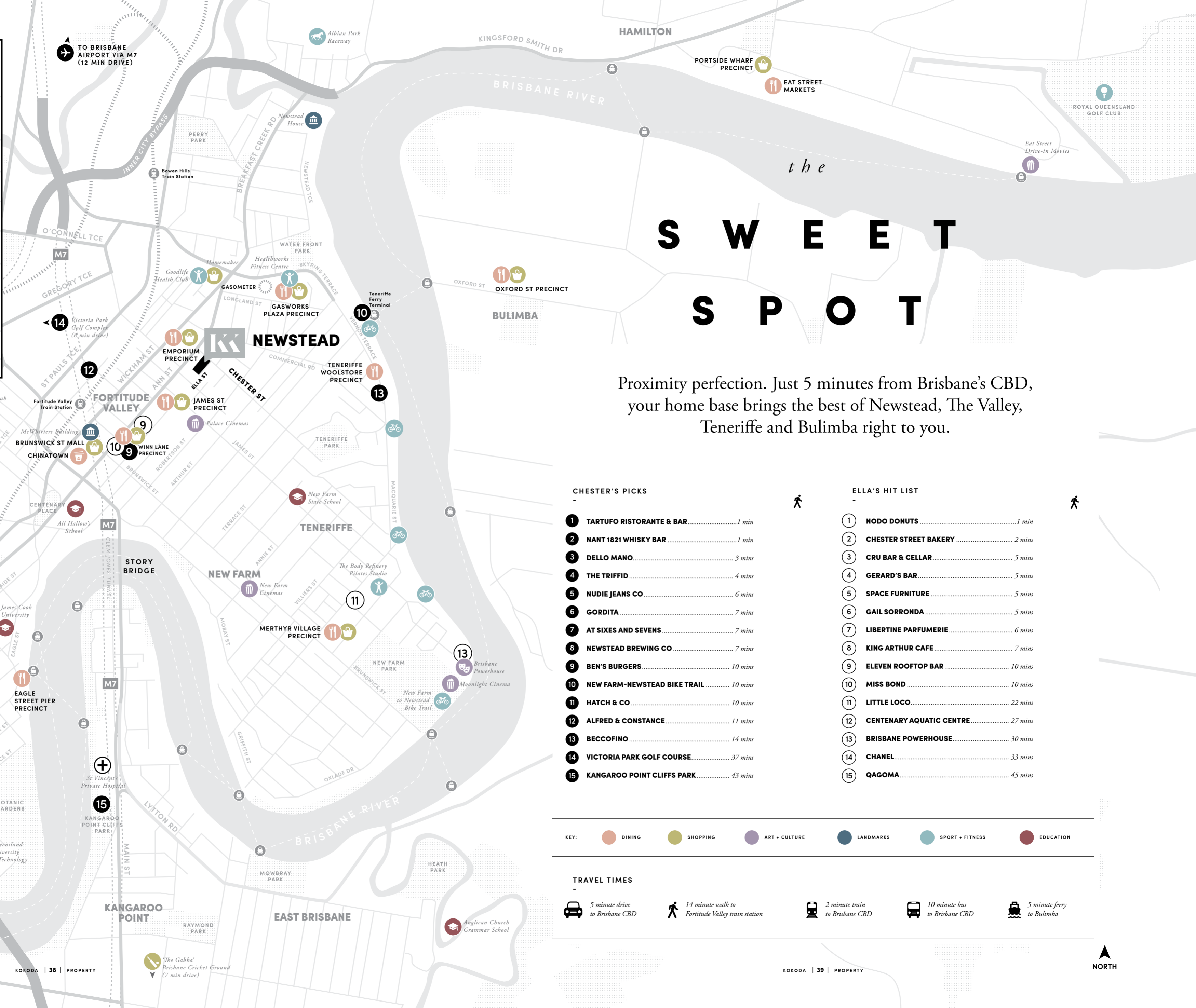
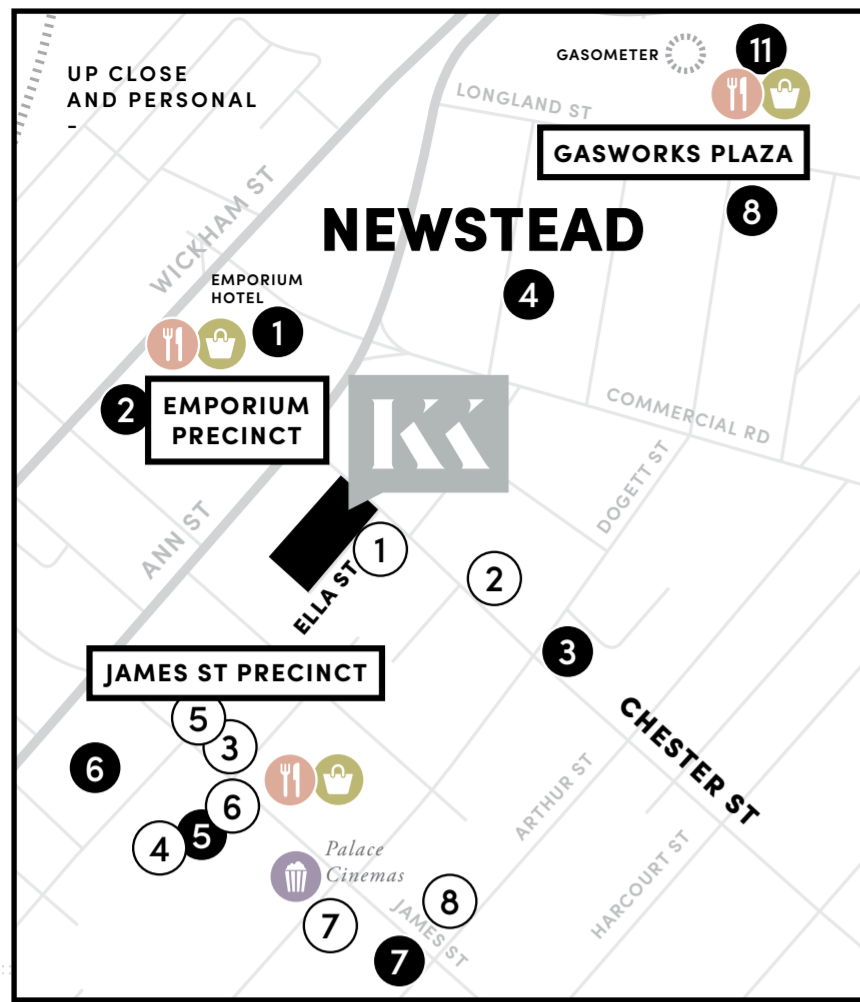
Business at the bar **TARTUFO**



Blue jean baby **NUDIE JEANS CO**



Killer burgers **BEN'S BURGERS**



# the SWEET SPOT

Proximity perfection. Just 5 minutes from Brisbane's CBD, your home base brings the best of Newstead, The Valley, Teneriffe and Bulimba right to you.

### CHESTER'S PICKS

- 1 TARTUFO RISTORANTE & BAR ..... 1 min
- 2 NANT 1821 WHISKY BAR ..... 1 min
- 3 DELLO MANO ..... 3 mins
- 4 THE TRIFFID ..... 4 mins
- 5 NUDIE JEANS CO ..... 6 mins
- 6 GORDITA ..... 7 mins
- 7 AT SIXES AND SEVENS ..... 7 mins
- 8 NEWSTEAD BREWING CO ..... 7 mins
- 9 BEN'S BURGERS ..... 10 mins
- 10 NEW FARM-NEWSTEAD BIKE TRAIL ..... 10 mins
- 11 HATCH & CO ..... 10 mins
- 12 ALFRED & CONSTANCE ..... 11 mins
- 13 BECCOFINO ..... 14 mins
- 14 VICTORIA PARK GOLF COURSE ..... 37 mins
- 15 KANGAROO POINT CLIFFS PARK ..... 43 mins

### ELLA'S HIT LIST

- 1 NODO DONUTS ..... 1 min
- 2 CHESTER STREET BAKERY ..... 2 mins
- 3 CRU BAR & CELLAR ..... 5 mins
- 4 GERARD'S BAR ..... 5 mins
- 5 SPACE FURNITURE ..... 5 mins
- 6 GAIL SORRONDA ..... 5 mins
- 7 LIBERTINE PARFUMERIE ..... 6 mins
- 8 KING ARTHUR CAFE ..... 7 mins
- 9 ELEVEN ROOFTOP BAR ..... 10 mins
- 10 MISS BOND ..... 10 mins
- 11 LITTLE LOCO ..... 22 mins
- 12 CENTENARY AQUATIC CENTRE ..... 27 mins
- 13 BRISBANE POWERHOUSE ..... 30 mins
- 14 CHANEL ..... 33 mins
- 15 QAGOMA ..... 45 mins

KEY:

<span style="color: #e67e22;">●</span> DINING	<span style="color: #27ae60;">●</span> SHOPPING	<span style="color: #9b59b6;">●</span> ART + CULTURE	<span style="color: #34495e;">●</span> LANDMARKS	<span style="color: #3498db;">●</span> SPORT + FITNESS	<span style="color: #c0392b;">●</span> EDUCATION
---	---	--	--	--	--

### TRAVEL TIMES

- 5 minute drive to Brisbane CBD
- 14 minute walk to Fortitude Valley train station
- 2 minute train to Brisbane CBD
- 10 minute bus to Brisbane CBD
- 5 minute ferry to Bulimba



ARCHITECTURE & INTERIOR DESIGN

Hayball is one of Australia's largest practices specialising in architecture, interior design and urban planning. Over 30 years, they have created hundreds of projects across Australia, South-East Asia and China – from single and multi-residential buildings to schools and universities, commercial developments and urban design for entire suburbs.

Hayball creates outstanding buildings that enrich the lives of occupants with a sense of individuality, flexibility and enjoyment. Integrating architecture, interior design and urban design, Hayball specialises in stitching new projects into the existing urban fabric with emphasis on an architectural response that contributes to an area's vibrancy and character.

hayball



Neo 200 MELBOURNE



Bravo Apartments CARLTON, MELBOURNE



Bravo Apartments CARLTON, MELBOURNE



Macalister Mansion PENANG, MALAYSIA

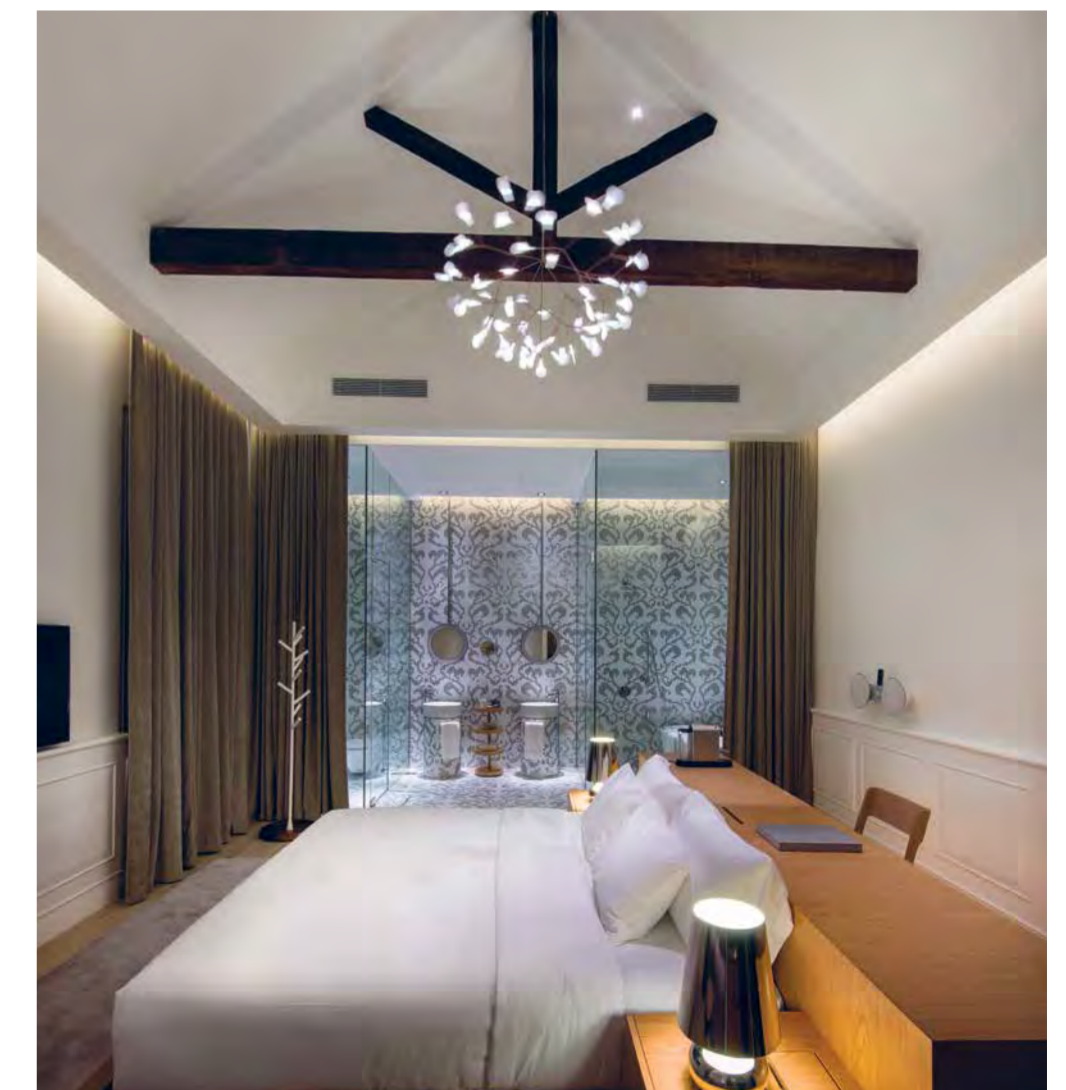
INTERIOR DESIGN

Headquartered in Singapore, Ministry of Design was created by Colin Seah to question, disturb and redefine spaces, forms and experiences that surround us and give meaning to our world. Declared a "Rising Star of Architecture" by the Monocle Singapore Survey 2010, MOD won the prestigious "Designer of the Year" by the International Design Awards, USA 2010.

An integrated spatial-design practice, MOD's explorations are created amidst a democratic atmosphere and progress seamlessly between form, site, object and space.

MOD begin each distinct project anew by seeking to do two things – draw deeply from context and dream freely to transcend convention. Each MOD project strives to be delightfully surprising, relevant, distinctly local but with true global appeal.

MINISTRY OF DESIGN



Macalister Mansion PENANG, MALAYSIA

Kokoda Property has partnered with renowned architectural and design industry greats to deliver unparalleled vision, superior quality and craftsmanship.

# CHESTER & ELLA

| NEWSTEAD. BRISBANE |

Cnr Chester Street and Ella Street,  
Newstead, QLD 4006, Australia

[KOKODAPROPERTY.COM.AU](http://KOKODAPROPERTY.COM.AU)

Information, dimensions and specifications herein are subject to change without notice and descriptions provided may not be applicable to every lot within the development. No responsibility is accepted by the seller or its agents for any other information contained herein or for any action taken in reliance thereon. Illustrations, architectural and artist impressions are indicative only. Pools depicted are for illustrative purposes only and are sold pursuant to an optional upgrade selection under the contract of sale. Furniture shown is for illustrative purposes only and is not included with the property. Whilst all information in relation to this development has been prepared with the utmost care and attention to its accuracy, no warranty can be given and therefore interested parties should rely on their own enquiries. This brochure does not form part of, and is not, an offer or a contract of sale.



