

The cornerstone of Burleigh
beachfront since 1930

—







Once a destination for elaborate soirees, classic films and community dances alike

The Old Burleigh Theatre Arcade is an enduring landmark for this coastal oasis. After decades of indulgent and opulent gatherings, De-Luxe is reimagining its well-told chapters to present a new epoch.

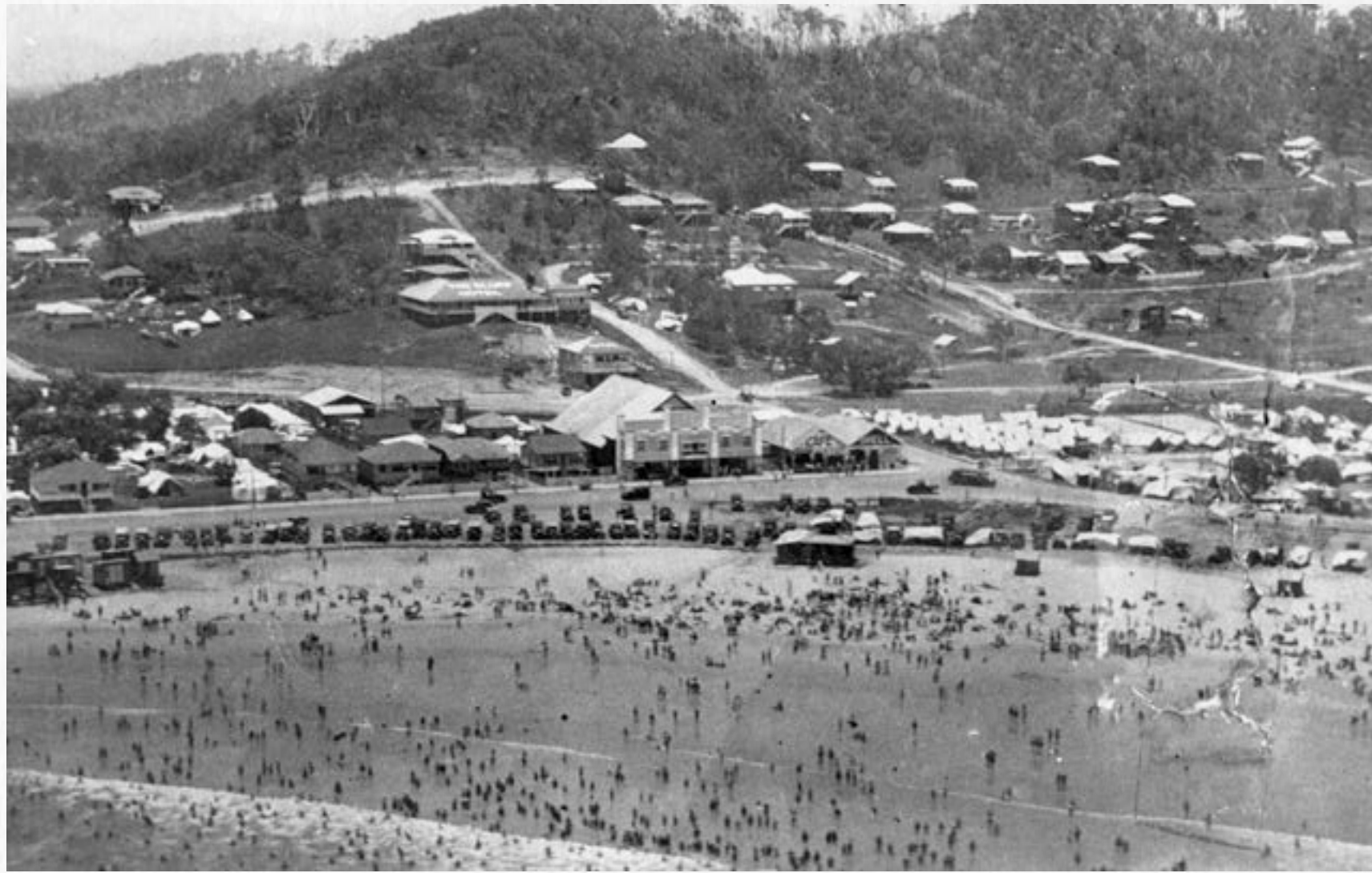


A story nearly a century in the making

—

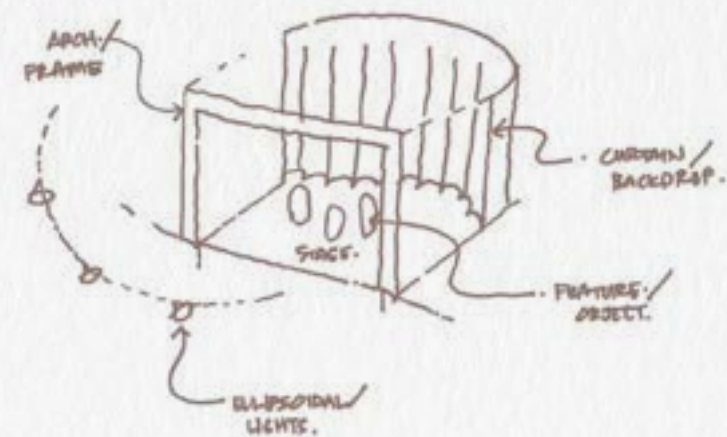
A man by the name William Fradgley arrived at Burleigh Heads in 1917, where he leased a site on the corner of Connor Street and the Gold Coast Highway to build an open-air theatre. His passion project attracted crowds from the very beginning, but it was when he relocated to Goodwin Terrace and transformed the idea into De-Luxe - a modern picture theatre and dance hall - that he really captured attention. The cinema's first 'talkie' screening on 9 September 1931 was the turning moment for something that would grow in a big way over the next 90-something years.





For the love of theatre

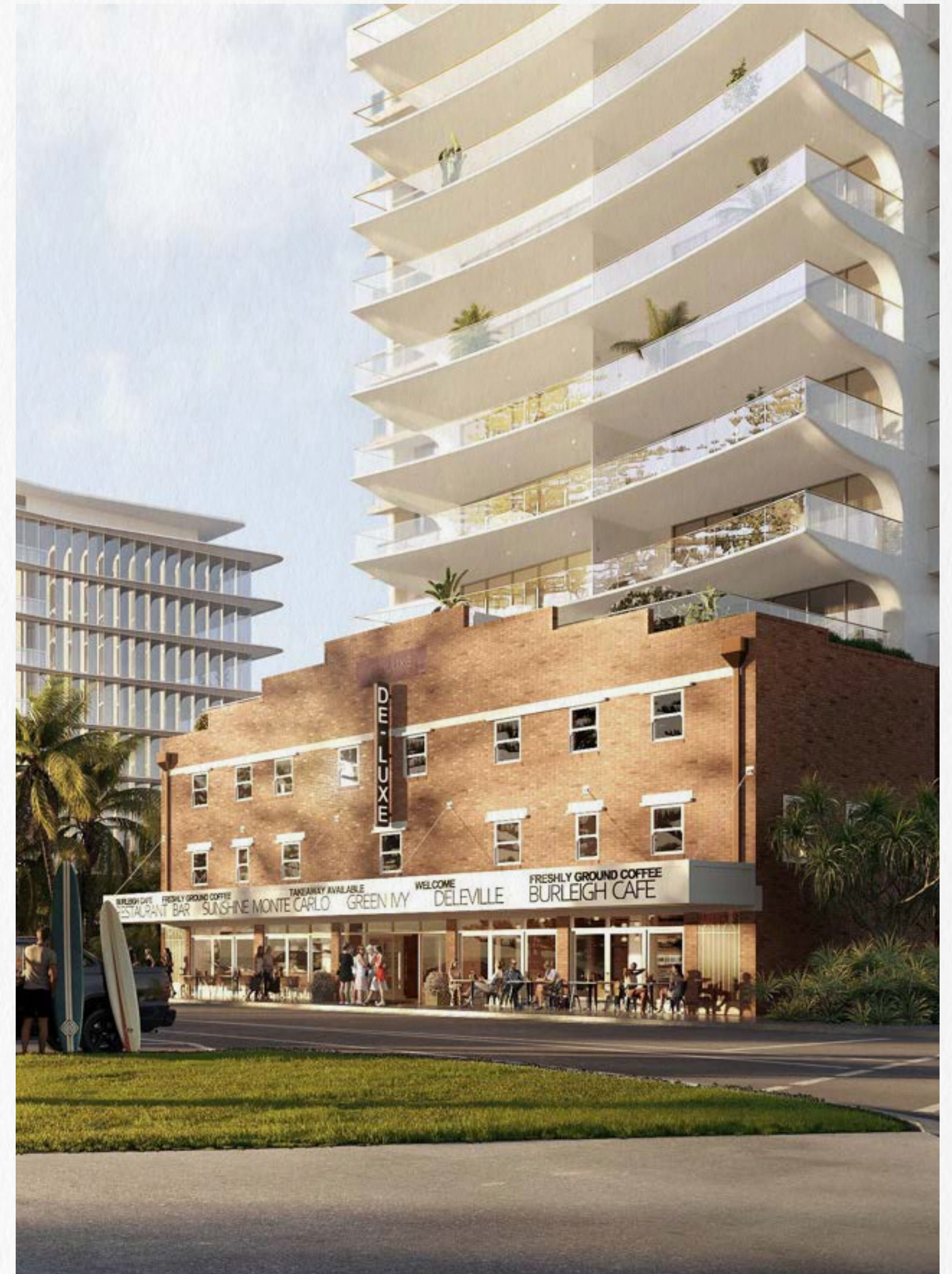
While this enduring chapter came to a close with the final screening of *The Circus World* in 1966, the physicality informed an evolution of the site. The arch and framework are an ode to the nostalgia of evenings spent at the pictures, with ellipsoidal lights to maintain the sense of Hollywood-like glamour. The curtain backdrop that runs up the back of the building is a reminder that this reimagination isn't the end of a story, but the next chapter of the much-loved narrative.



A theatrical fusion of old and new

—

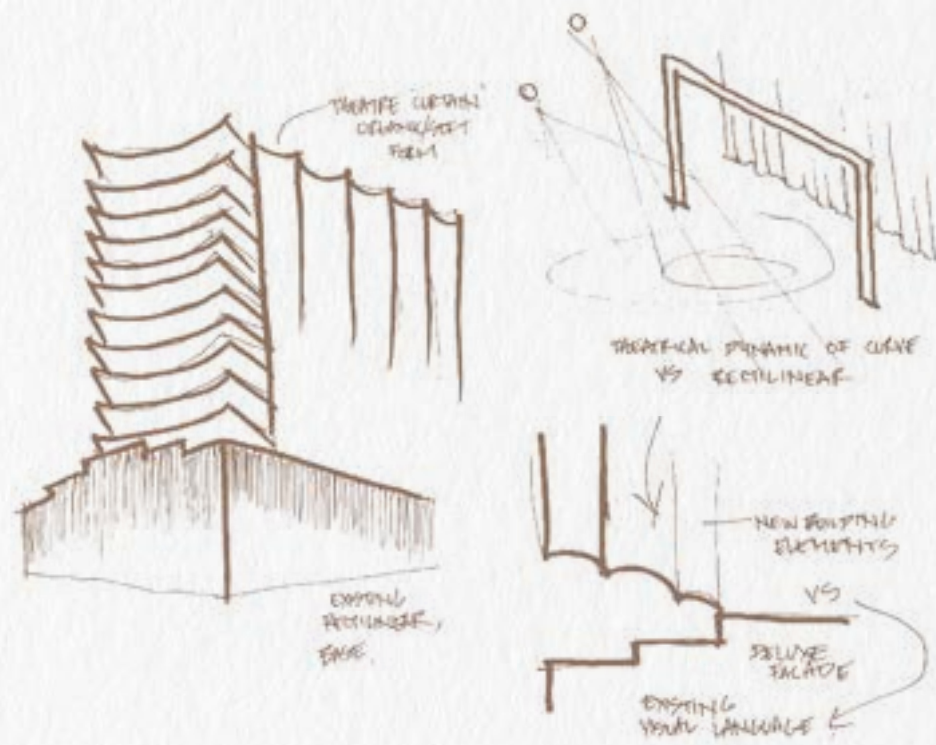
Veering away from the rectangular architecture of the Gold Coast locale, the new epoch of De-Luxe embraces a theatrical curve - both inside and out. The curtain-like waves of the reimagined component of the building blends against the rich red brickwork and brass hues of the original De-Luxe facade. When combined with the restored De-Luxe signage, concertina timber-framed doors and crowning terraced steps, this regal legacy will endure for years to come.



An innovative legacy

—

This fusion of old-world grandeur and modern sophistication was the result of a carefully crafted vision. The coveted team of industry-leading thinkers took the fabric of a celebrated landmark and used its attributes as the guidance for a shrewdly crafted new concept. Architecturally ingenious, contextually rich and tailored for the world of tomorrow, De-Luxe sets a new benchmark.





De-Luxe is defined
by the richness in
its surrounds

—

Where ocean meets verdant greenery,
world class surf meets delectable
dining, and local markets meet
boutique stores – De-Luxe is nestled
in the heart of it all. Whether you're
admiring the landscape from afar,
indulging in artisan eats or sipping
on afternoon refreshments, it's an
enviable way of life.







For moments of connection and contemplation

—
At ground floor, a well-appointed collection of retail and dining options is complemented by an inspiring gallery, with each artwork an ode to an era gone by. The community energy flows seamlessly through the space, with opportunities to relax, indulge and gather in abundance.







Enhance everyday restoration

—
The elevated De-Luxe pool deck is the epitome of coastal sophistication. This residents-only sanctuary is a haven to indulge in the idyllic location. Set against a backdrop of uninterrupted ocean views, it's a place to enjoy a sun-drenched dip, unwind in lush surrounds or come together in the entertaining area.







De-Luxe embraces sophisticated accents and curated details from the very first moment of arrival.

—



The Developer

At Weiya Holdings, we're on a mission to curate a legacy that redefines the standards in our industry, pioneers new opportunities for our clients and creates meaningful residential spaces. We're known for doing things differently, but it's our innovative flair that makes every project we deliver synonymous with excellence.

Based in Sydney, our portfolio showcases premium residential developments across Australia. Our team brings together some of the industry's most coveted minds, with each professional showcasing unique skills, perspectives, and experiences. We draw on this fabric of knowledge to approach every project with an innovative mindset, allowing us to continually reimagine the possibilities for property development.



The Architect

To each project, Conrad Gargett brings unrivalled vision, innovative design and world leading expertise built upon their vibrant legacy of creating award-winning architecture and design for over a century. The breadth and depth of their experience is evidenced in their rich global portfolio, which showcases over 130 years of diverse projects varying in scale, industry and complexity.



The Interior Designer

Conrad Garget Interiors inherent curiosity, collaboration, exploration and research allows them to explore the end users needs and aspirations to provide innovative and informed solutions. They are provide interior solutions that enhance connectivity, provide innovative social infrastructure and foster community.

Proudly developed by



Important legal disclaimer: Photos, images, views and diagrams are indicative only and subject to change without notice. The developer and entities related to it and their employees, officers and agents do not represent or warrant the accuracy or completeness of the information, images or illustrations and do not accept liability for any error or discrepancy in the context of this brochure. Design and features subject to change without notice. Not all apartments will have the same views as depicted. The information, images and illustrations displayed in this brochure will not form part of any contract of sale. Interested parties must rely on their own enquiries and advice and the information in the contract of sale for the development.

Historic images courtesy of State Library of Queensland and City of Gold Coast Libraries Local Studies Collection



DELUXEBURLEIGH.COM.AU