



SINCE 1912

THE REVY

DARLING ISLAND



An inspiring past, your glorious future



The Revy is a landmark on the harbour—and a new benchmark for living in Sydney.

Historically significant, this stately redbrick building is being converted into just 44 unparalleled residences.

Crowning its eight storeys, a rooftop terrace affords unobstructed views over the harbour.

Uniquely, every home spans the building's entire width. High ceilings, tall windows and an east-west orientation ensure abundant natural light throughout the day.

These luxury freehold apartments—with two, three or four bedrooms—offer a variety of configurations that enable owners to find their ideal layout.

Situated right on the wharf at Darling Island—just metres from the harbour—the setting is tranquil and secluded, yet only a short walk from the CBD across the Pyrmont Bridge.

*

*Such an opportunity comes
along once in a generation*

Darling of the Island



The Revy is nestled on a promontory on Darling Island, overlooking its own wharf running along Jones Bay. With its waterfront setting, the statuesque building is a Sydney Harbour landmark, visible from points all around.

The magnificent rooftop terrace overlooks sensational panoramic views of Sydney Harbour including the iconic Harbour Bridge to the north. Looking east, the CBD skyline reminds you how accessible the city's commercial heart is, while the restaurants, bars, cafés and shops of the Barangaroo and Darling Harbour precincts are just a short walk across the Pyrmont Bridge.

To the west lie the leafy suburb and parks of Pyrmont, which combine with the harbour to create a truly secluded feeling. Yet just a few minutes' stroll from the building, the recently upgraded Star Casino offers a luxury day spa, extensive fine dining and nightlife.

Owners at The Revy enjoy the convenience of underground parking with direct lift access. The whole area is also well served by transport including the light rail network and ferries from Pyrmont Bay, a five-minute walk away, and water taxis to Circular Quay and elsewhere, which can pick you up from your doorstep.

*

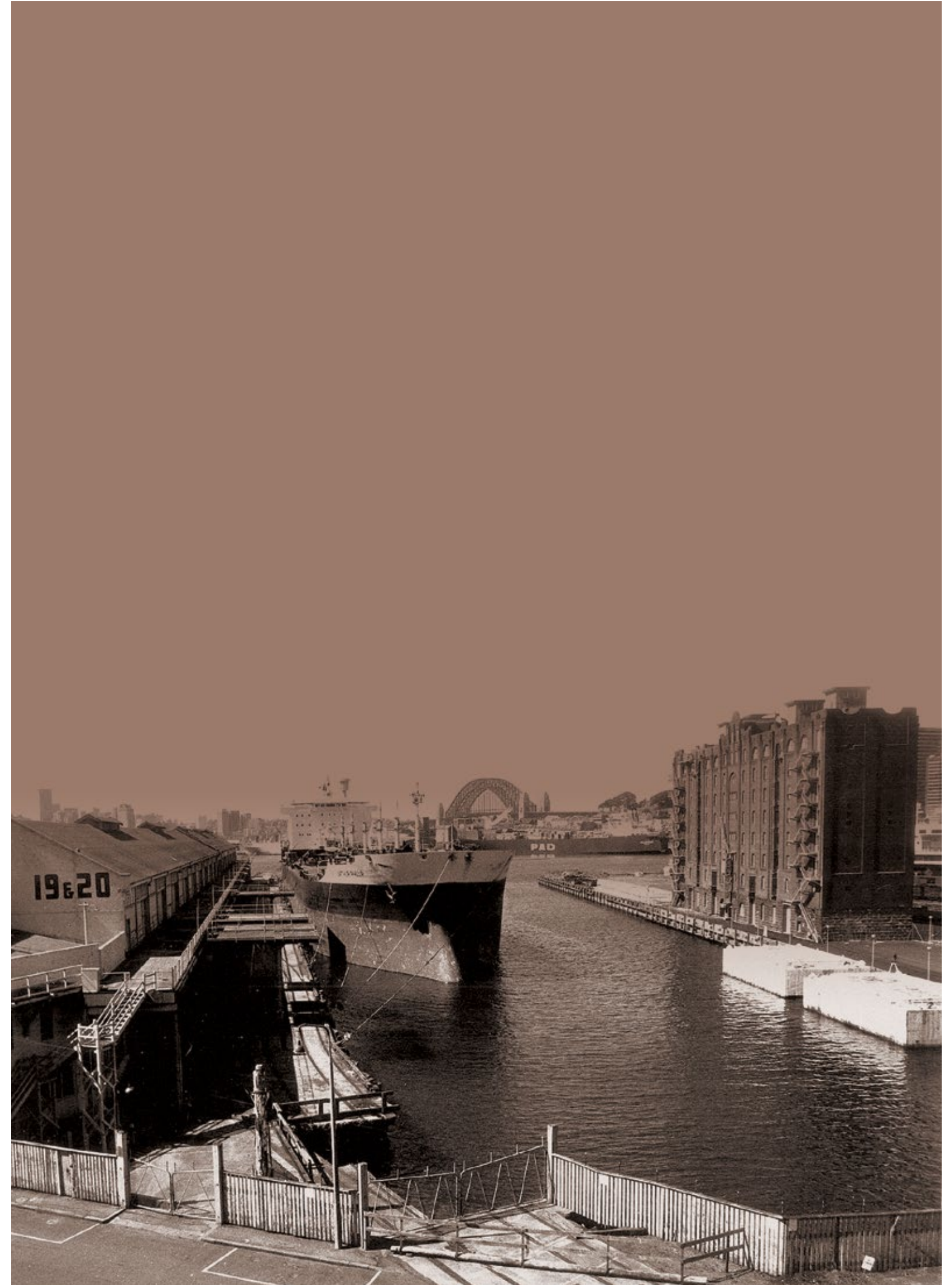
*With its waterfront setting,
the statuesque building is a
Sydney Harbour landmark*

Stand outside The Remy and inhale the glorious tang of the sea, and you can almost hear the echoes of the past





*The Renvy is nestled on a promontory
on Darling Island, overlooking its own
wharf running along Jones Bay*



Photograph by Alan Croker



Proudly serving a fledging nation

The story of Sydney is inextricably linked with the ocean, the nation's jewel of a natural harbour and, perhaps surprisingly, with the Royal Navy—first British, then Australian.

The prime global city we know today, the country's most populous, was once little more than an outpost for the British Royal Navy to preserve the Crown's regional interests and defend the colony itself. Keeping a fleet and its crews prepared for battle required essential food and other provisions, known as 'victuals', to be properly stored and readily available.

Naval depots provided a vital lifeline, equipping men and their vessels for ventures far and wide. In an era before refrigeration, these buildings required superior construction and the optimal location for operational success.

On January 1, 1901, the six colonies comprising the country at that point joined together to create the Commonwealth of Australia. The colonial navies integrated too, and a few years later relocated their Sydney stores to Darling Island—by then attached to the mainland—whose natural deep-water wharf was ideal.

Collectively called the Royal Edward Victualling

Yard (REVY), these buildings were the first of their kind in the southern hemisphere to be granted the title 'royal', in recognition of their strategic importance to the British Empire.

The original two structures furthest from the harbour front are still standing. Their success led to the need for an even larger storehouse. Designated REVY 'C', this building was completed in 1912, just a year after the new Commonwealth Naval Forces became the Royal Australian Navy.

The Revy quickly became the Navy's chief storage facility, faithfully serving the nation through two world wars as well as in peacetime. Later, this monumental building became the home of the Navy's research facility.

Such a unique history has guaranteed The Revy a place on the State Heritage Register of New South Wales: culturally significant, unrepeatable, and an incredible starting point for a dramatic residential conversion.

Hallmarks of greatness

Trace the rough-hewn bluestone wall with your palm. Gaze up past the fine brickwork to the arched windows and rooftop parapets. Admire the original ironwork fire stairs and central crane, proudly displayed as industrial sculpture. Rare and visually arresting, these elements not only point to the building's architectural era, and to its former use, but offer clues to the guiding hand behind it.

Walter Liberty Vernon was an English architect who, in 1883, emigrated to Australia for health reasons. A military man, he was a fine and courageous soldier, and staunch patriot of his adopted country. Following early important commissions, he ultimately became the first Government Architect of New South Wales.

Vernon insisted The Revy be built to his exacting standards. Its steel structure supported floors of reinforced concrete (a new material at that time), combined with timber joinery and load-bearing external masonry.

At eight storeys high, The Revy was once the tallest building on the southern harbour front. Today, it's still highly visible from key vantage points inland as well as from the harbour itself, its distinct aspect and imposing gravitas unlike anything else in the country or beyond.

The fire stairs were an innovation at the time and show Vernon's concern for safety. But they also demonstrate his shrewd eye for visual proportion and balance, becoming a distinctive feature in their own right.

The building was designed to receive goods on the street side, store them securely inside, then send them through to the wharf for shipping. This arrangement is ideal for modern residences as each home enjoys cross-ventilation and light. And the waterfront, just metres away, will never be obstructed.

Stand outside The Revy and inhale the glorious tang of the sea, and you can almost hear the echoes of the past—the calls and whistles, and camaraderie of wharf workers.

The Revy was among Vernon's last works, capping a glorious career that included the Art Gallery of New South Wales, the State Library, and Sydney's Central Railway Station. Beyond the city, his signature is imprinted across the State in courthouses, fire stations and all manner of civic buildings.

The Revy's rigorous design, superb condition and association with Vernon himself, make this a building with an authentic claim to greatness.



*Walter Liberty Vernon (1846-1914),
designer of The Remy, was the
Government Architect of the day*

*

The Remy conjures an era when
architecture was truly built to last.
A testament to the past, primed
for the future—uniquely Sydney.



Gaze up past the fine brickwork to the arched windows and rooftop parapets. Admire the original ironwork fire stairs and central crane.



A gilded transformation



Our interiors celebrate the layering of rich historical craftsmanship with refined modern details.

The Revy's wonderful heritage story and magnificent architecture seem to evoke an earlier golden age.

Coupled with the unbeatable waterfront location, the building deserves to be elevated into a truly luxurious living environment.

The site's relationship to the harbour is a unique aspect that called to mind ideas of luxury shipbuilding. This notion of craftsmanship inspired our detail throughout.

We imagined the interior as a contemporary space placed within the existing heritage building,

sitting with reverence, almost touching. The transition between the new and the old is then celebrated as a magical moment representing the passing of time.

The apartments are unique in their plan, all having exposure to the east and west, and thus the rise and fall of the sun. Time is therefore experienced at a macro level in the design details and on a micro level as the day goes from dawn till dusk.

Through a focus on distinctive detailing, the internal architecture illustrates the bridge between the historical legacy and a new generation.

*

*The new interior celebrates
the connection between the existing
building and its new identity*



Drapery slides discreetly behind the wall panels, while subtle cove lighting highlights the original brickwork above. Bronze detailing frames the spectacular views.



As with every apartment, the penthouse spans the building's full width, its north-facing windows granting sunshine throughout the day.

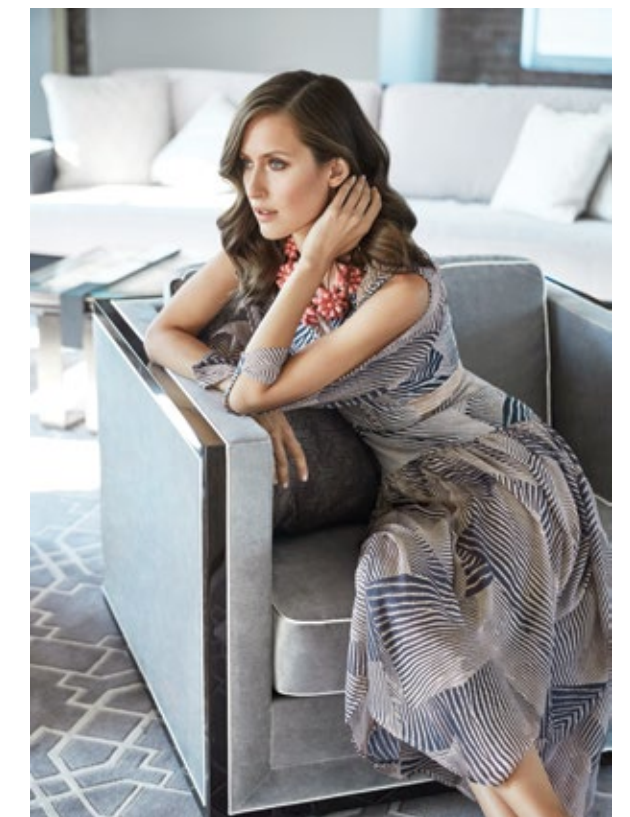


The signature light is custom designed to pair with the elegant marble countertop whose bronze detailing recalls the wall panels. Fitted with chef-quality Sub-Zero and Wolf appliances, this superb kitchen also makes a feature of the distinctive arched window, day and night.



The penthouse en suite, luxuriously appointed with marble his-and-hers vanities, echoes the overall design concept with its bronze detailing. As in the kitchen, the arched window is a feature.

With its singular blend of rich heritage, spectacular location and sheer quality of design concept, The Revy offers something other contemporary residences cannot match.





A stone border surrounds the perimeter of each apartment at its base, adjoining the timber floors that feature custom-detailed parquetry.



With its marble centrepiece, custom lighting and world-class integrated appliances from Sub-Zero and Wolf, the kitchen in the standard apartment is anything but standard.



The main bathroom of the standard layout features marble walls, luxury fittings and herringbone marble tile floors.

Carrying echoes of the past,
The Revy is being reimagined
for a glorious future.

Revelling in light and space,
crafted to complement every
original feature—these are
inspiring, luminous residences.

Reserve your place in history
and write the next chapter.



A meeting of minds

Partnering with the best

Aqualand Australia comprises a team of industry experts whose diverse skills and insights ensure this flagship development will achieve its full potential. While this team is responsible for planning, designing and marketing the development, such a large undertaking inevitably relies on a network of trusted partners.

We are privileged to collaborate with companies that can boast local and global

experience. These partners are all highly respected within the industry. We treat them as partners because their passion for the project is equal to ours, and because they can deliver the quality The Revy deserves.

We have asked a lot of the individuals in these companies and we'd like to acknowledge and thank everyone who has helped bring our vision to glorious life.



Reserve your place in history

TheRevy.com

