

SPIRIT

THE ULTIMATE IN COASTAL LUXURY LIVING

SPIRIT

THE ULTIMATE IN COASTAL LUXURY LIVING



SPIRIT

WHERE
WORLD-CLASS
ARCHITECTURE
COMPLIMENTS
THE COAST

4

5

6

7

8

9

10

11

12

13

14

15

16

17

18

19

20

21

22

23

24

25

26

27

28

29

30

31

32

33

34

35

36

37

38

39

40

41

42

43

44

45

46

47

48

49

50

51

52

53

54

55

56

57

58

59

60

61

62

63

64

65

66

67

68

69

70

71

72

73

74

75

76

77

78

79

80

81

82

83

84

85

86

87

88

89

90

91

92

93

94

95

96

97

98

99

100

SPIRIT

A WORLD-CLASS DESTINATION

The Gold Coast is part of the fastest growing area in Australia. It hosts millions of visitors each year, with thousands of those people moving in permanently from interstate and overseas. It is clear why; the splendour of the Gold Coast offers a lifestyle like no other – brimming with opportunities for high-quality education, luxury retail, fine dining, and leisure – dressed in the beauty and warmth of the beach.



ABOVE THE SHORELINE, BEYOND THE HORIZON

This is Spirit. Where open space meets the endless ocean and warmth of the Gold Coast greets you every day. A place where the water and sky meet as one and the horizon charms you with its ever-changing hues of turquoise and sunlit gold. Where sun-kissed shoulders glide through water and champagne is sipped from crystal stems at the pool bar. Where the warmth of the evening invigorates, as new adventures entice you into the night.

This is Spirit. Decadence with an Australian edge. Contemporary architecture that ripples across the skyline and makes its mark against the golden sand. Homes to delight and inspire, overlooking an endless blue panorama.

An experience you'll never forget — over a lifetime.



TRUE BLUE LUXURY

Rising 89 stories above the golden sand, Spirit is set to be a modern landmark. Glittering high above the shoreline, this will be the tallest tower in the region and home to 479 unique luxury residences. Its astonishing architectural presence is set to be a defining feature of the Gold Coast skyline, admired for years to come.

The unique, rippling architecture that defines Spirit allows for an unprecedented choice of apartment types. Designed to the highest standards of form and function, all residences offer generous open space to highlight the stunning view. This is a unique offering, and within the wide variety of contemporary residences available, there is something for even the most discerning buyer.



A SKYHOME ABOVE THE SEA

Just moments from where the warm ocean waves greet the sand, this shimmering high-rise is located at the heart of Australia's most desired destination. The Gold Coast is built for pleasure. A place dedicated to the sun, surf and splendour, with its iconic coastline a crown of startling beauty stretching over 52km of soft golden sand.

Brimming with an opulent spirit, the Gold Coast is home to high rollers, decked in diamonds and dazzled by the splendour of 24-hour entertainment at your fingertips.

This is where world-class chefs showcase their culinary expertise, and fine dining reaches a new level of VIP service. Where luxury brands are on your doorstep, and the highest quality craftsmanship and details are customary. Where golfing greens stretch across acres of rolling hills, and Australia's wineries are hidden amongst the tranquil rainforest hinterland.

Enjoy freshly shucked oysters as you watch the surf break from your balcony, and bask in the hazy sunset as you prepare for a night of endless indulgence.

LEISURE ON THE GOLD COAST

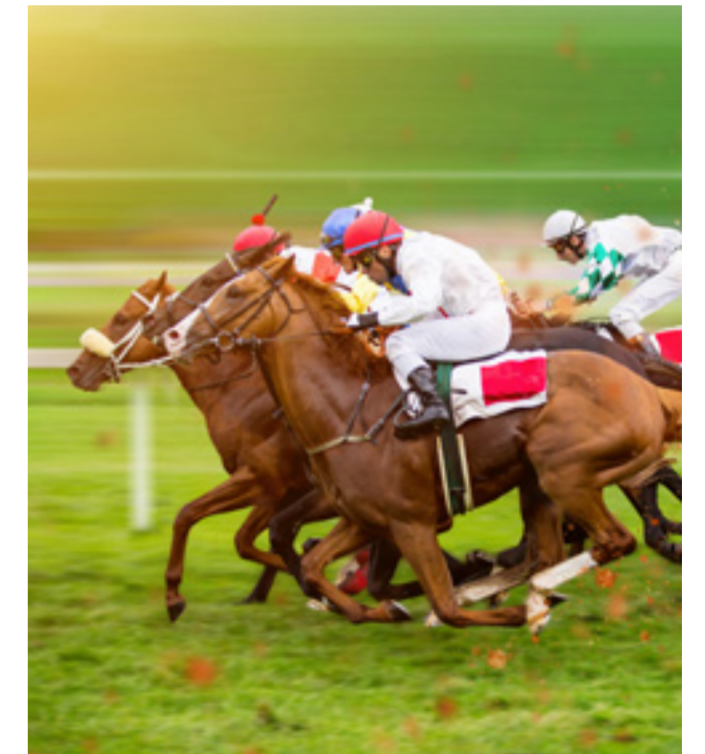


< GOLF CLUB

With dozens of stunning golf courses, there is endless sweeping green space for you to enjoy 18 holes. With some courses close to home, and others nestled in the tranquil hinterland, there is ample opportunity to perfect your swing atop spectacular rolling hills.

MAGIC MILLIONS >

A top-level event in global racing circles, its huge international profile brings guests from all over the world to the Gold Coast every year. The event will now feature brilliant polo matches, and a major thoroughbred horse meeting following the 8 days of auction – with all ten races only open to horses bought at previous Magic Millions events.



< WORLD SURF TOUR

Every year the world surfing tour kicks off at the Quiksilver Pro on the Gold Coast. Broadcast around the globe, you can have the front row as surfers stun with their gravity-defying skills. Take in the drama and adventure of competitive surfing, set in the world's most beautiful arena – the Pacific Ocean.

SUPERCARS >

As the premier motorsport category in Australasia, and one of Australia's biggest sports – Supercars is becoming a leader in motorsport entertainment. Be exhilarated as the supercars whip past in an amazing feat of driving ability made possible by ever advancing technology.





- 1 CAVILLE AVENUE PREMIUM RETAIL
- 2 PALAZZO VERSACE
- 3 SKY POINT OBSERVATION DECK
- 4 STAR CASINO
- 5 PACIFIC FAIR SHOPPING CENTRE
- 6 SURFERS PARADISE GOLF CLUB
- 7 LAKELANDS GOLF COURSE
- 8 PALM MEADOWS GOLF COURSE
- 9 GOLD COAST TURF CLUB & MARKETS
- 10 ROYAL PINES GOLF RESORT
- 11 THE SOUTHPORT SCHOOL
- 12 AUSTRALIA FAIR SHOPPING CENTRE
- 13 MARINA MIRAGE
- 14 GRIFFITH UNIVERSITY
- 15 SEA WORLD
- 16 DREAM WORLD, MOVIE WORLD & WET N' WILD



< GOLD COAST LIGHT RAIL

Known as the Glink, this light rail system stretches across 13 kilometres from Broadbeach South to the Gold Coast University Hospital.

CONNECTIVITY >

Tugan Bypass makes it a short drive to northern NSW and Byron Bay, while Brisbane is just an hour away. And close to home, more than 1000 kilometres of bikeways link neighbourhoods, schools, foreshores and parks, to major transport routes and other local services.



< ECONOMY

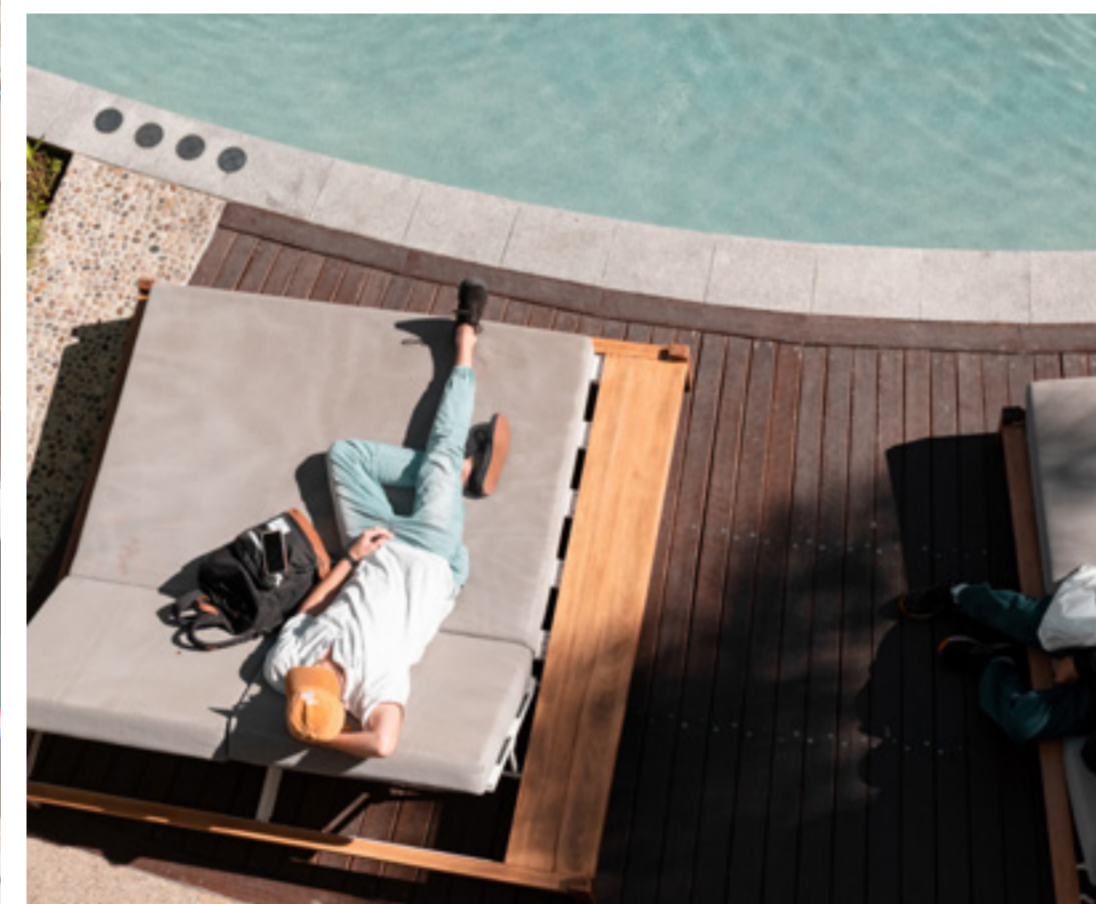
Spread across 415sq kilometres, the City of Gold Coast offers diversity in geography, people, and experiences. Growing from an economy built on construction and tourism, the Gold Coast is diversifying into an economic environment with its main focus on health, education, hospitality, food, and entertainment. The largest industry represented by the health and medical sector employs over 40,800 skilled workers and contributes over \$2.2 billion to the local economy.

EDUCATION & UNIVERSITIES



Educational institutions are found in abundance in the Gold Coast. Top-level world-class education from pre-schools to universities. Pursuit a career in Bond University, ranked as Australia's number one university for student experience for the 11th consecutive year in the 2017 Good Universities Guide; or enrol your kids at the Queensland Academy for Health Sciences, one of the best schools in the State.

A SOPHISTICATED COSMOPOLITAN CITY



With a \$670 million redevelopment, Pacific Fair Shopping Centre, in the heart of Broadbeach, caters for every need. With over 400 specialty stores, Event Cinemas, a Vmax theatre, a casual dining precinct and numerous food courts, Pacific Fair is way more than a shopping centre. Hosting weekly events, offering free shuttle to major Gold Coast locations, Pacific Fair Shopping Centre is the most prominent retail, dining and entertainment hub on the Coast.

LUXURY RETAIL



FINE DINING



ALFRESCO DINING >

The air is warm, and a fresh breeze of sea air reaches you as you go through the menu of your favourite restaurant. Overlooking the ocean, enjoy a refreshing lunch before heading back to the beach.



< SIGNATURE DINING

When its time to dine, you choose the finest. The chef greets you at the table, presenting his latest culinary masterpiece – with complementary wine.

THE BEAUTY INSIDE

Designed to create generous, visually clear spaces, Spirit residences provide the ultimate experience of luxury living.

The residences are sleek, minimal, and speak a contemporary language. The high-level of detail expertly applied to aspects such as the joinery and wall elements creates an overall vision that is crisp, clear and confident – everything aligns. The generous proportions speak to the expansive views of the city and water that colour the windows of your home.

The materials are honest, with unique highlights to celebrate the natural beauty of stone and timber, while the gentle textures, and choice of two soothing colour palettes offer a sense of calm in the midst of this thriving city centre. Pale tones appear as well resolved as a piece of furniture, and become a part of the living zone.

This is a rare offering, in a truly unique position – designed for buyers with high taste.

The tower lobby is designed to perfection with signature artworks and a 3-storey-high ceiling creating a bold architectural impression. Spectacular vertical volumes provide a warm welcome to residents, with the bespoke crystal glass chandelier adding a touch of elegance to the warm reception area.

A six-star arrival experience elegantly welcomes you to the household of pure sophistication, unmatched luxury, and delightful craftsmanship. A place you will belong from the minute you enter.

EVERY SPACE WILL BE YOUR FAVOURITE SPACE

Spirit hosts an unmatched array of residents' exclusive amenities spread across three separate levels. Including infinity pools, deluxe spa facilities, kids' exclusive recreational areas, bars & lounges, a wine cellar, state-of-the-art gymnasiums, and six themed restaurants. Additionally, Spirit sits elegantly on a three-level podium offering Michelin Star restaurants, coffee haunts, premium boutique retail, and exclusive beauty salons.

On level 5, you'll find a generous family entertainment zone with lounge areas and pools for both adults and children, while deluxe spa facilities offer a quiet place to rest and unwind. A gymnasium and residents' bar are enveloped in a full glass facade showcasing the stunning coastline.

Rise again to level 56 to find another pool level – serene and spa-like – with male and female sauna and steam rooms offering unparalleled luxury. The resident's lounge is dressed in tailored upholstery, and a meeting room and gym are available for 24-hour access.

The rooftop is the pinnacle of Spirit, with panoramic views from north to south offering a birds-eye view of the city. Here you'll find pools, a residents' bar, banquet room, and a private cocktail lounge, celebrating the top of the world perspective. The state of the art wine and champagne cellar accompanies the exquisite views, bringing a sense of holiday relaxation and entertainment to your every day. Soar to the heights of elegantly refined living at Spirit.



PRIVATE DINING



Whether enjoying private dining areas, cocktail lounges or In-Residence dining, Spirit has it all. A place with world-class convenience, extraordinary lifestyle amenity and an exceptional level of comfort and refinement.

RESIDENCE DINING AND RETAIL

Spirit residents have exclusive access to five-star services and facilities. The tower's bold podium base is home to 3 levels of quality dining, retail and leisure opportunities, including conference rooms and private lounge areas – with more to come as the tower stretches to the sky.




INSPIRING SHARED SPACES



Residents' spaces are private settings where you can relax in a social environment, while enjoying the resplendent natural surrounds. For celebrations, enjoy a toast at the bar and for quiet contemplation, the library is the perfect place to expand your mind.



A woman in a striped swimsuit and sunglasses is relaxing on a white lounge chair on a rooftop pool deck. The pool is surrounded by modern, curved white architecture with large glass windows. In the background, there are several trees and a clear blue sky. The overall atmosphere is serene and luxurious.

A SANCTUARY OF SERENITY

The rooftop is the pinnacle of Spirit, with panoramic views from north to south offering expansive views of the coast, the hinterland, and the city. Here you'll find pools, a residents' bar and banquet room and a private cocktail lounge. All communal areas feature stunning landscaping to complement the expansive views, bringing a sense of holiday and adventure to your every day.



EVERY MOMENT ELEVATED



LUXURY SERVICES AT THE HIGHEST LEVEL



Operated by a boutique hotel company, Spirit treats its residents to the highest level of living. Managed services on a pay-per-use basis include top class decorative furniture, housekeeping, babysitting, pet vacation care and grooming, personal shopping guide, catering for dining in your apartment, wedding functions, and travel and accommodation booking assistance.



3 BEDROOM RESIDENCES



3 BEDROOM KITCHEN

Bring a sense of the outdoors inside. Where you are at one with the world around you as you enjoy an intimate breakfast, watching the sun rise and feel calmed by the gentle pulse of the ocean.



3 BEDROOM LIVING

Enjoy expansive and unparalleled sweeping views where wall-to-floor windows invite the beauty of the coast indoors while gentle palettes and soft textures express a sense of private retreat.

2 BEDROOM RESIDENCES



2 BEDROOM KITCHEN

Refined and precisely crafted, your kitchen is a work of art celebrating the beauty of organic materials, pairing subtle natural timbers with rare quartzite and marble.



2 BEDROOM ENSUITE

1 BEDROOM RESIDENCES



1 BEDROOM LIVING

Perfectly proportioned, generous living spaces float on gently toned oak timber floors. This natural palette is inviting, providing a sense of ease and opportunity for you to bring your own sense of style to the space.



1 BEDROOM KITCHEN

Detailed joinery greets residents on their arrival home. Presented as a finely crafted piece of furniture, the kitchen's pale stone bench-tops and splash backs encase your world-class European appliances, while thoughtful storage and clever accent lighting keep your space clean and minimal.

THE TEAM



DBI was founded in Australia in 1980. For over 30 years, the firm has always been driven by innovation in both form and function, putting the human experience at the centrepiece of every project outcome. Our design ethos is based on the seamless integration of the built structure, the direct environment in which it lives and the positive lifestyle interaction it generates through its urban inhabitancy. We are progressive in our collaborative approach to cultural contribution, embracing local customs and stakeholders to deliver exceptional experiences for the people. Our team is ahead of the industry curve in their respective disciplines, striving for leading-edge solutions that push traditional design paradigms into daring new frontiers.



Ray White Projects are a group of project marketing professionals, dedicated to delivering outstanding results for our clients. As a cohesive group, we share a single purpose of exceeding developer expectations for each project right through to completion. We extract full value from the broader Ray White Group to produce the best results possible. We are able to take advantage of large group databases of qualified buyers; local, national and international knowledge and relationships; advertising strength and prominence; finance specialists and much, much more. Ray White Projects has the experience, expertise and fully integrated approach to not only meet but exceed your sales expectations.



Beijing Foriseland Real Estate Development Co. Ltd is a creative global investment and operation platform, which focuses on culture and tourism industry. As a "global creative investor and operator in cultural tourism industry", Foriseland, since its establishment, has already understood the value of "industry + finance". It sticks to the enterprise development strategy of "industry orientation, global vision", and actively establishes four core divisions including cultural creative industry, cultural tourism industry, health industry and overseas financial property against the opportunities and challenges brought by Chinese economic transform. It recruits global top talents, takes the integration of "intelligence and innovation" as core drive for enterprise development and continuously explores the tendency of cultural tourism industry. It thereof establishes an integrated cultural tourism development platform, which is based on multi-dimensional industrial chains, embedded in property and commerce, supported by finance and takes Internet as gene, culture as the core, entertainment experience as motivation.



SPIRIT

SPIRIT GOLD COAST

1800 161 888



Important Disclaimer

All reasonable care has been taken in the preparation of this document. To the best of our knowledge, no relevant information has been omitted. This document (and any dimension, area, level, layout, design feature, finish, fixtures, utility, appliances, views, photographs and artist's impression on or part of them) is for presentation purposes and indicative only. They may not represent the final product and are subject to change. In addition, the location of utilities may vary during construction. Any areas/measurements are generally measured in accordance with the Property Council of Australia method of measurement. Prospective buyers must rely on their own enquiries and should, before signing the contract of sale and should refer to the contract and the disclosure document (under which changes are permitted) for all matter to be included in the purchase price of the lot (including finishes, fixtures, fittings, appliances and other particulars of sale). The developer and its appointed agents disclaim all liability should any information or matter contained herein differ from the contract of sale or the actual constructed development. Furniture and planters are for decorative purposes and not included. Extent of floor finishes may vary. External spaces and landscaping are indicative only. Photographs and artist's impressions are illustrative only. Design by MAMA