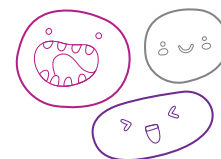







# OUT OF SCHOOL HOURS CARE

Please see our website for fee information

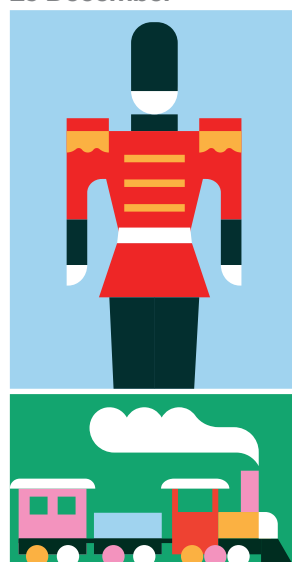
## Vacation Care | 18 Dec–19 Jan



### WEEK 1

Monday 18 December	Tuesday 19 December	Wednesday 20 December	Thursday 21 December	Friday 22 December
In-House <b>Make a Splash</b>	In-House <b>Roar</b>	Excursion <b>Inflatable World</b>	In-House <b>Festive Cooking</b>	In-House <b>Christmas Party</b>
				
Enter the holidays with a splash!  Bubbles and messy play so please bring a change of clothes. We'll also have construction play.	Follow the footprints through the jungle to discover the dinosaurs hidden in the yards.  We'll be using the sensory trays to find the fossils.	Inflatable World Depart: 9:30am Return 12:30pm Transport: Private Bus  In-house option: Sensory play and cooking	Cook up a storm in the kitchen; cooking and decorating gingerbread and Christmas treats.  We'll also be painting and doing Christmas crafts.	Enjoy a party with some Christmas carols and your friends.  We'll also make a gift and card to take home.
<b>Outcomes:</b> 1, 2, 3	<b>Outcomes:</b> 1, 2, 3, 4	<b>Outcomes:</b> 1, 2	<b>Outcomes:</b> 1, 2	<b>Outcomes:</b> 3, 4, 5

**Monday**  
25 December



**Friday**  
5 January



**Book your session via the Xplor Home App**

Visit [sa.ymca.org.au/OSHC](http://sa.ymca.org.au/OSHC) for more information



**Adelaide North Special School OSHC**  
135 Douglas Drive, Munno Para West, SA 5115  
**Belinda Hill**  
0459 988 101

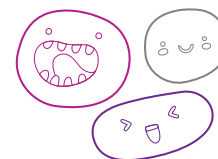
**OSHC Support Team**  
**P** 08 8200 2516  
**E** [oshc@ymcasa.org.au](mailto:oshc@ymcasa.org.au)  
**f** /YMCA SA OSHC



# OUT OF SCHOOL HOURS CARE

Please see our website for fee information

## Vacation Care | 18 Dec–19 Jan



### WEEK 2

**Monday**  
8 January

In-House  
**Disney Day**



All things Disney! We will have a visit from Minnie Mouse and do sing along songs.

Work together to make a group collaborative masterpiece.

**Outcomes:** 1, 2, 3, 4, 5

**Tuesday**  
9 January

In-House  
**Tie Dye Fun**



Make a tie dye t-shirt or socks to take home.

Explore colours with different arts, books, puzzles, and games.

**Outcomes:** 4, 5

**Wednesday**  
10 January

In-House  
**Ninja Warrior Challenge**



Race against the clock with our own ninja warrior course.

We will also make play dough and slime!

**Outcomes:** 1, 2

**Thursday**  
11 January

Incursion  
**Move It Sensory Fun**



Coming to visit us is Sensory Fun. Please bring old clothes and a change of clothes.  
Start: 10:30am

We will have group games and parachute fun.

**Outcomes:** 1, 2, 3, 4, 5

**Friday**  
12 January

Incursion  
**Live Drum Show**



African Drumming Show.  
Starts: 10:30am

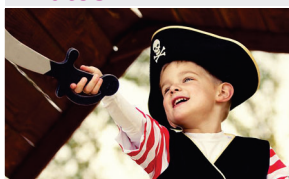
Explore the culture through music and dance, plus make your own drum.

**Outcomes:** 1, 2, 3

### WEEK 3

**Monday**  
15 January

In-House  
**Ah-hoy There Pirates!**



Come along on an adventure exploring the sea and pirate life.

We'll have a Treasure hunt and you can design your own hat.

**Outcomes:** 1, 2, 3

**Tuesday**  
16 January

Excursion  
**Movie Day**



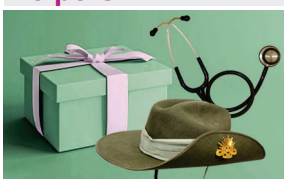
We are off to Semaphore cinema to see Wish.  
Depart: 11:00am  
Return: 3:30pm  
Transport: Private Bus

In-house option:  
Cooking and sensory play.

**Outcomes:** 1, 2, 3, 4

**Wednesday**  
17 January

In-House  
**Community Helpers**



Learn about different helpers in our community.

We will have dress ups and stories, and sun smart activities with designing our own sun hat.

**Outcomes:** 1, 2

**Thursday**  
18 January

In-House  
**Nature Play**



Get messy with natural materials, mud, sand, and water.

We will make bird feeders for our garden and decorate garden stones to hide around the school.

**Outcomes:** 1, 2

**Friday**  
19 January

Incursion  
**Sports Day**



Challenge your friends to a running race, and egg and spoon race.

We will have a jumping castle available today!

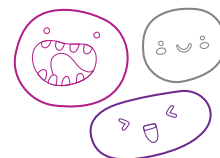
**Outcomes:** 3, 4, 5

**Adelaide North Special School OSHC**  
135 Douglas Drive, Munno Para West, SA 5115  
**Belinda Hill**  
0459 988 101

**OSHC Support Team**  
**P** 08 8200 2516  
**E** oshc@ymcasa.org.au  
**f** /YMCA SA OSHC



# OUT OF SCHOOL HOURS CARE



## Adelaide North Special School OSHC

### Important information:

- OSHC will be open from 8:00am – 6:00pm, please sign in and out between these times.
- Cancellations must be made two weeks prior to the date of requested care to avoid payment.
- Please send children in appropriate clothes for the activity they will be participating in.
- Sun Smart guidelines are followed so please ensure a hat is worn and no singlets.
- Sunscreen is provided. If your child is sensitive to sunscreen, please provide your own.
- Please review our terms and conditions online for our fee and policy information.
- Please provide morning tea, lunch and a drink bottle every day unless stated otherwise.
- Please note that we are a NUT-aware centre.
- Afternoon tea will be provided.
- Handheld electronic devices are not permitted at the centre unless specified in the day's description, communication devices are allowed.
- We welcome feedback and suggestions at any time, please see your centre staff
- By making a booking you are agreeing to pay the fees through your direct debit account in addition to normal OSHC bookings
- Please inform the service if your child suffers from travel sickness.
- Programmed activities are subject to change.

\*Typical fee after subsidy is applied

*While bus drivers (in SA) are exempt from ensuring passengers under 16Y are restrained, YMCA OSHC will make every effort to ensure the safety of all children by using seat belts that are supplied and be guided by our policies and transport risk assessment.*

### Learning outcomes:



#### OUTCOME 1

Children have a strong sense of identity



#### OUTCOME 2

Children are connected & contribute to their world



#### OUTCOME 3

Children have a strong sense of wellbeing



#### OUTCOME 4

Children are confident and involved learners



#### OUTCOME 5

Children are effective communicators



Book your session via the Xplor Home App

Visit [sa.ymca.org.au/OSHC](https://sa.ymca.org.au/OSHC) for more information