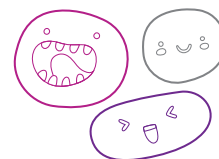


# OUT OF SCHOOL HOURS CARE

## Vacation Care | 18 Dec–26 Jan

IN-HOUSE EXCURSION / INCURSION	FULL FEE	\$65.00	CCS REDUCED FEE*	\$9.75-35.75
	FULL FEE	\$85.00	CCS REDUCED FEE*	\$12.75-35.75



### WEEK 1

**Monday**  
18 December

In-House

#### Slime and Sensory Day



Let's get creative and make our very own slime and sensory items. Is there a favourite sensory or slime recipe you would like to make?

**Outcomes:** 1, 3, 4

**Tuesday**  
19 December

In-House

#### Technology Day



Let's do everything technology! Make your very own computers, and TV's. Children can also bring their own devices but are responsible for looking after them.

**Outcomes:** 1, 5

**Wednesday**  
20 December

Excursion

#### Port Pirie Beach



Today we are joining St Marks OSHC at the beach. Sandwiches, chips and fruit will be provided.

Depart: 10:00am  
Return: 2:00pm  
Transport: Private Bus

**Outcomes:** 1, 2, 3

**Thursday**  
21 December

Incursion

#### Stuffers



Today we are going to make our very own Stuffers Bears. With the help of our educators, you will have the opportunity to stuff your own bears to give them a name and to take home.

**Outcomes:** 1, 2, 4

**Friday**  
22 December

In-House

#### Christmas Party

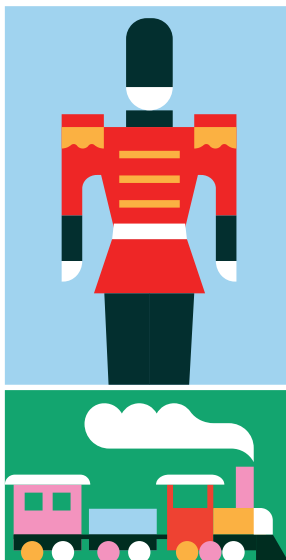


It's Christmas time! Let's celebrate by making some Christmas crafts and having some fun Christmas themed activities.

Christmas lunch provided.

**Outcomes:** 2, 5

**Monday**  
25 December



**Friday**  
5 January



**Book your session via the Xplor Home App**

Visit [sa.ymca.org.au/OSHC](http://sa.ymca.org.au/OSHC) for more information



**Airdale Primary OSHC**  
400 Anzac Road, Port Pirie, SA, 5540  
**Les Jarrett**  
0428 172 791

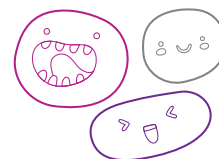
**OSHC Support Team**  
P 08 8200 2516  
E [oshc@ymcasa.org.au](mailto:oshc@ymcasa.org.au)  
f /YMCA SA OSHC

the **Y**

# OUT OF SCHOOL HOURS CARE

## Vacation Care | 18 Dec–26 Jan

IN-HOUSE	FULL FEE	\$65.00	CCS REDUCED FEE*	\$9.75-35.75
	EXCURSION / INCURSION	\$85.00	CCS REDUCED FEE*	\$12.75-35.75



### WEEK 2

**Monday**  
8 January

Excursion

**Woodward Park Nature Playground**



Let's try out the new nature playground at Woodward Park. Fun games on the oval and knockout basketball games.  
Depart: 10:00am  
Return: 2:00pm  
Transport: Private Bus

**Outcomes:** 1, 2, 3, 4, 5

**Tuesday**  
9 January

In-House

**Wheels Day**



Come join us for Wheels Day; riding around and showing off your best skills.  
  
Helmets are required, otherwise no wheels.

**Outcomes:** 1, 2, 3, 4, 5

**Wednesday**  
10 January

In-House

**Moves and Grooves**



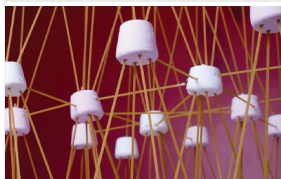
We will bring the music; you bring the grooves!  
  
There'll be music, musical games and even make our own musical instruments.

**Outcomes:** 4, 5

**Thursday**  
11 January

In-House

**S.T.E.A.M. Day**



Science, tech, engineering, arts, and maths all combined as we do experiments, challenges and creations all based on S.T.E.A.M. education.

**Outcomes:** 2, 4, 5

**Friday**  
12 January

Incursion

**Gooroo Animation**



Come join us as we make Gooroo Claymation animations. You will have the opportunity to be as creative as you want.

Start: 11:00am

**Outcomes:** 1, 5

### WEEK 3

**Monday**  
15 January

Excursion

**Little Beans Play Cafe**



Engage in a variety of gross motor skill play and socialising in a fun playground.

Depart: 10:00am  
Return: 1:00pm  
Transport: Private Bus

**Outcomes:** 2, 5

**Tuesday**  
16 January

In-House

**Minute-To-Win-It**



Can you complete the activities in 60 seconds?  
  
The last one standing wins a prize!

**Outcomes:** 1, 4, 5

**Wednesday**  
17 January

In-House

**Water Play Day**



Come join us for water play fun: water balloons, water slide, and mini pool. We will also have messy play and have a sandcastle competition. Please bring a change of clothes and bathers.

**Outcomes:** 1, 3

**Thursday**  
18 January

In-House

**Plant and Grow**



Today we are going to plant fruit and seedlings, work on the OSHC garden, and take home a pot of your own.

**Outcomes:** 1, 3

**Friday**  
19 January

Incursion

**ActFas First Aid Visit**



ActFas First Aid will be visiting and performing a training workshop on basic first aid skills, which is very important for everyone's safety.

Start: 12:00pm

**Outcomes:** 1, 3, 4, 5

**Airdale Primary OSHC**  
400 Anzac Road, Port Pirie, SA, 5540  
**Les Jarrett**  
0428 172 791

**OSHC Support Team**  
P 08 8200 2516  
E oshc@ymcasa.org.au  
f /YMCA SA OSHC



# OUT OF SCHOOL HOURS CARE

## Vacation Care | 18 Dec–26 Jan

### WEEK 4

IN-HOUSE	FULL FEE	\$65.00	CCS REDUCED FEE*	\$9.75-35.75
	EXCURSION / INCURSION	\$85.00	CCS REDUCED FEE*	\$12.75-35.75



**Monday**  
22 January

In-House

**Beautiful Creations**



Today we are going to be doing craft to create some beautiful creations. Everyone will be able to take their creations home.

**Outcomes:** 1, 3, 4

**Tuesday**  
23 January

Incursion

**Colour Run**



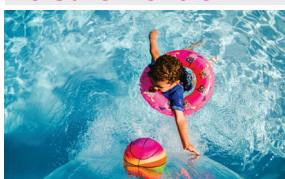
Today we are going to participate in an OSHC colour run; running around the Airdale oval. After every 100m we will be covered in coloured powder.

**Outcomes:** 1, 2

**Wednesday**  
24 January

Excursion

**Aquatic and Leisure Centre**



Come join us for some swimming as we join with St Marks OSHC.

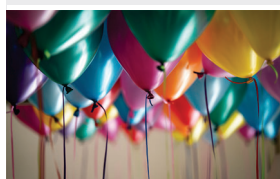
Depart: 10:00am  
Return: 1:00pm  
Transport: Private Bus

**Outcomes:** 1, 3, 5

**Thursday**  
25 January

In-House

**OSHC Party Day**



Come and join us as we celebrate the end of the holidays; party food supplied for lunch.

**Outcomes:** 1, 2

**Friday**  
26 January

**HAPPY AUSTRALIA DAY**



**CLOSED**



Book your session via the Xplor Home App

Visit [sa.ymca.org.au/OSHC](https://sa.ymca.org.au/OSHC) for more information

**Airdale Primary OSHC**

400 Anzac Road, Port Pirie, SA, 5540

**Les Jarrett**

0428 172 791

**OSHC Support Team**

**P** 08 8200 2516

**E** [oshc@ymcasa.org.au](mailto:oshc@ymcasa.org.au)

**f** /YMCA SA OSHC



# OUT OF SCHOOL HOURS CARE

## Airdale Primary OSHC



### Important information:

- OSHC will be open from 8:00am – 6:00pm, please sign in and out between these times.
- All bookings must be received by Monday 4 December to avoid a \$3 casual fee.
- Cancellations must be made two weeks prior to the date of requested care to avoid payment.
- Please send children in appropriate clothes for the activity they will be participating in.
- Sun Smart guidelines are followed so please ensure a hat is worn and no singlets.
- Sunscreen is provided. If your child is sensitive to sunscreen, please provide your own.
- Please review our terms and conditions online for our fee and policy information.
- Please provide morning tea, lunch and a drink bottle every day unless stated otherwise.
- Please note that we are a NUT-aware centre.
- Breakfast and afternoon tea will be provided.
- Handheld electronic devices are not permitted at the centre unless specified in the day's description, communication devices are allowed.
- We welcome feedback and suggestions at any time, please see your centre staff
- By making a booking you are agreeing to pay the fees through your direct debit account in addition to normal OSHC bookings
- Please inform the service if your child suffers from travel sickness.
- Programmed activities are subject to change.

\*Typical fee after subsidy is applied

*While bus drivers (in SA) are exempt from ensuring passengers under 16Y are restrained, YMCA OSHC will make every effort to ensure the safety of all children by using seat belts that are supplied and be guided by our policies and transport risk assessment.*

### Learning outcomes:



#### OUTCOME 1

Children have a strong sense of identity



#### OUTCOME 2

Children are connected & contribute to their world



#### OUTCOME 3

Children have a strong sense of wellbeing



#### OUTCOME 4

Children are confident and involved learners



#### OUTCOME 5

Children are effective communicators



Book your session via the Xplor Home App

Visit [sa.ymca.org.au/OSHC](https://sa.ymca.org.au/OSHC) for more information