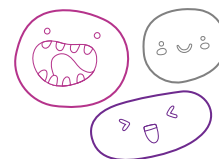









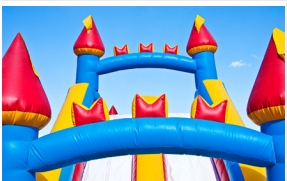


OUT OF SCHOOL HOURS CARE

Vacation Care | 18 Apr - 29 Apr

WEEKS 1 - 2

IN-HOUSE EXCURSION/ INCURSION	FULL FEE	\$	CCS REDUCED FEE*	\$
	FULL FEE	\$	CCS REDUCED FEE*	\$14.00 - \$37.90



Monday 18 April 	Tuesday 19 April  Outcomes:	Wednesday 20 April  Outcomes:	Thursday 21 April  Outcomes:	Friday 22 April  Outcomes:
Monday 25 April 	Tuesday 26 April  Outcomes:	Wednesday 27 April  Outcomes:	Thursday 28 April  Outcomes:	Friday 29 April  Outcomes:



Book your session via the Xplor Home App
Visit sa.ymca.org.au/OSHC for more information

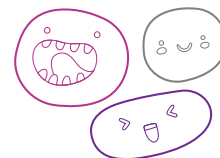
Encounter Lutheran OSHC
64 Adelaide Road, Hayborough SA 5211
Sophie Rowett – OSHC Service Director
P 0428 631 715

OSHC Support Team
P 08 8200 2516
E oshc@ymcasa.org.au
f /YMCA SA OSHC



OUT OF SCHOOL HOURS CARE

Encounter Lutheran OSHC



Important information:

- OSHC will be open from 7am – 6pm, please sign in and out between these times
- All bookings must be received by Monday 11th April to avoid a \$3 casual fee
- Cancellations must be made two weeks prior to the date of requested care to avoid payment
- Please send children in appropriate clothes for the activity they will be participating in
- Sun Smart guidelines are followed so please ensure a hat is worn and no singlets
- Sunscreen is provided. If your child is sensitive to sunscreen, please provide your own
- Please review our terms and conditions online for other fee and policy information
- Please provide morning tea, lunch and a drink bottle every day unless stated otherwise
- Breakfast and afternoon tea will be provided and we are a NUT free centre
- Hand held electronic devices are not permitted at the centre unless specified in the days description, communication devices are allowed.
- We welcome feedback and suggestions at any time, please see your Centre staff
- By making a booking you are agreeing to pay the fees through your direct debit account in addition to normal OSHC bookings
- Please inform the service if your child suffers from travel sickness

*Typical fee after subsidy is applied

While bus drivers (in SA) are exempt from ensuring passengers under 16Y are restrained, YMCA OSHC will make every effort to ensure the safety of all children by using seat belts that are supplied and be guided by our policies and transport risk assessment.

Learning outcomes:



OUTCOME 1

Children have a strong sense of identity



OUTCOME 2

Children are connected & contribute to their world



OUTCOME 3

Children have a strong sense of wellbeing



OUTCOME 4

Children are confident and involved learners



OUTCOME 5

Children are effective communicators



Book your session via the Xplor Home App

Visit sa.ymca.org.au/OSHC for more information