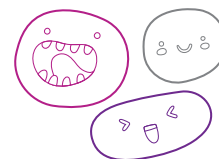







OUT OF SCHOOL HOURS CARE

Vacation Care | 18 Dec–26 Jan

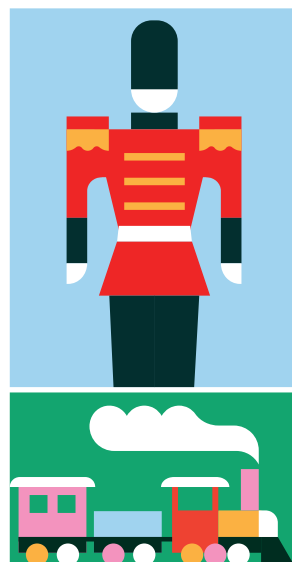
IN-HOUSE EXCURSION/ INCURSION	FULL FEE	\$55.00	CCS REDUCED FEE*	\$8.50-30.50
	FULL FEE	\$70.00	CCS REDUCED FEE*	\$12.50-35.00



WEEK 1

Monday 18 December	Tuesday 19 December	Wednesday 20 December	Thursday 21 December	Friday 22 December
In-House	Excursion	Incursion	In-House	Excursion
Tye Die and Arts	Roller Skating at St Clair	Build a Bear and Baking	All Things Christmas	Xtreme Inflatables
				
Come join us for the first day of the holidays with all things creative and fun!	We are heading out to do some roller skating then lunch at the park.	Build a Christmas teddy for the holidays and enjoy some baking: - Shortbread cookies - Mini pizza's	All I want for Christmas is... A Christmas party at OSHC!	Jump, climb, run, bounce, and explore at Xtreme Inflatables with us.
Wear old clothes; it's about to get messy, muddy and there will be lots of paint!	Depart: 9:15am Return: 2:00pm Transport: Private Bus	Lunch provided.	Come enjoy some Christmas movies, music, dancing, and crafts.	Depart: 9:00am Return: 1:30pm Transport: Private Bus
Outcomes: 2, 4	Outcomes: 1, 3	Outcomes: 1, 2, 4	Outcomes: 4, 5	Outcomes: 1, 3

Monday
25 December



Friday
5 January



Book your session via the Xplor Home App

Visit sa.ymca.org.au/OSHC for more information



Gawler East OSHC

Finch Road, Gawler East, SA 5118

Ashlea Freer

0499 479 581

OSHC Support Team

P 08 8200 2516

E oshc@ymcasa.org.au

f /YMCA SA OSHC

the 

OUT OF SCHOOL HOURS CARE

Vacation Care | 18 Dec–26 Jan

IN-HOUSE EXCURSION/ INCURSION	FULL FEE	\$55.00	CCS REDUCED FEE*	\$8.50-30.50
	FULL FEE	\$70.00	CCS REDUCED FEE*	\$12.50-35.00



WEEK 2

Monday
8 January

In-House

Technology Day



Bring your technology and enjoy a relaxed first day of the new year at OSHC!

Movies, video games and more.

Outcomes: 1, 5

Tuesday
9 January

Excursion

Big Rocking Horse and Animals



Come explore the Big Rocking Horse, see if you are brave enough to climb to the top.

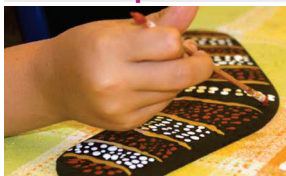
Depart: 10:00am
Return: 2:00pm
Transport: Private Bus

Outcomes: 2, 3

Wednesday
10 January

Incursion

Marra Dreaming Workshop



Raylene from Marra Dreaming is coming for a workshop with us today to teach us about the culture of the land.

Start: 10:30am

Outcomes: 1, 2, 5

Thursday
11 January

Excursion

Playground Hopper



Jump on the bus and come explore three awesome playgrounds with us!

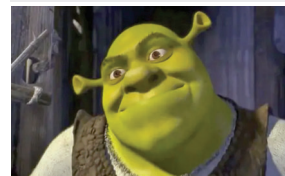
Depart: 9:30am
Return: 3:00pm
Transport: Private Bus

Outcomes: 1, 3

Friday
12 January

In-House

Shrek Mania Day



Hey now, you're an all-star, get your SHREK on!

Come and enjoy all things Shrek related.

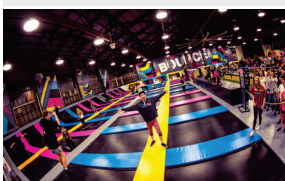
Outcomes: 4, 5

WEEK 3

Monday
15 January

In-House

Bounce



We have booked two separate group sessions for the day.

Group One:
9:45am - 12:00pm
Group Two:
11:45am - 2:00pm
Transport: Private Bus

Outcomes: 1, 2, 3

Tuesday
16 January

In-House

Dinosaurs and Insects



Create a dinosaur or insect habitat with us.

Join in on some dinosaur or insect themed activities and watch A Bugs Life or The Land Before Time.

Outcomes: 2, 4

Wednesday
17 January

Incursion

Music and Movement



Sara from Miss Fit Movement is coming to run two fun group sessions of Yoga, Zumba, Dance Fun and more with us. Don't forget your dancing shoes.

Start: 10:00am

Outcomes: 3, 5

Thursday
18 January

In-House

Science and Sensory



Bring out the mad scientist in you and learn about different experiments with us.

Also, explore your senses with some fun sensory activities.

Outcomes: 2, 4

Friday
19 January

Excursion

Mystery Surprise Fun



Are you ready for an excursion surprise?

Depart: 9:00am
Return: 3:00pm
Transport: Private Bus

Outcomes: 2, 3

Gawler East OSHC

Finch Road, Gawler East, SA 5118

Ashlea Freer

0499 479 581

OSHC Support Team

P 08 8200 2516

E oshc@ymcasa.org.au

f /YMCA SA OSHC

the

OUT OF SCHOOL HOURS CARE

Vacation Care | 18 Dec–26 Jan

WEEK 4

IN-HOUSE	FULL FEE	\$55.00	CCS REDUCED FEE*	\$8.50-30.50
	EXCURSION / INCURSION	FULL FEE	\$70.00	CCS REDUCED FEE*



Monday
22 January

Excursion

Hahndorf Farm Barn



We are off to the Hahndorf Farm Barn today to explore and learn what life on a farm looks like.

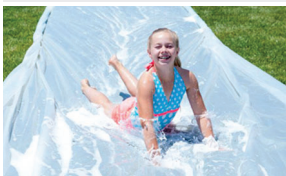
Depart: 9:00am
Return: 3:30pm
Transport: Private Bus

Outcomes: 1, 2

Tuesday
23 January

In-House

Water Play at OSHC



Bring a change of clothes and your towel for this water packed fun day.

Water balloons, water challenges, slip and slides and more.

Outcomes: 1, 3

Wednesday
24 January

In-House

Glow Disco and Lego Masters



Enjoy the morning building and creating with Lego. Then after lunch there will be a glow disco in the hall, with lots of singing, dancing, musical chairs, and more.

Outcomes: 4, 5

Thursday
25 January

Excursion

SA Base Camp



Come try the wall or see if you can make it across the obstacles course and race your friends.

Depart: 9:30am
Return: 1:30pm
Transport: Private Bus

Outcomes: 1, 3, 4

Friday
26 January

HAPPY AUSTRALIA DAY



CLOSED



Book your session via the Xplor Home App

Visit sa.ymca.org.au/OSHC for more information

Gawler East OSHC

Finch Road, Gawler East, SA 5118

Ashlea Freer

0499 479 581

OSHC Support Team

P 08 8200 2516

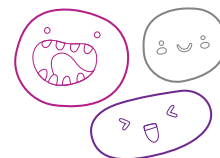
E oshc@ymcasa.org.au

f /YMCA SA OSHC

the **Y**

OUT OF SCHOOL HOURS CARE

Gawler East OSHC



Important information:

- OSHC will be open from 7:00am – 6:00pm, please sign in and out between these times.
- All bookings must be received by Monday 4 December to avoid a \$3 casual fee.
- Cancellations must be made two weeks prior to the date of requested care to avoid payment.
- Please send children in appropriate clothes for the activity they will be participating in.
- Sun Smart guidelines are followed so please ensure a hat is worn and no singlets.
- Sunscreen is provided. If your child is sensitive to sunscreen, please provide your own.
- Please review our terms and conditions online for our fee and policy information.
- Please provide morning tea, lunch and a drink bottle every day unless stated otherwise.
- Please note that we are a NUT-aware centre.
- Breakfast and afternoon tea will be provided.
- Handheld electronic devices are not permitted at the centre unless specified in the day's description, communication devices are allowed.
- We welcome feedback and suggestions at any time, please see your centre staff
- By making a booking you are agreeing to pay the fees through your direct debit account in addition to normal OSHC bookings
- Please inform the service if your child suffers from travel sickness.
- Programmed activities are subject to change.

*Typical fee after subsidy is applied

While bus drivers (in SA) are exempt from ensuring passengers under 16Y are restrained, YMCA OSHC will make every effort to ensure the safety of all children by using seat belts that are supplied and be guided by our policies and transport risk assessment.

Learning outcomes:



OUTCOME 1

Children have a strong sense of identity



OUTCOME 2

Children are connected & contribute to their world



OUTCOME 3

Children have a strong sense of wellbeing



OUTCOME 4

Children are confident and involved learners



OUTCOME 5

Children are effective communicators



Book your session via the Xplor Home App

Visit sa.ymca.org.au/OSHC for more information