

# OUT OF SCHOOL HOURS CARE

## Vacation Care | 15 Dec–23 Jan

IN-HOUSE	FULL FEE	\$67.80	CCS REDUCED FEE*	\$9.75 - \$35.75
	EXCURSION / INCURSION	\$88.70		
EXCURSION / INCURSION	FULL FEE	\$88.70	CCS REDUCED FEE*	\$12.75 - \$46.75
	EXCURSION / INCURSION			

\*Estimation of fees after subsidy is applied

### WEEK 1

Monday  
15 December

In-House

#### STEM Day



Join us for a STEM Day full of fun and creativity! Build cool things in just minutes and see your ideas come to life. Bring your imagination, experiment, and have a blast creating amazing inventions!

Outcomes: 1, 2, 3, 4, 5

Tuesday  
16 December

Incursion

#### Little Animal Encounters



A travelling petting zoo dedicated to provide hands-on educational experience for all ages.

Start: 9:30am  
Finish: 11:30am

Outcomes: 2, 3, 4, 5

Wednesday  
17 December

Excursion

#### Valley Lakes



Spend a day at Valley Lakes with playground fun, wildlife spotting, and a tasty sausage sizzle by the water!

Depart: 9:45am  
Return: 12:00pm  
Transport: Private Bus

Outcomes: 2, 3, 4, 5

Thursday  
18 December

In-House

#### Christmas Creation



Get into the festive spirit and create Christmas gifts for your loved ones. Make handmade treasures filled with love, creativity, and holiday cheer.

Outcomes: 2, 3, 4, 5

Friday  
19 December

In-House

#### Superhero



Unleash your inner hero and dress up as your favourite superhero! Join us for a fun-filled day of action, adventure, and imagination.

Outcomes: 1, 2, 3, 4, 5

Monday  
22 December



Friday  
2 January



Book your session via the Xplor Home App  
Visit [sa.ymca.org.au/OSHC](https://sa.ymca.org.au/OSHC) for more information

McDonald Park OSHC  
50-55 North Terrace, Mt Gambier, SA, 5290  
Christine Uwamahora  
0428 401 962

OSHC Support Team  
P 08 8200 2516  
E [oshc@ymcasa.org.au](mailto:oshc@ymcasa.org.au)  
f /YMCA SA OSHC



# OUT OF SCHOOL HOURS CARE

## Vacation Care | 15 Dec–23 Jan

In-House / Excursion / Incursion	FULL FEE	\$67.80	CCS REDUCED FEE*	\$9.75 - \$35.75
	FULL FEE	\$88.70	CCS REDUCED FEE*	\$12.75 - \$46.75

\*Estimation of fees after subsidy is applied

### WEEK 2

Monday  
5 January

Incursion

#### Sip And Paint



Bring your imagination to life with paint! Explore colours, shapes, and textures to create your own magical artwork.

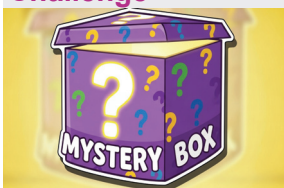
Start: 10:00am  
Finish: 12:00pm

Outcomes: 2, 3, 4, 5

Tuesday  
6 January

In-House

#### Mystery Box Challenge



Unbox the fun: Follow the clues to discover secret items and complete the challenge, if you dare!

Outcomes: 3, 4, 5

Wednesday  
7 January

Excursion

#### Oatmeal Cinema



Dive under the sea for a SpongeBob movie, then continue the fun with an imaginative sea small world play!

Depart: 9:15am  
Return: 12:15pm  
Transport: Private Bus

Outcomes: 4, 5

Thursday  
8 January

In-House

#### Olympics



Go for gold at OSHC Olympics Day! Take on exciting challenges, celebrate teamwork, and have a blast with fun and sportsmanship.

Outcomes: 3, 4, 5

Friday  
9 January

In-House

#### Free Choice Game Day



Enjoy free choice games and be the master of your own play! Pick the games you love and create your own adventures. Explore, imagine, and have fun exactly the way you want.

Outcomes: 2, 3, 4, 5

### WEEK 3

Monday  
12 January

In-House

#### Science Rocks



Dive into the world of discovery and explore science through experiments. Spark your curiosity and have fun uncovering the wonders of science!

Outcomes: 2, 4, 5

Tuesday  
13 January

Incursion

#### All About Fire Fighting



Discover how firefighters stay safe, use their equipment, and tackle fires. Have fun, ask questions, and become a hero for the day.

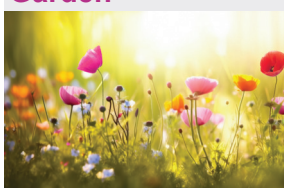
Start: 1:00pm  
Finish: 2:00pm

Outcomes: 2, 3, 4, 5

Wednesday  
14 January

In-House

#### Adventure To The Garden



Grab your explorer hat and see what amazing plants and creatures you can find! Discover their secrets, learn where they come from, and have a fun-filled nature adventure!

Outcomes: 2, 3, 4, 5

Thursday  
15 January

Excursion

#### Kaboom Bowling



Join us for an action-packed bowling session, then unleash your creativity with paper cup crafts to design your very own yarn baskets.

Depart: 10:00am  
Return: 12:00pm  
Transport: Private Bus

Outcomes: 3, 4, 5

Friday  
16 January

In-House

#### Disco With DJ-Kid -Chella



Let the rhythm take over, show off your best moves, and compete for fun prizes. Dance, laugh, and shine on the floor in this thrilling dance challenge!

Outcomes: 2, 3, 5



Book your session via the Xplor Home App

Visit [sa.ymca.org.au/OSHC](https://sa.ymca.org.au/OSHC) for more information

McDonald Park OSHC  
50-55 North Terrace, Mt Gambier, SA, 5290  
Christine Uwamahora  
0428 401 962

OSHC Support Team  
P 08 8200 2516  
E [oshc@ymcasa.org.au](mailto:oshc@ymcasa.org.au)  
f/YMCA SA OSHC



# OUT OF SCHOOL HOURS CARE

## Vacation Care | 15 Dec–23 Jan

IN-HOUSE	FULL FEE	\$67.80	CCS REDUCED FEE*	\$9.75 - \$35.75
	FULL FEE	\$88.70	CCS REDUCED FEE*	\$12.75 - \$46.75

\*Estimation of fees after subsidy is applied

### WEEK 4

**Monday**  
19 January

Excursion

#### Reidy Park For Laser Tag



Gear up for laser tag fun! Play, strategize, and take on exciting challenges with your friends.

Depart: 11:00am  
Return: 1:00pm  
Transport: Private Bus  
Outcomes: 3, 4, 5

**Tuesday**  
20 January

In-House

#### Face Paint



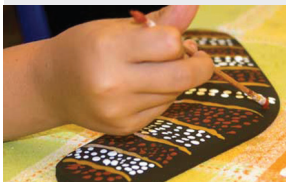
Choose your favourite designs and let our artists transform your face with fun, colourful creations. Spark your imagination and become a character, animal, or superhero for the day.

Outcomes: 1, 3, 4, 5

**Wednesday**  
21 January

In-House

#### Indigenous Story



Experience the beauty of traditional Indigenous music and rhythms, then create your own Indigenous inspired artwork. Connect, explore, and bring the stories and traditions of Indigenous culture to life.

Outcomes: 1, 3, 5

**Thursday**  
22 January

In-House

#### Art And Craft



Use colourful yarn to make adorable dogs, beautiful birds, and so much more. Let your imagination run wild as you twist, wrap, and design your own fluffy creations.

Outcomes: 3, 4, 5

**Friday**  
23 January

In-House

#### PJ Day



Join your OSHC friends in your favourite PJs for a cozy fun-filled day enjoying games, movies and crafts.

Outcomes: 2, 3, 4, 5



Book your session via the Xplor Home App  
Visit [sa.ymca.org.au/OSHC](https://sa.ymca.org.au/OSHC) for more information

McDonald Park OSHC  
50-55 North Terrace, Mt Gambier, SA, 5290  
Christine Uwamahora  
0428 401 962

OSHC Support Team  
P 08 8200 2516  
E [oshc@ymcasa.org.au](mailto:oshc@ymcasa.org.au)  
f /YMCA SA OSHC



# OUT OF SCHOOL HOURS CARE

## McDonald Park OSHC

### Important information

#### What is included

Breakfast and afternoon tea will be provided. Programmed activities including excursions, incursions and in-house activities.

#### What to bring

YMCA OSHC promotes a healthy eating environment and encourages families to provide their children with a healthy assortment of food to bring for recess, and lunch. As well as healthy brain food and a water bottle every day.

#### Fees and cancellations

All bookings must be received by Monday 1 December to avoid a \$3 casual fee. Cancellations must be made two weeks prior to the date of the requested care to avoid payment. By making a booking you are agreeing to pay the fees through your direct debit account in addition to normal OSHC bookings. Please review our terms and conditions online for our fee and policy information.

#### Excursions

Please make sure you arrive at the service at least 30 minutes before the bus departure. Please make sure you sign the Excursion Authorisation when you sign your children into OSHC for that day. While bus drivers in SA are exempt from ensuring passengers under 16 years are restrained. YMCA will make every effort to ensure the safety of all children by using seatbelts that are supplied and be guided by our policies and transport risk assessments.

#### Sun Smart Policy

Sun Smart guidelines are followed so please ensure children are in appropriate clothing and no singlets or thongs. Sunscreen is provided but if your child is sensitive to sunscreen, please bring your own.

#### Things to remember

Please note that we are a nut-aware service and ask that you do not bring food that contain nut products. Handheld electronics and smart watches are not permitted at the centre. We welcome feedback and suggestions at any time, please see your centre staff. Programmed activities are subject to change.

#### Operational hours

OSHC will be open from 6:30am - 6:00pm, please sign in and out between these times.

#### Daily fees

In-house: \$67.80

\*CCS Reduced fee: \$9.75 - \$35.75

Excursion and Incursion: \$88.70

\*CCS Reduced fee: \$12.75 - \$46.75

\*Estimation of fees after subsidy is applied

#### Learning outcomes:



##### OUTCOME 1

Children and young people have a strong sense of identity



##### OUTCOME 2

Children and young people are connected and contribute to their world



##### OUTCOME 3

Children and young people have a strong sense of wellbeing



##### OUTCOME 4

Children and young people are confident and involved learners



##### OUTCOME 5

Children and young people are effective communicators



Book your session via the Xplor Home App

Visit [sa.ymca.org.au/OSHC](http://sa.ymca.org.au/OSHC) for more information