






OUT OF SCHOOL HOURS CARE

Please see our website for fee information

Vacation Care | 18 Dec–19 Jan



WEEK 1

Monday 18 December	Tuesday 19 December	Wednesday 20 December	Thursday 21 December	Friday 22 December
In-House Ninja Warrior Challenge	In-House Roar	Excursion Inflatable World	In-House Festive Cooking	In-House Christmas Party
				
Race against the time with our own ninja warrior course. Make play dough and slime.	Follow the footprints through the jungle to discover the dinosaurs hidden in the yards. Have a look through the sensory trays to find some interesting fossils.	Inflatable World Depart: 9:30am Return: 12:30pm Transport: Private Bus In-house option: Cooking, crafts, and sensory play.	Cook up a storm in the kitchen making some Christmas biscuits and gingerbread. Let's also watch some Christmas movies.	Party with your friends to Christmas carols and enjoy a shared lunch. Create a gift and card to take home.
Outcomes: 1, 2, 5	Outcomes: 3, 4, 5	Outcomes: 1, 2, 3, 4, 5	Outcomes: 1, 2, 4, 5	Outcomes: 2, 3, 4, 5

Monday
25 December



Friday
5 January



Book your session via the Xplor Home App

Visit sa.ymca.org.au/OSHC for more information



Modbury Special School OSHC
9 Dampier Ave, Hope Valley SA 5090
Belinda Hill
0499 868 003

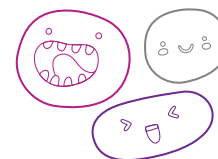
OSHC Support Team
P 08 8200 2516
E oshc@ymcasa.org.au
f /YMCA SA OSHC



OUT OF SCHOOL HOURS CARE

Please see our website for fee information

Vacation Care | 18 Dec–19 Jan



WEEK 2

Monday
8 January

In-House
Make a Splash



Get messy with a range of sensory experiences. Water, bubbles and much more.

Make sure you bring spare clothes.

Outcomes: 1, 2, 5

Tuesday
9 January

Incursion
Move It!



Sensory fun coming to us. Please bring old clothes and a change of clothes.

Start: 10:30am

Group games and parachute fun.

Outcomes: 4, 5

Wednesday
10 January

Incursion
Peddle Karts



Peddle Karts are coming to us.

Zoom through the gym using the peddle karts.

Cooking cupcakes.

Outcomes: 2, 4, 5

Thursday
11 January

In-House
Disney Day



All things Disney with a visit from Minnie Mouse. Sing along to our favourite Disney songs.

Work together to make a group collaborative masterpiece.

Outcomes: 2, 4, 5

Friday
12 January

Incursion
Live Drum Show



Enjoy an African drum show exploring the African culture through music and dance.

Start: 1:00pm

Have a go at making our own drums.

Outcomes: 1, 2, 3, 4, 5

WEEK 3

Monday
15 January

In-House
Community Helpers



Learn about different helpers in our community.

Dress ups and stories.

Design your own sun hat as we do some sun smart activities.

Outcomes: 1, 2, 3, 4, 5

Tuesday
16 January

Excursion
Wish



Movies at Semaphore Depart: 11:00am Return: 3:30pm Transport: Private Bus. Chips and drink included.

In-house option: Sensory play and cooking.

Outcomes: 1, 2, 5

Wednesday
17 January

In-House
Nature Day



Get messy with natural materials, mud, sand, and water. Make bird feeders for our garden.

Help to decorate garden stones to hide around the school.

Outcomes: 1, 3, 4, 5

Thursday
18 January

In-House
Tie Dye Fun



Make a tie dye t-shirt or socks to take home. Explore colours with different art activities. Enjoy some books, puzzles, and games.

Outcomes: 2, 3, 4, 5

Friday
19 January

Incursion
Sports Day



Challenge your friends to a running race, egg and spoon race and lots more.

Jumping castle will be available today.

Outcomes: 1, 2, 3, 5

Modbury Special School OSHC
9 Dampier Ave, Hope Valley SA 5090
Belinda Hill
0499 868 003

OSHC Support Team
P 08 8200 2516
E oshc@ymcasa.org.au
f /YMCA SA OSHC

the

OUT OF SCHOOL HOURS CARE

Modbury Special School OSHC



Important information:

- OSHC will be open from 8:00am – 6:00pm, please sign in and out between these times.
- Cancellations must be made two weeks prior to the date of requested care to avoid payment.
- Please send children in appropriate clothes for the activity they will be participating in.
- Sun Smart guidelines are followed so please ensure a hat is worn and no singlets.
- Sunscreen is provided. If your child is sensitive to sunscreen, please provide your own.
- Please review our terms and conditions online for our fee and policy information.
- Please provide morning tea, lunch and a drink bottle every day unless stated otherwise.
- Please note that we are a NUT-aware centre.
- Afternoon tea will be provided.
- Handheld electronic devices are not permitted at the centre unless specified in the day's description, communication devices are allowed.
- We welcome feedback and suggestions at any time, please see your centre staff
- By making a booking you are agreeing to pay the fees through your direct debit account in addition to normal OSHC bookings
- Please inform the service if your child suffers from travel sickness.
- Programmed activities are subject to change.

*Typical fee after subsidy is applied

While bus drivers (in SA) are exempt from ensuring passengers under 16Y are restrained, YMCA OSHC will make every effort to ensure the safety of all children by using seat belts that are supplied and be guided by our policies and transport risk assessment.

Learning outcomes:



OUTCOME 1

Children have a strong sense of identity



OUTCOME 2

Children are connected & contribute to their world



OUTCOME 3

Children have a strong sense of wellbeing



OUTCOME 4

Children are confident and involved learners



OUTCOME 5

Children are effective communicators



Book your session via the Xplor Home App

Visit sa.ymca.org.au/OSHC for more information