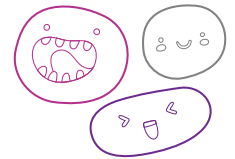







OUT OF SCHOOL HOURS CARE






Vacation Care | 15 - 26 April



WEEK 1

Monday 15 April	Tuesday 16 April	Wednesday 17 April	Thursday 18 April	Friday 19 April
In-House Friendship Day	In-House All Things That Fly	Incursion Get Messy	In-House Wheels Day	Incursion Disco Fever
				
Welcome to vacation care, come and enjoy a shared morning tea and teddy bear picnic. Create a friendship tree and bracelets to take home.	Is it a bird? Is it a plane? No, it's Superman! Explore all things that fly and try making a rocket. Slime making as well.	Get messy with Move It incursion fun. Please wear old clothes and bring a change of clothes. Construction play.	Bring your bike or scooter. Helmets must be worn. Road safety activities. Community helpers. Role play and dress ups.	Bop till we drop disco starting at 1:00pm Dance and sing with our friends. Cooking mini pizzas.
Outcomes: 1, 2, 4, 5	Outcomes: 1, 2, 3	Outcomes: 1, 2, 3, 4	Outcomes: 1, 2, 4, 5	Outcomes: 2, 3, 4, 5

WEEK 2

Monday 22 April	Tuesday 23 April	Wednesday 24 April	Thursday 25 April	Friday 26 April
Excursion We Rock the Spectrum	In-House Cooking Up a Storm	Excursion The Lion King Jr.		In-House Jumping Fun
				
Limited spaces Depart: 11:30am Return: 3:30pm Transport: Private Bus In-house option: Sensory play and cooking.	Cook up a storm in the kitchen. Decorate your own apron and drink bottle to take home.	Enjoy the live show at The Parks Theatre. Depart: 12:00pm Return: 3:30pm Transport: Private Bus In-house option: Sensory play and cooking fun.		Jumping castle and obstacle course in the gym. Playground fun, bikes, chalk, and bubbles.
Outcomes: 1, 2, 5	Outcomes: 1, 3, 4, 5	Outcomes: 1, 2, 3, 4, 5		Outcomes: 1, 2, 3, 4, 5

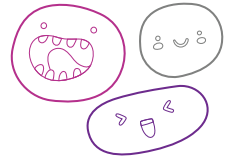
Modbury Special School OSHC
9 Dampier Ave, Hope Valley SA 5090
Belinda Hill
0499 868 003

OSHC Support Team
P 08 8200 2516
E oshc@ymcasa.org.au
f /YMCA SA OSHC



OUT OF SCHOOL HOURS CARE

Modbury Special School OSHC



Important information:

- OSHC will be open from 8:00am – 6:00pm, please sign in and out between these times.
- All bookings must be received by Monday 1 April to avoid a \$3 casual fee.
- Cancellations must be made two weeks prior to the date of requested care to avoid payment.
- Please send children in appropriate clothes for the activity they will be participating in.
- Sun Smart guidelines are followed so please ensure a hat is worn and no singlets.
- Sunscreen is provided. If your child is sensitive to sunscreen, please provide your own.
- Please review our terms and conditions online for our fee and policy information.
- Please provide morning tea, lunch and a drink bottle every day unless stated otherwise.
- Please note that we are a NUT-aware centre.
- Afternoon tea will be provided.
- Handheld electronic devices are not permitted at the centre unless specified in the day's description, communication devices are allowed.
- We welcome feedback and suggestions at any time, please see your centre staff
- By making a booking you are agreeing to pay the fees through your direct debit account in addition to normal OSHC bookings
- Please inform the service if your child suffers from travel sickness.
- Programmed activities are subject to change.

*Typical fee after subsidy is applied

While bus drivers (in SA) are exempt from ensuring passengers under 16Y are restrained, YMCA OSHC will make every effort to ensure the safety of all children by using seat belts that are supplied and be guided by our policies and transport risk assessment.

Learning outcomes:



OUTCOME 1

Children and young people have a strong sense of identity



OUTCOME 2

Children and young people are connected & contribute to their world



OUTCOME 3

Children and young people have a strong sense of wellbeing



OUTCOME 4

Children and young people are confident and involved learners



OUTCOME 5

Children and young people are effective communicators



Book your session via the Xplor Home App

Visit sa.ymca.org.au/OSHC for more information