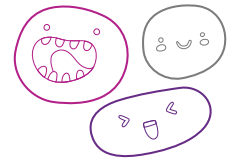


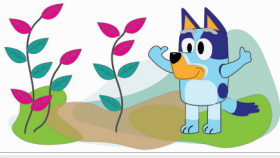




# OUT OF SCHOOL HOURS CARE

## Vacation Care | 15 - 26 April





IN-HOUSE	FULL FEE	\$64.00	CCS REDUCED FEE*	\$9.60-35.20
	EXCURSION / INCURSION	FULL FEE	\$84.00	CCS REDUCED FEE*



### WEEK 1

Monday 15 April	Tuesday 16 April	Wednesday 17 April	Thursday 18 April	Friday 19 April
In-House <b>Bluey Day</b>	In-House <b>Tropical Tuesday</b>	In-House <b>Treasure Hunt Obstacle Course</b>	Excursion <b>Mickster The Trickster Show</b>	Incursion <b>Build A Stuffer Bear</b>
				
Today is all about Bluey! Different art and craft activities based on Bluey. Make Bluey cupcakes and Bluey milkshakes. Wackadoo!	Get ready for a day full of tropical fun!  Sand tray play, make smoothies, sand art, make a grass skirt, coconut painting, make a pine cone pineapple and limbo!	Find the treasure by following clues hidden around the school, then compete in our playground obstacle challenge.	Ride the bus to The Parks to see a cool live show, and then have lunch at the playground.  Depart: 8:30am Return: 3:30pm Transport: Private Bus	Make a cute and cuddly friend, give them a name, and take them home with you.
<b>Outcomes:</b> 3, 4, 5	<b>Outcomes:</b> 3, 4, 5	<b>Outcomes:</b> 2, 3, 4, 5	<b>Outcomes:</b> 3, 4, 5	<b>Outcomes:</b> 1, 3, 4, 5

### WEEK 2

Monday 22 April	Tuesday 23 April	Wednesday 24 April	Thursday 25 April	Friday 26 April
In-House <b>Creative Activities Day</b>	Excursion <b>Apple Picking at Lenswood</b>	In-House <b>Wheels Day and Movie Marathon</b>	<b>PUBLIC HOLIDAY</b>  <b>CLOSED</b>	Excursion <b>Warrawong Wildlife Park</b>
				
Make a sensory jar, kaleidoscope, scratch art projector lamp and try sticker mosaics. Lots of things to make and do.	Pick your own apples and enjoy outdoor activities. Picnic style lunch and play at the park.  Depart: 8:30am Return: 3:30pm Transport: Private Bus	Bring your bike, scooter, skateboard, or rollerblades. Don't forget your helmets. In the afternoon we can settle in with a movie marathon with popcorn and a drink.		Get up and close with animals and nature.  Depart: 8:30am Return: 3:30pm Transport: Private Bus
<b>Outcomes:</b> 1, 3, 4, 5	<b>Outcomes:</b> 3, 4, 5	<b>Outcomes:</b> 3, 4, 5		<b>Outcomes:</b> 3, 4, 5

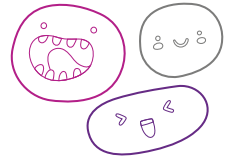
**St. Mark's Lutheran OSHC**  
37 Hampden Road, Mount Barker, 5251  
**Wayne Copley**  
0499 591 662

**OSHC Support Team**  
P 08 8200 2516  
E oshc@ymcasa.org.au  
f /YMCA SA OSHC



# OUT OF SCHOOL HOURS CARE

## St. Mark's Lutheran OSHC



### Important information:

- OSHC will be open from 6:30am – 6:15pm, please sign in and out between these times.
- All bookings must be received by Monday 1 April to avoid a \$3 casual fee.
- Cancellations must be made two weeks prior to the date of requested care to avoid payment.
- Please send children in appropriate clothes for the activity they will be participating in.
- Sun Smart guidelines are followed so please ensure a hat is worn and no singlets.
- Sunscreen is provided. If your child is sensitive to sunscreen, please provide your own.
- Please review our terms and conditions online for our fee and policy information.
- Please provide morning tea, lunch and a drink bottle every day unless stated otherwise.
- Please note that we are a NUT-aware centre.
- Breakfast and afternoon tea will be provided.
- Handheld electronic devices are not permitted at the centre unless specified in the day's description, communication devices are allowed.
- We welcome feedback and suggestions at any time, please see your centre staff
- By making a booking you are agreeing to pay the fees through your direct debit account in addition to normal OSHC bookings
- Please inform the service if your child suffers from travel sickness.
- Programmed activities are subject to change.

\*Typical fee after subsidy is applied

*While bus drivers (in SA) are exempt from ensuring passengers under 16Y are restrained, YMCA OSHC will make every effort to ensure the safety of all children by using seat belts that are supplied and be guided by our policies and transport risk assessment.*

### Learning outcomes:



#### OUTCOME 1

Children and young people have a strong sense of identity



#### OUTCOME 2

Children and young people are connected & contribute to their world



#### OUTCOME 3

Children and young people have a strong sense of wellbeing



#### OUTCOME 4

Children and young people are confident and involved learners



#### OUTCOME 5

Children and young people are effective communicators



Book your session via the Xplor Home App

Visit [sa.ymca.org.au/OSHC](http://sa.ymca.org.au/OSHC) for more information