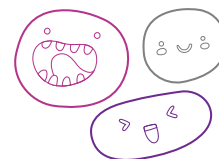


OUT OF SCHOOL HOURS CARE

Vacation Care | 3 Oct - 14 Oct

WEEKS 1 - 2

IN-HOUSE	FULL FEE	\$62.00	CCS REDUCED FEE*	\$11.94-32.55
	EXCURSION/ INCURSION	\$72.00	CCS REDUCED FEE*	\$13.86-37.80



Monday
3 October

LABOUR DAY
PUBLIC HOLIDAY
CLOSED

Tuesday
4 October

In-house
Science and STEM

We've turned OSHC into a science lab today! Try a variety of hands-on sizzling science experiments and team-building activities. Decorate your own pair of protective science goggles.

Outcomes: 1, 2, 3, 4, 5

Wednesday
5 October

In-house
Minute To Win It and challenges

Today is all about challenges, big and small! Compete against friends, educators, and the clock to finish all the challenges.

Are you ready?

Outcomes: 1, 2, 3, 4, 5

Thursday
6 October

Excursion
Lunch at Victoria Hotel

Enjoy a yummy lunch and play at the park. Lunch will be provided.

Depart: 10:30am
Return: 3:00pm
Transport: Private bus

Outcomes: 1, 2, 3

Friday
7 October

In-house
Are you ready to party?

Celebrate Loreena's one-year anniversary at Eastern Fleurieu! Let's party with balloons, cake, games and party bags. Come and join the fun!

Outcomes: 1, 2, 3, 4, 5

Monday
10 October

In-house
Photo Booth and Body Art Day

Create props, colour your hair and get some groovy body art. Head on over to the photo booth to take some selfies.

Outcomes: 1, 2, 3, 4

Tuesday
11 October

In-house
Disco dancing and karaoke

Make sure to bring your best dance moves and singing voice because today we will be dancing and using the karaoke microphone!

Outcomes: 1, 2, 4

Wednesday
12 October

Excursion
Mystery Bus Tour

Play Bus Bingo, collect surprises and drop off decorated stones for people to find all around Strath.

Depart: 9:30am
Return: 3:00pm
Transport: Mini bus

Outcomes: 1, 2, 3, 4, 5

Thursday
13 October

In-house
It's going to be a wheely fun day!

Bring your bike, scooter or roller blades. As long as it is pedal powered (no motor), and you have your own properly fitting helmet, then you're good to go!

Outcomes: 1, 2, 4

Friday
14 October

Excursion
OSHC Fun Day

We are visiting our friends at St Marks YMCA. Join in the fun with a day of inflatables, games and lots more. Please bring your lunch box.

Depart: 9:00am
Return: 3:00pm
Transport: Private bus

Outcomes: 1, 2, 3, 4, 5



Book your session via the Xplor Home App
Visit sa.ymca.org.au/OSHC for more information

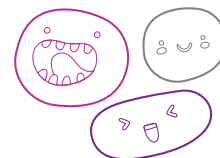
Eastern Fleurieu OSHC
34 East Street, Strathalbyn, SA 5255
Loreena Pollard
0421 562 838

OSHC Support Team
P 08 8200 2516
E oshc@ymcasa.org.au
f /YMCA SA OSHC



OUT OF SCHOOL HOURS CARE

Eastern Fleurieu OSHC



Important information:

- OSHC will be open from 6:30am – 6:30pm, please sign in and out between these times.
- All bookings must be received by Monday 26th September to avoid a \$3 casual fee.
- Cancellations must be made two weeks prior to the date of requested care to avoid payment.
- Please send children in appropriate clothes for the activity they will be participating in.
- Sun Smart guidelines are followed so please ensure a hat is worn and no singlets.
- Sunscreen is provided. If your child is sensitive to sunscreen, please provide your own.
- Please review our terms and conditions online for our fee and policy information.
- Please provide morning tea, lunch and a drink bottle every day unless stated otherwise.
- Please note that we are a NUT aware centre.
- Breakfast and afternoon tea will be provided.
- Handheld electronic devices are not permitted at the centre unless specified in the day's description, communication devices are allowed.
- We welcome feedback and suggestions at any time, please see your centre staff
- By making a booking you are agreeing to pay the fees through your direct debit account in addition to normal OSHC bookings
- Please inform the service if your child suffers from travel sickness.
- Programmed activities are subject to change.

*Typical fee after subsidy is applied

While bus drivers (in SA) are exempt from ensuring passengers under 16Y are restrained, YMCA OSHC will make every effort to ensure the safety of all children by using seat bts that are supplied and be guided by our policies and transport risk assessment.

Learning outcomes:



OUTCOME 1

Children have a strong sense of identity



OUTCOME 2

Children are connected & contribute to their world



OUTCOME 3

Children have a strong sense of wellbeing



OUTCOME 4

Children are confident and involved learners



OUTCOME 5

Children are effective communicators



Book your session via the Xplor Home App

Visit sa.ymca.org.au/OSHC for more information