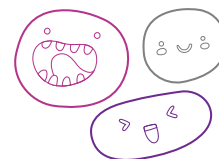


# OUT OF SCHOOL HOURS CARE

## Vacation Care | 3 Oct - 14 Oct

### WEEKS 1 - 2

IN-HOUSE EXCURSION/ INCURSION	FULL FEE	\$65.00	CCS REDUCED FEE*	\$12.51-34.13
	FULL FEE	\$75.00	CCS REDUCED FEE*	\$14.44-39.38



**Monday**  
3 October



**Tuesday**  
4 October

Excursion  
**Marshmallow Park**



Splash, climb and run at this fully fenced-in park in the Adelaide Park Lands.

Depart: 10:00am  
Return: 3:00pm  
Transport: Private bus

**Outcomes:** 3, 5

**Wednesday**  
5 October

In-house  
**Gardening Day**



Come and learn how to plant, grow and take care of plants.

Learn what it takes to become the best gardener.

**Outcomes:** 1, 2, 5

**Thursday**  
6 October

Excursion  
**Mystery Excursion!**



I wonder where the bus will take us? I wonder what we will see? Are you ready for a surprise trip?

Depart: 8:30am  
Return: 3:00pm  
Transport: Private bus

**Outcomes:** 2, 4, 5

**Friday**  
7 October

In-house  
**High Tea with cupcakes**



Join us for a master class in piping and decorating cupcakes.

Join us for a high tea afternoon party in the OSHC room.

**Outcomes:** 4, 5

**Monday**  
10 October

In-house  
**Insect hunting**



It's time to start looking under rocks, searching the garden and looking in trees for all the creepy crawlies you can find.

**Outcomes:** 2, 4

**Tuesday**  
11 October

In-house  
**CRAZY Hair Day**



Come in your best, tallest, most colourful, and craziest hair style!

**Outcomes:** 1, 3, 4

**Wednesday**  
12 October

Excursion  
**The Museum & Art Gallery**



Time to take a trip back in time to see all the mysteries of the past and see if we can be inspired by the art!

Depart: 9:00am  
Return: 3:00pm  
Transport: Private bus

**Outcomes:** 2, 4, 5

**Thursday**  
13 October

In-house  
**Story Creation**



Have you ever wanted to create your own story or comic book? Now is your chance!

**Outcomes:** 1, 4, 5

**Friday**  
14 October

Excursion  
**The Parks Theatre - Wizard of Oz**



It is our last day, so it is time to relax, lay back and watch some live theatre.

Depart: 9:00am  
Return: 12:30pm  
Transport: Private bus

**Outcomes:** 2, 4, 5



**Book your session via the Xplor Home App**

Visit [sa.ymca.org.au/OSHC](https://sa.ymca.org.au/OSHC) for more information

**One Tree Hill OSHC**  
Lot 6 McGilp Road, One Tree Hill, SA 5114  
**Juanita Pearce**  
0438 069 129

**OSHC Support Team**  
**P** 08 8200 2516  
**E** [oshc@ymcasa.org.au](mailto:oshc@ymcasa.org.au)  
**f** /YMCA SA OSHC



# OUT OF SCHOOL HOURS CARE

## One Tree Hill OSHC



### Important information:

- OSHC will be open from 6:30am – 6:15pm, please sign in and out between these times.
- All bookings must be received by Monday 26th September to avoid a \$3 casual fee.
- Cancellations must be made two weeks prior to the date of requested care to avoid payment.
- Please send children in appropriate clothes for the activity they will be participating in.
- Sun Smart guidelines are followed so please ensure a hat is worn and no singlets.
- Sunscreen is provided. If your child is sensitive to sunscreen, please provide your own.
- Please review our terms and conditions online for our fee and policy information.
- Please provide morning tea, lunch and a drink bottle every day unless stated otherwise.
- Please note that we are a NUT aware centre.
- Breakfast and afternoon tea will be provided.
- Handheld electronic devices are not permitted at the centre unless specified in the day's description, communication devices are allowed.
- We welcome feedback and suggestions at any time, please see your centre staff
- By making a booking you are agreeing to pay the fees through your direct debit account in addition to normal OSHC bookings
- Please inform the service if your child suffers from travel sickness.
- Programmed activities are subject to change.

\*Typical fee after subsidy is applied

*While bus drivers (in SA) are exempt from ensuring passengers under 16Y are restrained, YMCA OSHC will make every effort to ensure the safety of all children by using seat bts that are supplied and be guided by our policies and transport risk assessment.*

### Learning outcomes:



#### OUTCOME 1

Children have a strong sense of identity



#### OUTCOME 2

Children are connected & contribute to their world



#### OUTCOME 3

Children have a strong sense of wellbeing



#### OUTCOME 4

Children are confident and involved learners



#### OUTCOME 5

Children are effective communicators



Book your session via the Xplor Home App

Visit [sa.ymca.org.au/OSHC](https://sa.ymca.org.au/OSHC) for more information