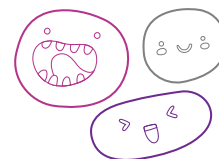


OUT OF SCHOOL HOURS CARE

Vacation Care | 3 Oct - 14 Oct

WEEKS 1 - 2

IN-HOUSE EXCURSION/ INCURSION	FULL FEE	\$65.00	CCS REDUCED FEE*	\$12.51-34.13
	FULL FEE	\$75.00	CCS REDUCED FEE*	\$14.44-39.38




Monday
3 October



Tuesday
4 October

In-house

Nerf Games



Help us build a Game Zone for our epic Nerf battles with lots of games including: capture the flag, sponge bombs, Nerf battles and rugby tag.

Outcomes: 1, 2, 3

Wednesday
5 October

Excursion

Belair National Park



Enjoy the day outside on the adventure playground, feed the ducks and go for a nature walk.

Depart: 9:00am
Return: 3:00pm
Transport: Private bus

Outcomes: 1, 2, 3, 4, 5

Thursday
6 October

Incursion

Squeaky Clean



Today we will be making our very own soap, bath bombs and lip balm to take home.

Keep them for yourself or give them to someone as a gift; the choice is yours.

Outcomes: 4, 5

Friday
7 October

In-house

Who Wants to be a Billionaire?



Come dressed up in your fancy clothes and enjoy the red-carpet experience. Make your own bling, shoot the loot game, compete in the Quiz Show and enjoy the silver service snacks.

Outcomes: 3, 4, 5

Monday
10 October

Incursion

POSHC Arcade



Arcade games are coming to POSHC! We'll also play skill games and tease your brain with puzzles and riddles.

Start: 10:00am

Outcomes: 1, 3, 4, 5

Tuesday
11 October

In-house

Minion Party




The cheeky Minions have stolen from us! Help us find our stuff. Come dressed up in blue and yellow. Make Minion masks and crafts and enjoy the party with some Minion party snacks.

Outcomes: 2, 3, 4

Wednesday
12 October

In-house

A Wheely Fun day!



Pass the riding test to get your license. Bring your wheels and helmets to decorate and join in on the wheel parade and timed races.

Outcomes: 1, 2, 3

Thursday
13 October

In-house

Lego Mania!



Paint with Lego, Lego craft and The Great Lego Challenge!


Enjoy some cooking as we make cupcakes, rice crispies and chocolate.

Outcomes: 2, 4, 5

Friday
14 October

Excursion

Cockle Train to Victor Harbor!



Walk to the Port Elliot Station, hop on the Cockle train to Victor and play mini golf. Lunch provided.

Depart: 9:45am
Return: 2:30pm
Transport: Walking and train

Outcomes: 1, 2, 3, 4, 5



Book your session via the Xplor Home App
Visit sa.ymca.org.au/OSHC for more information

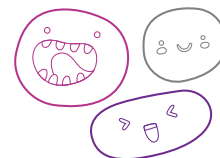
Port Elliot Primary OSHC
4 Cameron Street, Port Elliot, SA 5212
Caroline Keeler
0456 595 883

OSHC Support Team
P 08 8200 2516
E oshc@ymcasa.org.au
f /YMCA SA OSHC



OUT OF SCHOOL HOURS CARE

Port Elliot Primary OSHC



Important information:

- OSHC will be open from 6.30am – 6.30pm, please sign in and out between these times.
- All bookings must be received by Monday 26th September to avoid a \$3 casual fee.
- Cancellations must be made two weeks prior to the date of requested care to avoid payment.
- Please send children in appropriate clothes for the activity they will be participating in.
- Sun Smart guidelines are followed so please ensure a hat is worn and no singlets.
- Sunscreen is provided. If your child is sensitive to sunscreen, please provide your own.
- Please review our terms and conditions online for our fee and policy information.
- Please provide morning tea, lunch and a drink bottle every day unless stated otherwise.
- Please note that we are a NUT aware centre.
- Breakfast and afternoon tea will be provided.
- Handheld electronic devices are not permitted at the centre unless specified in the day's description, communication devices are allowed.
- We welcome feedback and suggestions at any time, please see your centre staff
- By making a booking you are agreeing to pay the fees through your direct debit account in addition to normal OSHC bookings
- Please inform the service if your child suffers from travel sickness.
- Programmed activities are subject to change.

*Typical fee after subsidy is applied

While bus drivers (in SA) are exempt from ensuring passengers under 16Y are restrained, YMCA OSHC will make every effort to ensure the safety of all children by using seat belts that are supplied and be guided by our policies and transport risk assessment.

Learning outcomes:



OUTCOME 1

Children have a strong sense of identity



OUTCOME 2

Children are connected & contribute to their world



OUTCOME 3

Children have a strong sense of wellbeing



OUTCOME 4

Children are confident and involved learners



OUTCOME 5

Children are effective communicators



Book your session via the Xplor Home App

Visit sa.ymca.org.au/OSHC for more information