

OUT OF SCHOOL HOURS CARE

Vacation Care | 29 Sept – 10 Oct

IN-HOUSE EXCURSION / INCURSION	FULL FEE	\$69.90	CCS REDUCED FEE*	\$10.05 - \$36.85
	FULL FEE	\$90.80	CCS REDUCED FEE*	\$13.05 - \$47.85

*Estimation of fees after subsidy is applied

WEEK 1

Monday
29 September

Incursion

Board and Giant Lawn Games



Enjoy giant lawn games, play classic card and board games, and get creative by designing your very own board game or card set!

Start: 9:00am
Finish: 3:00pm

Outcomes: 1, 3, 4

Tuesday
30 September

In-House

Mad Scientists



Create dazzling crystals, make your own lava lamps, and craft erupting volcano cups!

Outcomes: 1, 2, 3, 4, 5

Wednesday
1 October

Excursion

Healthy Kicks At West Adelaide FC



Celebrate 175 years of YMCA with AFL Max. Face 4 fun-filled quarters promoting healthy bodies, minds, food choices, and teamwork!
Depart: 8:30am
Return: 2:00pm
Transport: Private Bus

Outcomes: 1, 2, 3, 4, 5

Thursday
2 October

Excursion

Inflatable Zone



Get ready for some bouncy fun at Inflatable Zone!

Depart: 8:45am
Return: 1:30pm
Transport: Private Bus

Outcomes: 1, 2, 3

Friday
3 October

In-House

Superhero Day



Come dressed as your favourite Superhero. Design your own superhero masks, craft powerful cuffs, and create heroic pop stick characters!

Outcomes: 1, 3, 4

WEEK 2

Monday
6 October



Tuesday
7 October

In-House

Sensory Seekers



Tackle a thrilling obstacle course, get hands-on with cloud dough, and make your own stress balls!

Outcomes: 1, 3

Wednesday
8 October

Incursion

Build a Bear



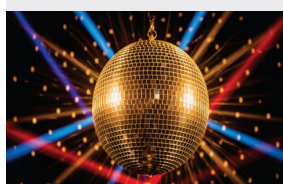
Make your own bear to take home. Give it a new name, dress it up and build a cozy little home using recycled materials.

Outcomes: 4, 5

Thursday
9 October

In-House

Disco Day



Dance, twist, and groove with musical statues, limbo, and Just Dance!

Outcomes: 1, 2, 3, 4, 5

Friday
10 October

Excursion

Movie Day



We are heading to the cinema to see Bad Guys 2, then bringing the movie magic to life with themed crafts!

Depart: 9:00am
Return: 1:00pm
Walking

Outcomes: 2, 3, 4, 5



Book your session via the Xplor Home App
Visit sa.ymca.org.au/OSHC for more information

St. Mark's Lutheran OSHC
37 Hampden Road, Mount Barker, 5251
Kylie Craig
0499 591 662

OSHC Support Team
P 08 8200 2516
E oshc@ymcasa.org.au
f /YMCA SA OSHC



OUT OF SCHOOL HOURS CARE

St Marks Lutheran OSHC

Important information

What is included

Breakfast and afternoon tea will be provided. Programmed activities including excursions, incursions and in-house activities.

What to bring

YMCA OSHC promotes a healthy eating environment and encourages families to provide their children with a healthy assortment of food to bring for recess, and lunch. As well as healthy brain food and a water bottle every day.

Fees and cancellations

All bookings must be received by Monday 15 September to avoid a \$3 casual fee. Cancellations must be made two weeks prior to the date of the requested care to avoid payment. By making a booking you are agreeing to pay the fees through your direct debit account in addition to normal OSHC bookings. Please review our terms and conditions online for our fee and policy information.

Excursions

Please make sure you arrive at the service at least 30 minutes before the bus departure. Please make sure you sign the Excursion Authorisation when you sign your children into OSHC for that day. While bus drivers in SA are exempt from ensuring passengers under 16 years are restrained. YMCA will make every effort to ensure the safety of all children by using seatbelts that are supplied and be guided by our policies and transport risk assessments.

Sun Smart Policy

Sun Smart guidelines are followed so please ensure children are in appropriate clothing and no singlets or thongs. Sunscreen is provided but if your child is sensitive to sunscreen, please bring your own.

Things to remember

Please note that we are a nut-aware service and ask that you do not bring food that contain nut products. Handheld electronics and smart watches are not permitted at the centre. We welcome feedback and suggestions at any time, please see your centre staff. Programmed activities are subject to change.

Operational hours

OSHC will be open from 6:30am - 6:15pm, please sign in and out between these times.

Daily fees

In-house: \$69.90

*CCS Reduced fee: \$10.05 - \$36.85

Excursion and Incursion: \$90.80

*CCS Reduced fee: \$13.05 - \$47.85

*Estimation of fees after subsidy is applied

Learning outcomes:



OUTCOME 1

Children and young people have a strong sense of identity



OUTCOME 2

Children and young people are connected and contribute to their world



OUTCOME 3

Children and young people have a strong sense of wellbeing



OUTCOME 4

Children and young people are confident and involved learners



OUTCOME 5

Children and young people are effective communicators



Book your session via the Xplor Home App

Visit sa.ymca.org.au/OSHC for more information