

# OUT OF SCHOOL HOURS CARE

## Vacation Care | 14 Dec–26 Jan

IN-HOUSE EXCURSION / INCURSION	FULL FEE	\$69.00	CCS REDUCED FEE*	\$10.35-37.95
	FULL FEE	\$89.00	CCS REDUCED FEE*	\$13.35-48.49



### WEEK 1

**Thursday**  
14 December

In-House

**Relaxation Day**



Come in your comfiest clothes for a day of relaxing and laziness.

**Outcomes:** 1, 3

**Friday**  
15 December

In-House

**Superhero Day**



Bring your imagination and spend the day becoming the superhero you were born to be!

**Outcomes:** 1, 3



**Book your session via the Xplor Home App**

Visit [sa.ymca.org.au/OSHC](http://sa.ymca.org.au/OSHC) for more information

### WEEK 2

**Monday**  
18 December

In-House

**Trip Around the World**



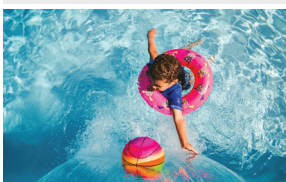
Join us for a trip around the world as we visit other countries, learn about other cultures, and explore the foods of the world.

**Outcomes:** 1, 2, 5

**Tuesday**  
19 December

Excursion

**Marion Outdoor Pool**



Please bring a rashie that covers shoulders, appropriate footwear, a towel, and a change of clothes.

Depart: 10:00am  
Return: 3:00pm  
Transport: Private Bus

**Outcomes:** 3, 5

**Wednesday**  
20 December

Incursion

**Animation**



Bring your creative skills to OSHC today as you are supported to make your own animation!

Start: 10:00am

**Outcomes:** 1, 4, 5

**Thursday**  
21 December

Excursion

**Laser Tag**



Come have a blast with us as we play and compete in arcade and laser tag games at Megazone Noarlunga.

Depart: 12:30pm  
Return: 3:30pm  
Transport: Private Bus

**Outcomes:** 1, 2, 3, 4, 5

**Friday**  
22 December

In-House

**It's Christmas Time**



We've got an exciting lineup of activities planned just for you.

Bring a small gift to participate in our OSHC Kris Kringle!

**Outcomes:** 1, 2, 5



**Our Saviour Lutheran OSHC**

28 Taylors Road West, Aberfoyle Park, SA 5159

**Natalie Bertram**

0417 154 435

**OSHC Support Team**

**P** 08 8200 2516

**E** [oshc@ymcasa.org.au](mailto:oshc@ymcasa.org.au)

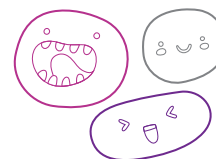
**f** /YMCA SA OSHC

the **Y**

# OUT OF SCHOOL HOURS CARE

## Vacation Care | 14 Dec–26 Jan

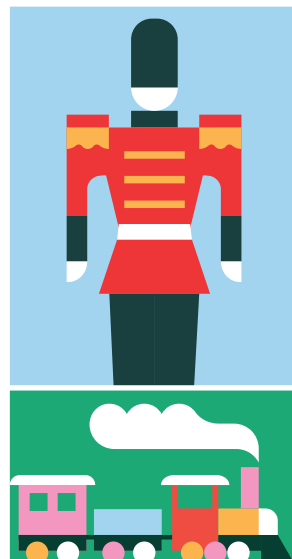
IN-HOUSE EXCURSION / INCURSION	FULL FEE	\$69.00	CCS REDUCED FEE*	\$10.35-37.95
	FULL FEE	\$89.00	CCS REDUCED FEE*	\$13.35-48.49



**Monday**  
25 December



**Friday**  
5 January



**Book your session via the Xplor Home App**

Visit [sa.ymca.org.au/OSHC](http://sa.ymca.org.au/OSHC) for more information

## WEEK 3

**Monday**  
8 January

**Tuesday**  
9 January

**Wednesday**  
10 January

**Thursday**  
11 January

**Friday**  
12 January

In-House

Excursion

Incursion

Excursion

In-House

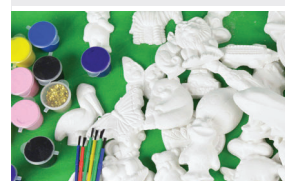
**Paint and Sip**

**Cinemas (Wonka)**

**Smoothie Bikes**

**Plaster Fun House**

**Talent Show**



Join us for a day of painting and making our very own milkshakes to enjoy as we create our artwork.

We are off to Wallis Cinema Mitcham. Please bring your recess, water bottle, and lunch with you.

Today, you will have the opportunity to create your own delicious smoothie. But to create your smoothie you will have to pedal fast!

Come with us as we head off to Plaster Fun House for a day of painting and creativity!

It's time to show everyone your best talent! Spend the day preparing an act to present in our OSHC talent show.

Depart: 11:15am  
Return: 2:30pm  
Transport: Private Bus

Start: 10:00am  
Finish: 12:00pm

Depart: 10:00am  
Return: 12:30pm  
Transport: Private Bus

**Outcomes:** 1, 3, 5

**Outcomes:** 1, 2, 3, 4, 5

**Outcomes:** 1, 2, 3, 4, 5

**Outcomes:** 1, 3, 5

**Outcomes:** 1, 3, 5

**Our Saviour Lutheran OSHC**

28 Taylors Road West, Aberfoyle Park, SA 5159

**Natalie Bertram**

0417 154 435

**OSHC Support Team**

**P** 08 8200 2516

**E** [oshc@ymcasa.org.au](mailto:oshc@ymcasa.org.au)

**f** /YMCA SA OSHC



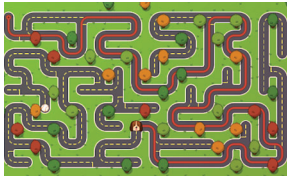




# OUT OF SCHOOL HOURS CARE

## Vacation Care | 14 Dec–26 Jan






IN-HOUSE EXCURSION/ INCURSION	FULL FEE	\$69.00	CCS REDUCED FEE*	\$10.35-37.95
	FULL FEE	\$89.00	CCS REDUCED FEE*	\$13.35-48.49



### WEEK 4

Monday 15 January	Tuesday 16 January	Wednesday 17 January	Thursday 18 January	Friday 19 January
In-House <b>Letter M Day</b>	Incursion <b>Mad Hatter's Picnic</b>	Incursion <b>Bricks 4 Kidz</b>	Excursion <b>Jubilee Adventure Playground</b>	In-House <b>Wheels Day</b>
				
From marshmallows, to marble mazes and movies, we will be exploring all things that start with the letter M.	It's a whimsical day where you can channel your inner Mad Hatter and enjoy a picnic! Dress up in quirky hats and get ready for a tea party like no other. Lunch: Mini Sandwiches and snacks.	Today we are joined by Bricks 4 Kidz for a day of building, construction, and more LEGO than you've ever seen before!	We are off to Jubilee Park Adventure Playground for a day of games, and picnics. Lunch: Sausage Sizzle  Depart: 10:00am Return: 1:00pm Transport: Private Bus	Bikes, scooters or roller blades, the choice is yours!  Bring your wheels for a fun filled day outside.  Don't forget your helmets!
<b>Outcomes:</b> 1, 2, 4, 5	<b>Outcomes:</b> 1, 4, 5	<b>Outcomes:</b> 1, 3, 5	<b>Outcomes:</b> 1, 2, 3, 4, 5	<b>Outcomes:</b> 1, 3, 5

### WEEK 5

Monday 22 January	Tuesday 23 January	Wednesday 24 January	Thursday 25 January	Friday 26 January
In-House <b>Bananas in PJs</b>	Excursion <b>Mini Golf</b>	Incursion <b>Master Chef Day</b>	In-House <b>Slip and Slide Splash Day</b>	<b>HAPPY AUSTRALIA DAY</b>
				
Come dressed in your pyjamas for a day of fun activities and watch us go bananas!	Today we are off to Hahndorf Mini Golf. Please bring your recess, water bottle, and lunch with you.  Depart: 10:00am Return: 2:00pm Transport: Private Bus	Today you will have the opportunity to create your own menu. We will go and buy the ingredients together!  Depart: 11:00am Return: 12:30pm Transport: Walking	Time to slide into some watery fun!  Please wear a rashie that covers shoulders, wear appropriate footwear, bring a towel, and a change of clothes.	<b>CLOSED</b>
<b>Outcomes:</b> 1, 3	<b>Outcomes:</b> 1, 2, 3, 4, 5	<b>Outcomes:</b> 1, 2, 3, 4, 5	<b>Outcomes:</b> 3, 5	

**Our Saviour Lutheran OSHC**  
28 Taylors Road West, Aberfoyle Park, SA 5159  
**Natalie Bertram**  
0417 154 435

**OSHC Support Team**  
**P** 08 8200 2516  
**E** oshc@ymcasa.org.au  
**f** /YMCA SA OSHC



# OUT OF SCHOOL HOURS CARE

## Our Saviour Lutheran OSHC



### Important information:

- OSHC will be open from 7:00am – 6:00pm, please sign in and out between these times.
- All bookings must be received by Monday 4 December to avoid a \$3 casual fee.
- Cancellations must be made two weeks prior to the date of requested care to avoid payment.
- Please send children in appropriate clothes for the activity they will be participating in.
- Sun Smart guidelines are followed so please ensure a hat is worn and no singlets.
- Sunscreen is provided. If your child is sensitive to sunscreen, please provide your own.
- Please review our terms and conditions online for our fee and policy information.
- Please provide morning tea, lunch and a drink bottle every day unless stated otherwise.
- Please note that we are a NUT-aware centre.
- Breakfast and afternoon tea will be provided.
- Handheld electronic devices are not permitted at the centre unless specified in the day's description, communication devices are allowed.
- We welcome feedback and suggestions at any time, please see your centre staff
- By making a booking you are agreeing to pay the fees through your direct debit account in addition to normal OSHC bookings
- Please inform the service if your child suffers from travel sickness.
- Programmed activities are subject to change.

\*Typical fee after subsidy is applied

*While bus drivers (in SA) are exempt from ensuring passengers under 16Y are restrained, YMCA OSHC will make every effort to ensure the safety of all children by using seat belts that are supplied and be guided by our policies and transport risk assessment.*

### Learning outcomes:



#### OUTCOME 1

Children have a strong sense of identity



#### OUTCOME 2

Children are connected & contribute to their world



#### OUTCOME 3

Children have a strong sense of wellbeing



#### OUTCOME 4

Children are confident and involved learners



#### OUTCOME 5

Children are effective communicators



Book your session via the Xplor Home App

Visit [sa.ymca.org.au/OSHC](https://sa.ymca.org.au/OSHC) for more information