

# OUT OF SCHOOL HOURS CARE

## Vacation Care | 11 Dec–19 Dec

IN-HOUSE	FULL FEE	\$75.10	CCS REDUCED FEE*	\$10.80 - \$39.60
	EXCURSION / INCURSION	\$96.00	CCS REDUCED FEE*	\$13.80 - \$50.60

\*Estimation of fees after subsidy is applied

### WEEK 1

Thursday  
11 December

In-House  
**Trivia Day**

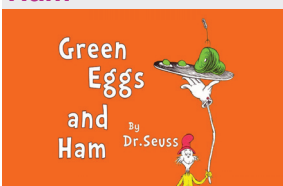


Think you know it all? Test your knowledge with a day full of trivia, puzzles, and brain-teasing games! Team up with friends, solve challenges, and enjoy a fun mix of learning, laughter, and friendly competition.

Outcomes: 1, 2, 3, 4, 5

Friday  
12 December

In-House  
**Green Eggs and Ham**



Inspired by Dr. Seuss, enjoy hands-on fun making wacky green eggs and ham and other silly snacks! A tasty mix of literacy, creativity, and cooking.

Outcomes: 1, 2, 4, 5

**CLOSED FROM 20 DECEMBER**



### WEEK 2

Monday  
15 December

Incursion  
**Colour Run**



Get ready to run, laugh, and get messy! Join our Colour Run with Bop Till You Drop for games, music, and a rainbow of colours. Wear white and bring a change of clothes.

11:00am - 12:30pm

Outcomes: 1, 2, 3, 4, 5

Tuesday  
16 December

In-House  
**Kick The Can Day**



Run, hide, and work together in the ultimate game of Kick the Can! Enjoy strategy, teamwork, and laughs with other fun group games and challenges.

Outcomes: 1, 2, 4, 5

Wednesday  
17 December

Excursion  
**Wallis Cinemas Noarlunga**



Get ready for a wild adventure at the movies! Today we're off to see the brand new Zootopia 2.

Depart: 8:30am  
Return: 1:15pm  
Transport: Private Bus

Outcomes: 1, 3, 5

Thursday  
18 December

In-House  
**Mad Scientist Day**

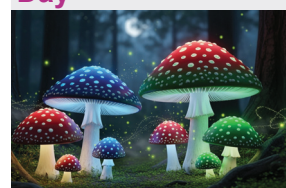


Put on your lab coat and goggles! Explore experiments, bubbling potions, and hands-on science fun in our Mad Science Lab.

Outcomes: 1, 3, 4, 5

Friday  
19 December

In-House  
**Magic Toadstools Day**



Say goodbye to OSHC with a magical day of fairies, forests, and enchanted crafts. Explore the toadstool village and make special keepsakes to remember your time with us.

Outcomes: 2, 4, 5



Book your session via the Xplor Home App  
Visit [sa.ymca.org.au/OSHC](https://sa.ymca.org.au/OSHC) for more information

Our Saviour Lutheran OSHC  
28 Taylors Road West, Aberfoyle Park, SA 5159  
Natalie Bertram  
0417 154 435

OSHC Support Team  
P 08 8200 2516  
E [oshc@ymcasa.org.au](mailto:oshc@ymcasa.org.au)  
f /YMCA SA OSHC



# OUT OF SCHOOL HOURS CARE

## Our Saviour Lutheran OSHC

### Important information

#### What is included

Breakfast and afternoon tea will be provided. Programmed activities including excursions, incursions and in-house activities.

#### What to bring

YMCA OSHC promotes a healthy eating environment and encourages families to provide their children with a healthy assortment of food to bring for recess, and lunch. As well as healthy brain food and a water bottle every day.

#### Fees and cancellations

All bookings must be received by Monday 23 June to avoid a \$3 casual fee. Cancellations must be made two weeks prior to the date of the requested care to avoid payment. By making a booking you are agreeing to pay the fees through your direct debit account in addition to normal OSHC bookings. Please review our terms and conditions online for our fee and policy information.

#### Excursions

Please make sure you arrive at the service at least 30 minutes before the bus departure. Please make sure you sign the Excursion Authorisation when you sign your children into OSHC for that day. While bus drivers in SA are exempt from ensuring passengers under 16 years are restrained. YMCA will make every effort to ensure the safety of all children by using seatbelts that are supplied and be guided by our policies and transport risk assessments.

#### Sun Smart Policy

Sun Smart guidelines are followed so please ensure children are in appropriate clothing and no singlets or thongs. Sunscreen is provided but if your child is sensitive to sunscreen, please bring your own.

#### Things to remember

Please note that we are a nut-aware service and ask that you do not bring food that contain nut products. Handheld electronics and smart watches are not permitted at the centre. We welcome feedback and suggestions at any time, please see your centre staff. Programmed activities are subject to change.

#### Operational hours

OSHC will be open from 7:00am - 6:00pm, please sign in and out between these times.

#### Daily fees

In-house: \$75.10

\*CCS Reduced fee: \$10.80 - \$39.60

Excursion and Incursion: \$96.00

\*CCS Reduced fee: \$13.80 - \$50.60

\*Estimation of fees after subsidy is applied

#### Learning outcomes:



##### OUTCOME 1

Children and young people have a strong sense of identity



##### OUTCOME 2

Children and young people are connected and contribute to their world



##### OUTCOME 3

Children and young people have a strong sense of wellbeing



##### OUTCOME 4

Children and young people are confident and involved learners



##### OUTCOME 5

Children and young people are effective communicators



Book your session via the Xplor Home App

Visit [sa.ymca.org.au/OSHC](http://sa.ymca.org.au/OSHC) for more information