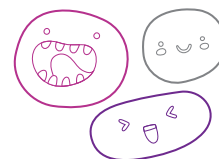







# OUT OF SCHOOL HOURS CARE

## Vacation Care | 18 Dec–26 Jan

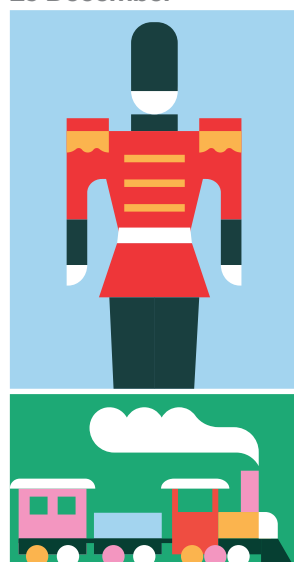
IN-HOUSE EXCURSION / INCURSION	FULL FEE	\$65.00	CCS REDUCED FEE*	\$9.75-35.75
	FULL FEE	\$85.00	CCS REDUCED FEE*	\$12.75-46.75



### WEEK 1

Monday 18 December	Tuesday 19 December	Wednesday 20 December	Thursday 21 December	Friday 22 December
In-House <b>Christmas Music</b>	Incursion <b>Christmas Mug and Craft</b>	Incursion <b>Laser Tag</b>	Excursion <b>Millicent Playground</b>	In-House <b>Sustainable Christmas Gifts</b>
				
Let's start this week strong and get into the Christmas spirit with Christmas karaoke and musical instruments.	Get ready for Christmas morning with a personalised Christmas mug, that you can decorate and receive a hot chocolate pack.	Burrungule Park Paintball and laser tag are coming to us! This is an exciting opportunity to be involved and try out laser tag on site. Start: 9:00am Finish: 12:00pm	Along with meeting the Millicent OSHC crew, a special guest awaits us for our Millicent Christmas party! Depart: 9:15am Return: 12:30pm Transport: Private Bus	We ask that a colouring in book be purchased, wrapped and named for your child. Please see out FB post for more details.
<b>Outcomes:</b> 1, 2, 3, 4, 5	<b>Outcomes:</b> 2, 4, 5	<b>Outcomes:</b> 2, 3, 4, 5	<b>Outcomes:</b> 1, 2, 3, 4, 5	<b>Outcomes:</b> 1, 2, 3, 4, 5

**Monday**  
25 December



**Friday**  
5 January



**Book your session via the Xplor Home App**

Visit [sa.ymca.org.au/OSHC](http://sa.ymca.org.au/OSHC) for more information



**Reidy Park OSHC**

30 O'Halloran Terrace, Mount Gambier, SA 5290

**Kelly Griffin**

0437 596 320

**OSHC Support Team**

**P** 08 8200 2516

**E** [oshc@ymcasa.org.au](mailto:oshc@ymcasa.org.au)

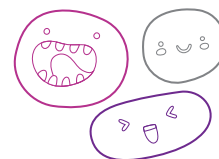
**f** /YMCA SA OSHC

the **Y**

# OUT OF SCHOOL HOURS CARE

## Vacation Care | 18 Dec–26 Jan

IN-HOUSE EXCURSION/ INCURSION	FULL FEE	\$65.00	CCS REDUCED FEE*	\$9.75-35.75
	FULL FEE	\$85.00	CCS REDUCED FEE*	\$12.75-46.75



### WEEK 2

**Monday**  
8 January

Incursion

**Blue Lake Cross Fit**



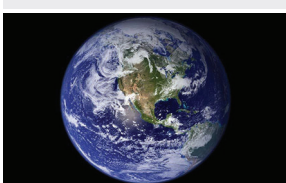
Are you ready to get fit? For the first time ever, we have the crew from Blue Lake Cross Fit coming in to run some fitness sessions with us.  
Start: 12:30pm  
Finish: 2:00pm

**Outcomes:** 1, 2, 3, 4, 5

**Tuesday**  
9 January

In-House

**Earth on a Plate**



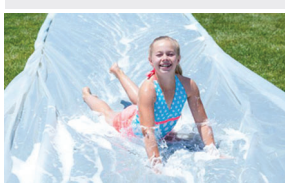
Children have asked for the mystery food taste test to return. This time we will step it up and ask the children to guess the origin of the food.

**Outcomes:** 1, 2, 3, 4, 5

**Wednesday**  
10 January

In-House

**Water Play Day**



Bring your bathers (sun safe) towel and thongs for a day under the sprinkler, playing water T-Ball and feet painting.

**Outcomes:** 2, 3, 4, 5

**Thursday**  
11 January

Excursion

**Movies**



Come join us as we go to the Oatmill Cinema!

Depart: 8:00am  
Return: 2:00pm  
Transport: Private Bus

**Outcomes:** 4, 5

**Friday**  
12 January

In-House

**OSHC Skip-a-thon**



Dress up in your brightest 80's outfit and comfy shoes to skip the day away.

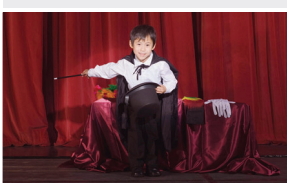
**Outcomes:** 1, 2, 3, 4, 5

### WEEK 3

**Monday**  
15 January

In-House

**Talent Day**



Have you got a talent that you are willing to share? Come preform for us; we can't wait to see it!

**Outcomes:** 3, 4, 5

**Tuesday**  
16 January

In-House

**Frisbee Games and Pizza Lunch**



Get creative and decorate your own frisbee to play with for the day. Return with them on Wednesday and you can play disc golf at the Valley Lakes.

**Outcomes:** 3, 4, 5

**Wednesday**  
17 January

Excursion

**Valley Lakes Playground**



Playground and Disc Golf at the Valley lakes.

Depart: 9:45am  
Return: 11:45am  
Transport: Private Bus

**Outcomes:** 3, 4, 5

**Thursday**  
18 January

In-House

**Wet and Wild**



Bring along your water pistols for a fun day of slip 'n' slides and sprinkler play.

Sun smart clothes, towel and thongs required.

**Outcomes:** 3, 4, 5

**Friday**  
19 January

In-House

**Wheels Day**



Pack your bikes, scooters, or skates for Wheels Day.

Helmets are required to ride.

**Outcomes:** 3, 4, 5

**Reidy Park OSHC**

30 O'Halloran Terrace, Mount Gambier, SA 5290

**Kelly Griffin**

0437 596 320

**OSHC Support Team**

**P** 08 8200 2516

**E** oshc@ymcasa.org.au

**f** /YMCA SA OSHC

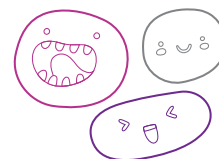
the **Y**

# OUT OF SCHOOL HOURS CARE

## Vacation Care | 18 Dec–26 Jan

### WEEK 4

IN-HOUSE	FULL FEE	\$65.00	CCS REDUCED FEE*	\$9.75-35.75
	FULL FEE	\$85.00	CCS REDUCED FEE*	\$12.75-46.75



**Monday**  
22 January

In-House

#### Mind and Body Games



Can you tap your head and rub your belly at the same time?

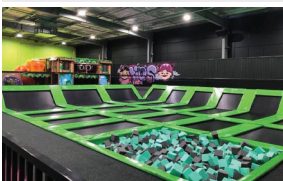
Let's challenge your mind and body to work together.

**Outcomes:** 1, 2, 3, 4, 5

**Tuesday**  
23 January

Excursion

#### Flip Out



Don't forget to pack your grip socks for a fun morning of climbing and jumping at Flip Out.

Depart: 9:15am  
Return: 12:00pm  
Transport: Private Bus

**Outcomes:** 3, 4, 5

**Wednesday**  
24 January

In-House

#### Construction and Deconstruction



Children have shown a large interest this term in constructing and deconstructing items. What will we find to build and pull apart?

**Outcomes:** 1, 2, 3, 4, 5

**Thursday**  
25 January

In-House

#### Tech and Movie Day



Bring your bean bags or pillows along for a relaxing day watching movies from our mobile cinema. You can even wear your PJs today. Technology may be bought along today - No Wi-Fi available.

**Outcomes:** 4, 5

**Friday**  
26 January

**HAPPY AUSTRALIA DAY**



**CLOSED**



Book your session via the Xplor Home App

Visit [sa.ymca.org.au/OSHC](https://sa.ymca.org.au/OSHC) for more information

**Reidy Park OSHC**

30 O'Halloran Terrace, Mount Gambier, SA 5290

**Kelly Griffin**

0437 596 320

**OSHC Support Team**

**P** 08 8200 2516

**E** [oshc@ymcasa.org.au](mailto:oshc@ymcasa.org.au)

**f** /YMCA SA OSHC

the **Y**

# OUT OF SCHOOL HOURS CARE

## Reidy Park OSHC



### Important information:

- OSHC will be open from 6:30am – 6:00pm, please sign in and out between these times.
- All bookings must be received by Monday 4 December to avoid a \$3 casual fee.
- Cancellations must be made two weeks prior to the date of requested care to avoid payment.
- Please send children in appropriate clothes for the activity they will be participating in.
- Sun Smart guidelines are followed so please ensure a hat is worn and no singlets.
- Sunscreen is provided. If your child is sensitive to sunscreen, please provide your own.
- Please review our terms and conditions online for our fee and policy information.
- Please provide morning tea, lunch and a drink bottle every day unless stated otherwise.
- Please note that we are a NUT-aware centre.
- Breakfast and afternoon tea will be provided.
- Handheld electronic devices are not permitted at the centre unless specified in the day's description, communication devices are allowed.
- We welcome feedback and suggestions at any time, please see your centre staff
- By making a booking you are agreeing to pay the fees through your direct debit account in addition to normal OSHC bookings
- Please inform the service if your child suffers from travel sickness.
- Programmed activities are subject to change.

\*Typical fee after subsidy is applied

*While bus drivers (in SA) are exempt from ensuring passengers under 16Y are restrained, YMCA OSHC will make every effort to ensure the safety of all children by using seat belts that are supplied and be guided by our policies and transport risk assessment.*

### Learning outcomes:



#### OUTCOME 1

Children have a strong sense of identity



#### OUTCOME 2

Children are connected & contribute to their world



#### OUTCOME 3

Children have a strong sense of wellbeing



#### OUTCOME 4

Children are confident and involved learners



#### OUTCOME 5

Children are effective communicators



Book your session via the Xplor Home App

Visit [sa.ymca.org.au/OSHC](https://sa.ymca.org.au/OSHC) for more information