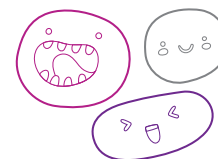


# OUT OF SCHOOL HOURS CARE

## Vacation Care | 14 Dec–26 Jan

IN-HOUSE	FULL FEE	\$67.00	CCS REDUCED FEE*	\$10.05-36.85
	EXCURSION / INCURSION	\$87.00	CCS REDUCED FEE*	\$13.05-47.85



### WEEK 1

**Thursday**  
14 December

In-House

**Moves and Grooves**



We'll bring the music and games, you bring the grooves! Dance along to your favourite music, play some musical chairs and statues, how groovy!

**Outcomes:** 1, 3, 4

**Friday**  
15 December

In-House

**Movie Day**



Relax, enjoy some popcorn, watch some movies, and play some challenges.

**Outcomes:** 1, 3, 5



**Book your session via the Xplor Home App**

Visit [sa.ymca.org.au/OSHC](http://sa.ymca.org.au/OSHC) for more information

### WEEK 2

**Monday**  
18 December

In-House

**Water Play**



Water squirters and balloons! Everyone is going to get wet so please bring some spare clothes and bathers!

**Outcomes:** 1, 3

**Tuesday**  
19 December

In-House

**Wheels Day**



Bring your wheels and ride the tracks of the school!

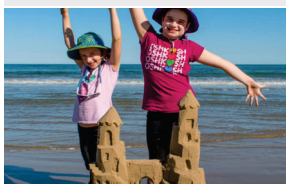
Remember no helmet or protective gear equals no riding.

**Outcomes:** 1, 3, 5

**Wednesday**  
20 December

Excursion

**Port Pirie Beach**



Meet up with Airdale OSHC at the beach, have a picnic, play on the playground, and make sandcastles.

No water play.  
Depart: 10:00am  
Return: 2:00pm  
Transport: Private Bus

**Outcomes:** 1, 2, 3

**Thursday**  
21 December

Incursion

**Stuffers**



Make our own cuddly friends! Stuffers will be available to stuff, name, give hearts to and create their birth certificate!

**Outcomes:** 1, 4, 5

**Friday**  
22 December

In-House

**Christmas Party**



With the OSHC break around the corner, let's all gather together to enjoy a nice feast for lunch and celebrate.

**Outcomes:** 2, 3



**St. Mark's College OSHC**  
Benedict Campus  
145 Wandearah Road, Port Pirie SA 5540  
**Les Jarrett**  
0499 844 061

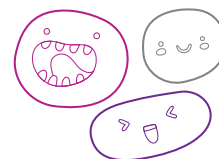
**OSHC Support Team**  
**P** 08 8200 2516  
**E** [oshc@ymcasa.org.au](mailto:oshc@ymcasa.org.au)  
**f** /YMCA SA OSHC

**the Y**

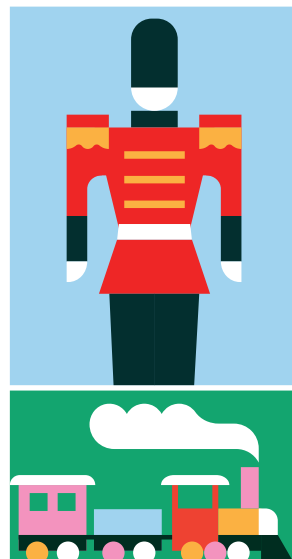
# OUT OF SCHOOL HOURS CARE

## Vacation Care | 14 Dec–26 Jan

IN-HOUSE EXCURSION / INCURSION	FULL FEE	\$67.00	CCS REDUCED FEE*	\$10.05-36.85
	FULL FEE	\$87.00	CCS REDUCED FEE*	\$13.05-47.85



**Monday**  
25 December



**Friday**  
5 January



**Book your session via the Xplor Home App**

Visit [sa.ymca.org.au/OSHC](http://sa.ymca.org.au/OSHC) for more information

## WEEK 3

**Monday**  
8 January

In-House

**Colour Run**



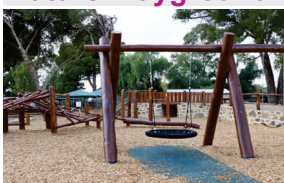
Bring along your white clothes for a colour run! Bring spare clothes just in case.

**Outcomes:** 2, 4, 5

**Tuesday**  
9 January

Excursion

**Woodward Park Nature Playground**



Woodward Park has had an upgrade; let's enjoy the new nature play. Please bring a packed lunch.

Depart: 10:00am  
Return: 2:00pm  
Transport: Private Bus

**Outcomes:** 1, 2, 3

**Wednesday**  
10 January

In-House

**Minute-To-Win-It**



Compete in games of skill and speed. You have only a minute to succeed.

**Outcomes:** 1, 4, 5

**Thursday**  
11 January

Incursion

**Gooroo Animation Claymation**



Create our own Claymation's! Gooroo will lead a workshop to help us along the way.

Starts: 10:00am

**Outcomes:** 1, 2, 4, 5

**Friday**  
12 January

In-House

**Technology Day**



Bring your devices to OSHC! Please make sure that the device does not require internet or have access to the internet and that only appropriate material is accessed.

**Outcomes:** 1, 2

**St. Mark's College OSHC**

Benedict Campus

145 Wandearah Road, Port Pirie SA 5540

**Les Jarrett**

0499 844 061

**OSHC Support Team**

**P** 08 8200 2516

**E** [oshc@ymcasa.org.au](mailto:oshc@ymcasa.org.au)

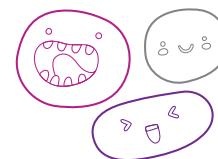
**f** /YMCA SA OSHC

**the**






# OUT OF SCHOOL HOURS CARE

## Vacation Care | 14 Dec–26 Jan






IN-HOUSE EXCURSION/ INCURSION	FULL FEE	\$67.00	CCS REDUCED FEE*	\$10.05-36.85
	FULL FEE	\$87.00	CCS REDUCED FEE*	\$13.05-47.85



### WEEK 4

Monday 15 January	Tuesday 16 January	Wednesday 17 January	Thursday 18 January	Friday 19 January
In-House <b>Clay Day</b>	Excursion <b>Little Beans Play Cafe</b>	In-House <b>Art Attack</b>	In-House <b>Italian Day</b>	Excursion <b>ActFas First Aid Visit</b>
				
Air dry and play clay creations. Get messy and become sculptors for a day!	Enjoy playing at Flinders Park and having a barbecue lunch. Lunch provided.  Depart: 9:30am Return: 1:30pm Transport: Private Bus	Painting and craft creations. Make beautiful creations to take home and put on display.	Pasta lunch, mini pizzas, cooking, and craft. Celebrate Italy today at OSHC.	ActFas First Aid will be putting on a workshop to help us learn about first aid and how we can all help each other.  Starts: 10:00am
<b>Outcomes:</b> 1, 2, 4	<b>Outcomes:</b> 1, 3, 5	<b>Outcomes:</b> 1, 4, 5	<b>Outcomes:</b> 2, 5	<b>Outcomes:</b> 1, 3, 4, 5

### WEEK 5

Monday 22 January	Tuesday 23 January	Wednesday 24 January	Thursday 25 January	Friday 26 January
In-House <b>Messy Play</b>	In-House <b>Slime and Sensory</b>	Excursion <b>Aquatic and Leisure Centre</b>	In-House <b>OSHC Party Day</b>	<b>HAPPY AUSTRALIA DAY</b>
				
Paint, foam, sand, explore our senses and create a time to remember.	Make slime, sensory jars and continue on a sensory journey.	Meet up with Airdale OSHC at the Port Pirie Aquatic Leisure Centre and have fun in the water!  Depart: 10:00am Return: 1:00pm Transport: Private Bus	Party games, party food, the new school year starts next week so let's have some fun.	<b>CLOSED</b>
<b>Outcomes:</b> 1, 2, 3	<b>Outcomes:</b> 1, 2, 3	<b>Outcomes:</b> 1, 3, 5	<b>Outcomes:</b> 1, 2	

**St. Mark's College OSHC**  
Benedict Campus  
145 Wandearah Road, Port Pirie SA 5540  
**Les Jarrett**  
0499 844 061

**OSHC Support Team**  
P 08 8200 2516  
E oshc@ymcasa.org.au  
f /YMCA SA OSHC



# OUT OF SCHOOL HOURS CARE

## St. Mark's College OSHC



### Important information:

- OSHC will be open from 6:30am – 6:00pm, please sign in and out between these times.
- All bookings must be received by Monday 4 December to avoid a \$3 casual fee.
- Cancellations must be made two weeks prior to the date of requested care to avoid payment.
- Please send children in appropriate clothes for the activity they will be participating in.
- Sun Smart guidelines are followed so please ensure a hat is worn and no singlets.
- Sunscreen is provided. If your child is sensitive to sunscreen, please provide your own.
- Please review our terms and conditions online for our fee and policy information.
- Please provide morning tea, lunch and a drink bottle every day unless stated otherwise.
- Please note that we are a NUT-aware centre.
- Breakfast and afternoon tea will be provided.
- Handheld electronic devices are not permitted at the centre unless specified in the day's description, communication devices are allowed.
- We welcome feedback and suggestions at any time, please see your centre staff
- By making a booking you are agreeing to pay the fees through your direct debit account in addition to normal OSHC bookings
- Please inform the service if your child suffers from travel sickness.
- Programmed activities are subject to change.

\*Typical fee after subsidy is applied

*While bus drivers (in SA) are exempt from ensuring passengers under 16Y are restrained, YMCA OSHC will make every effort to ensure the safety of all children by using seat belts that are supplied and be guided by our policies and transport risk assessment.*

### Learning outcomes:



#### OUTCOME 1

Children have a strong sense of identity



#### OUTCOME 2

Children are connected & contribute to their world



#### OUTCOME 3

Children have a strong sense of wellbeing



#### OUTCOME 4

Children are confident and involved learners



#### OUTCOME 5

Children are effective communicators



Book your session via the Xplor Home App

Visit [sa.ymca.org.au/OSHC](https://sa.ymca.org.au/OSHC) for more information