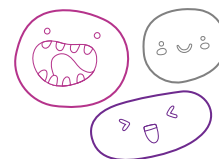


# OUT OF SCHOOL HOURS CARE

## Vacation Care | 18 Apr - 29 Apr

### WEEKS 1 - 2

IN-HOUSE EXCURSION/ INCURSION	FULL FEE	\$58	CCS REDUCED FEE*	\$11.30 - \$30.60
	FULL FEE	\$68	CCS REDUCED FEE*	\$13.20 - \$35.80



Monday 18 April	Tuesday 19 April	Wednesday 20 April	Thursday 21 April	Friday 22 April
	Outcomes:	Outcomes:	Outcomes:	Outcomes:
Monday 25 April	Tuesday 26 April	Wednesday 27 April	Thursday 28 April	Friday 29 April
	Outcomes:	Outcomes:	Outcomes:	Outcomes:



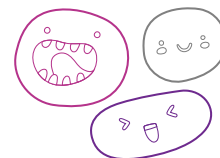
Book your session via the Xplor Home App  
Visit [sa.ymca.org.au/OSHC](https://sa.ymca.org.au/OSHC) for more information

**Westbourne Park Primary School OSHC**  
2 Marlborough Road, Westbourne Park SA 5041  
**Steve Clark - OSHC Service Director**  
P 0439 292 156

**OSHC Support Team**  
P 08 8200 2516  
E [oshc@ymcasa.org.au](mailto:oshc@ymcasa.org.au)  
f /YMCA SA OSHC



# OUT OF SCHOOL HOURS CARE



## Westbourne Park Primary School OSHC

### Important information:

- OSHC will be open from 7am – 6pm, please sign in and out between these times
- All bookings must be received by Monday 11th April to avoid a \$3 casual fee
- Cancellations must be made two weeks prior to the date of requested care to avoid payment
- Please send children in appropriate clothes for the activity they will be participating in
- Sun Smart guidelines are followed so please ensure a hat is worn and no singlets
- Sunscreen is provided. If your child is sensitive to sunscreen, please provide your own
- Please review our terms and conditions online for other fee and policy information
- Please provide morning tea, lunch and a drink bottle every day unless stated otherwise
- Breakfast and afternoon tea will be provided and we are a NUT aware centre
- Hand held electronic devices are not permitted at the centre unless specified in the days description, communication devices are allowed.
- We welcome feedback and suggestions at any time, please see your Centre staff
- By making a booking you are agreeing to pay the fees through your direct debit account in addition to normal OSHC bookings
- Please inform the service if your child suffers from travel sickness

\*Typical fee after subsidy is applied

*While bus drivers (in SA) are exempt from ensuring passengers under 16Y are restrained, YMCA OSHC will make every effort to ensure the safety of all children by using seat belts that are supplied and be guided by our policies and transport risk assessment.*

### Learning outcomes:



#### OUTCOME 1

Children have a strong sense of identity



#### OUTCOME 2

Children are connected & contribute to their world



#### OUTCOME 3

Children have a strong sense of wellbeing



#### OUTCOME 4

Children are confident and involved learners



#### OUTCOME 5

Children are effective communicators



Book your session via the Xplor Home App

Visit [sa.ymca.org.au/OSHC](http://sa.ymca.org.au/OSHC) for more information