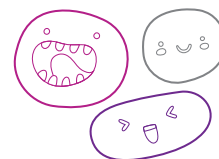







OUT OF SCHOOL HOURS CARE

Vacation Care | 18 Dec–26 Jan

IN-HOUSE EXCURSION/ INCURSION	FULL FEE	\$63.00	CCS REDUCED FEE*	\$9.45-34.65
	FULL FEE	\$83.00	CCS REDUCED FEE*	\$12.45-45.65



WEEK 1

Monday 18 December	Tuesday 19 December	Wednesday 20 December	Thursday 21 December	Friday 22 December
In-House Wheels Days	In-House Technology Day	Excursion Cinema - Wish	Excursion Salvos	Incursion Christmas Celebration
				
Bring your bikes, scooters, and other 'wheely' good transport along with safety equipment for a day full of challenges.	Get involved in a range of activities that focus on technology, such as coding, robotics, and digital art. You can bring your own tablet or technology devices today.	We're attending Mitcham Cinemas to watch a movie! Depart: 11:15am Return: 2:30pm Transport: Private Bus	As a tradition, we're off to the Salvos shop on Goodwood Road to buy a present for a family member. Bring \$5-\$20. Depart: 9:00am Return: 12:00pm Transport: Walking	Let's celebrate with a disco, pinata, snacks, and fun games all day. Lunch provided.
Outcomes: 1, 3	Outcomes: 1, 2, 3, 4, 5	Outcomes: 1, 2, 3, 4, 5	Outcomes: 1, 2, 3, 4, 5	Outcomes: 1, 2, 3, 4, 5

Monday
25 December



Friday
5 January



Book your session via the Xplor Home App

Visit sa.ymca.org.au/OSHC for more information



Westbourne Park OSHC

2 Marlborough Road, Westbourne Park, SA 5041

Liseth Saa

0439 292 156

OSHC Support Team

P 08 8200 2516

E oshc@ymcasa.org.au

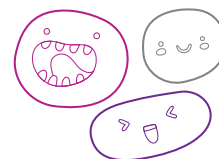
f /YMCA SA OSHC

the **Y**

OUT OF SCHOOL HOURS CARE

Vacation Care | 18 Dec–26 Jan

IN-HOUSE EXCURSION/ INCURSION	FULL FEE	\$63.00	CCS REDUCED FEE*	\$9.45-34.65
	FULL FEE	\$83.00	CCS REDUCED FEE*	\$12.45-45.65



WEEK 2

Monday
8 January

In-House

Construction and Deconstruction



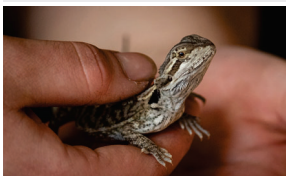
Today we'll build with different materials, as well as take apart old electrical appliances to see how they work.

Outcomes: 1, 3, 4

Tuesday
9 January

Incursion

Reptiles Day



Animal Relocation and Education will bring us some exotic and curious reptiles like snakes, lizards and more.

Starts: 10:00am

Outcomes: 1, 2, 3, 4, 5

Wednesday
10 January

In-House

OSHC Carnival



Games, educator performances, face painting as well as food and drinks to sell. All money donations will be given to the Save the Children Organisation. Bring some spare coins for spending.

Outcomes: 1, 2, 3, 4, 5

Thursday
11 January

Excursion

Plaster Fun House



We are heading to the Plaster Fun House Wayville.

Depart: 9:30am
Return: 12:30pm
Transport: Private Bus

Outcomes: 1, 2, 3, 4, 5

Friday
12 January

In-House

Water Battle Day



Come with your bathers, a towel, and a spare change of clothes as we run a series of games and activities based around water!

Outcomes: 1, 2, 3, 4, 5

WEEK 3

Monday
15 January

In-House

Mindful Monday



Dress in comfy PJs and relax at OSHC. We will have activities such as a hair salon, yoga, knitting, movies, and sensory play.

Outcomes: 1, 3

Tuesday
16 January

Excursion

Woodhouse



Crawl, climb, swing and splash around obstacles on an authentic Australian nature experience at Woodhouse Adventure Park. Depart: 9:00am Return: 3:30pm Transport: Private Bus

Outcomes: 1, 2, 3, 4, 5

Wednesday
17 January

In-House

Artistic Adventure



Exploring different art styles, experimenting with new techniques, or simply enjoying the process of creating.

Outcomes: 1, 4, 5

Thursday
18 January

Incursion

Tennis Clinic



Head Start Sports will be conducting a tennis clinic. Come learn some new skills.

Starts: 10:00am

Outcomes: 1, 2, 3, 4

Friday
19 January

Excursion

Playground Crawl



Visit Morialta Nature Playground and Thorndon Park for a day of nature and play!

Depart: 9:30am
Return: 3:00pm
Transport: Private Bus

Outcomes: 1, 2, 3, 4, 5

Westbourne Park OSHC

2 Marlborough Road, Westbourne Park, SA 5041

Liseth Saa

0439 292 156

OSHC Support Team

P 08 8200 2516

E oshc@ymcasa.org.au

f /YMCA SA OSHC



OUT OF SCHOOL HOURS CARE

Vacation Care | 18 Dec–26 Jan

WEEK 4

IN-HOUSE	FULL FEE	\$63.00	CCS REDUCED FEE*	\$9.45-34.65
	EXCURSION / INCURSION	\$83.00	CCS REDUCED FEE*	\$12.45-45.65



Monday
22 January

In-House

Minecraft Party



Every activity today will be based around Minecraft. You can bring your iPad today.

Outcomes: 1, 2, 4

Tuesday
23 January

Incursion

Circus Skills



Learn the circus skills of juggling, plate spinning and hula hoops!

Starts: 10:00am

Outcomes: 1, 2, 3, 4, 5

Wednesday
24 January

Excursion

Hahndorf Farm Barn



We are off to the German town to visit the farm barn and some sweet shops. Bring up to \$7 for spending.

Depart: 9:00am
Return: 3:00pm
Transport: Private Bus

Outcomes: 1, 2, 3, 4, 5

Thursday
25 January

In-House

Challenge Accepted



Be part of fun tasks or obstacles with determination and a positive attitude, and you will win different prizes.

Outcomes: 1, 2, 3, 4

Friday
26 January

HAPPY AUSTRALIA DAY



CLOSED



Book your session via the Xplor Home App

Visit sa.ymca.org.au/OSHC for more information

Westbourne Park OSHC

2 Marlborough Road, Westbourne Park, SA 5041

Liseth Saa

0439 292 156

OSHC Support Team

P 08 8200 2516

E oshc@ymcasa.org.au

f /YMCA SA OSHC



OUT OF SCHOOL HOURS CARE

Westbourne Park OSHC



Important information:

- OSHC will be open from 7:00am – 6:00pm, please sign in and out between these times.
- All bookings must be received by Monday 4 December to avoid a \$3 casual fee.
- Cancellations must be made two weeks prior to the date of requested care to avoid payment.
- Please send children in appropriate clothes for the activity they will be participating in.
- Sun Smart guidelines are followed so please ensure a hat is worn and no singlets.
- Sunscreen is provided. If your child is sensitive to sunscreen, please provide your own.
- Please review our terms and conditions online for our fee and policy information.
- Please provide morning tea, lunch and a drink bottle every day unless stated otherwise.
- Please note that we are a NUT-aware centre.
- Breakfast and afternoon tea will be provided.
- Handheld electronic devices are not permitted at the centre unless specified in the day's description, communication devices are allowed.
- We welcome feedback and suggestions at any time, please see your centre staff
- By making a booking you are agreeing to pay the fees through your direct debit account in addition to normal OSHC bookings
- Please inform the service if your child suffers from travel sickness.
- Programmed activities are subject to change.

*Typical fee after subsidy is applied

While bus drivers (in SA) are exempt from ensuring passengers under 16Y are restrained, YMCA OSHC will make every effort to ensure the safety of all children by using seat belts that are supplied and be guided by our policies and transport risk assessment.

Learning outcomes:



OUTCOME 1

Children have a strong sense of identity



OUTCOME 2

Children are connected & contribute to their world



OUTCOME 3

Children have a strong sense of wellbeing



OUTCOME 4

Children are confident and involved learners



OUTCOME 5

Children are effective communicators



Book your session via the Xplor Home App

Visit sa.ymca.org.au/OSHC for more information